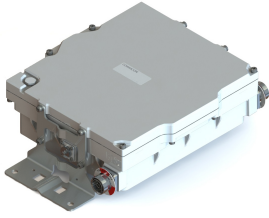


TMA7UC8-11V | E15R02P60



Single Compact TMA 700uC/850MHz, Diplexed BTS/ANT, Variable Gain and AISG

- Support DC/AISG antenna Auto-forward

OBSOLETE

Product Classification

Product Type 1-BTS:1-ANT (Uniplex) | Tower mounted amplifier

General Specifications

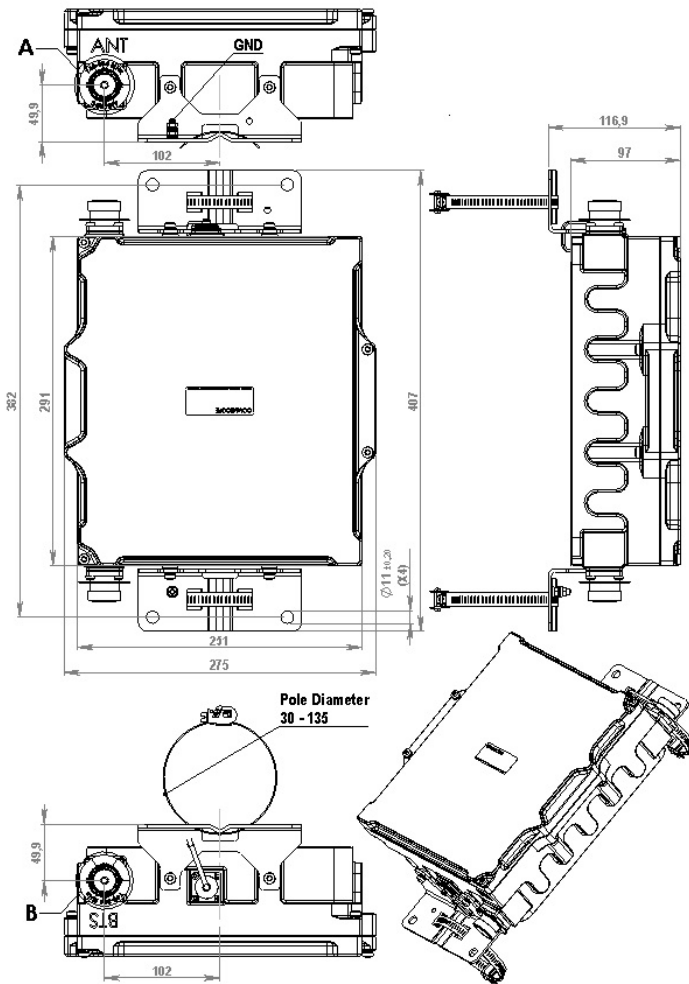
Color Gray
Modularity 1-Single
Mounting Pole | Wall
Mounting Pipe Hardware Band clamps (4)
RF Connector Interface 7-16 DIN Female
RF Connector Interface Body Style Long neck

Dimensions

Height 291 mm | 11.457 in
Width 275 mm | 10.827 in
Depth 93.6 mm | 3.685 in
Ground Screw Diameter 6 mm | 0.236 in
Mounting Pipe Diameter Range 40–160 mm

TMA7UC8-11V | E15R02P60

Outline Drawing



Electrical Specifications

License Band, LNA

CEL 850 | USA 750

Electrical Specifications, dc Power/Alarm

dc Switching/Redundancy

Yes

Lightning Surge Current

10 kA

Lightning Surge Current Waveform

8/20 waveform

Operating Current at Voltage

240 mA @ 12 V

Operating Current Tolerance

±20 mA

Voltage

7-30 Vdc

TMA7UC8-11V | E15R02P60

Voltage, CWA Mode	10–18 Vdc
Alarm Current, CWA Mode	30–170 mA @ 10–18 V

Electrical Specifications, AISG

AISG Carrier	2.176 MHz ± 100 ppm
AISG Connector	8-pin DIN Female
AISG Connector Standard	IEC 60130-9
Protocol	AISG 2.0
Voltage, AISG Mode	10–30 Vdc

Electrical Specifications

Sub-module	1	1
Branch	1	2
AISG 2.0 Device Subunit	E15R02P58 1	E15R02P58 2
License Band	USA 750, LNA	CEL 850, LNA
Return Loss, typical, dB	24	24
Return Loss at 8 dB, typical, dB	22	22
Return Loss at 4 dB, typical, dB	20	20
Return Loss - Bypass Mode, typical, dB	14	14

Electrical Specifications Rx (Uplink)

Frequency Range, MHz	777.5–787	824–849
Gain, nominal, dB	13	13
Gain Adjustment Range, dB	4-13	4-13
Gain Adjustment Range Increments, dB	1	1
Noise Figure, typical, dB	1.8	1.9
Noise Figure at 8 dB, typical, dB	2.1	2.4
Noise Figure at 4 dB, typical, dB	3.1	3.2
Group Delay Variation, maximum, ns	160	
Group Delay Variation Bandwidth, MHz	5	
Total Group Delay, maximum, ns		150
Insertion Loss - Bypass Mode, typical, dB	3.1	3.2

Electrical Specifications Tx (Downlink)

Frequency Range, MHz	746–756	869–894
-----------------------------	----------------	----------------

TMA7UC8-11V | E15R02P60

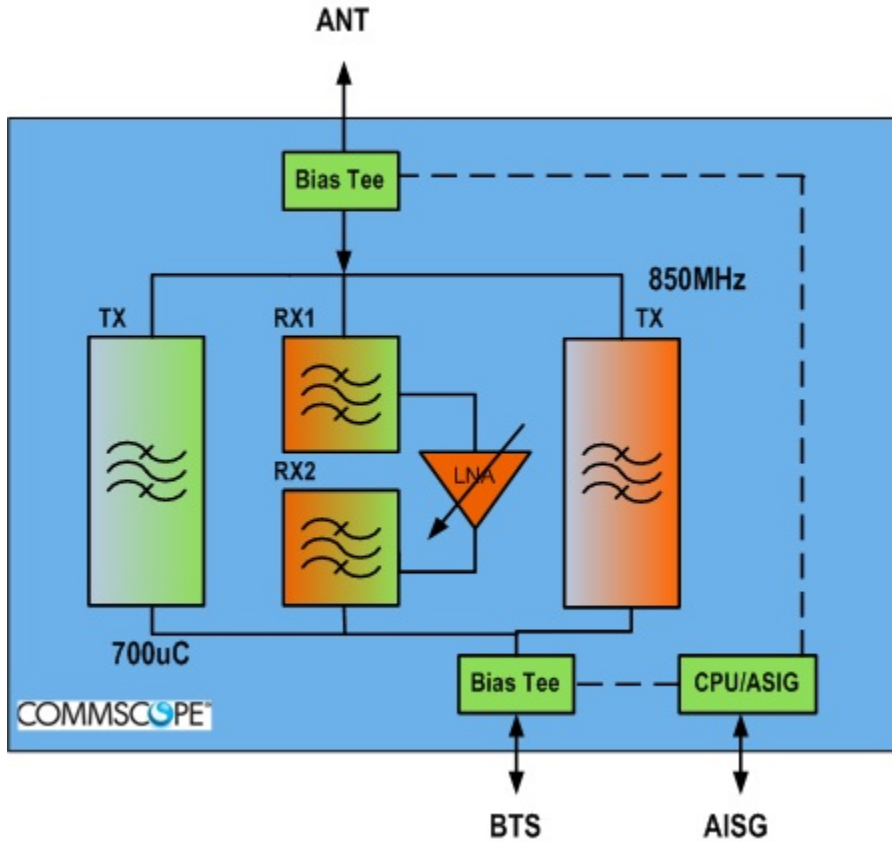
Insertion Loss, typical, dB	0.5	0.5
Return Loss, typical, dB	24	24
Input Power, RMS, maximum, W	200	500
Input Power, PEP, maximum, W	2000	5000
3rd Order PIM, minimum, dBc		-161
3rd Order PIM Test Method		2 x 20 W CW tones
7th Order PIM, minimum, dBc	-161	
7th Order PIM Test Method	2 x 20 W CW tones	

Electrical Specifications, Band Reject

Frequency Range, MHz	763-775	851-856
Attenuation, minimum, dB	27	20

TMA7UC8-11V | E15R02P60

Block Diagram



Material Specifications

Finish Painted

Environmental Specifications

Operating Temperature -40 °C to +65 °C (-40 °F to +149 °F)

Relative Humidity Up to 100%

Corrosion Test Method IEC 60068-2-11, 30 days

Ingress Protection Test Method IEC 60529:2001, IP67

Packaging and Weights

Included Mounting hardware

Weight, net 8 kg | 17.637 lb

* Footnotes

TMA7UC8-11V | E15R02P60

License Band, LNA

License Bands that have RxUplink amplification