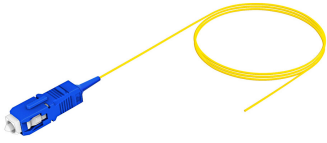


FAWSCUC01

Base Product



Low Loss Singlemode SC/UPC to Stub, Fiber Pigtail, Simplex 0.9mm, Unrated

Product Classification

Regional Availability	Asia Australia/New Zealand Europe Latin America Middle East /Africa North America
Portfolio	CommScope®
Product Type	Fiber pigtail, unjacketed
Product Series	FAW

General Specifications

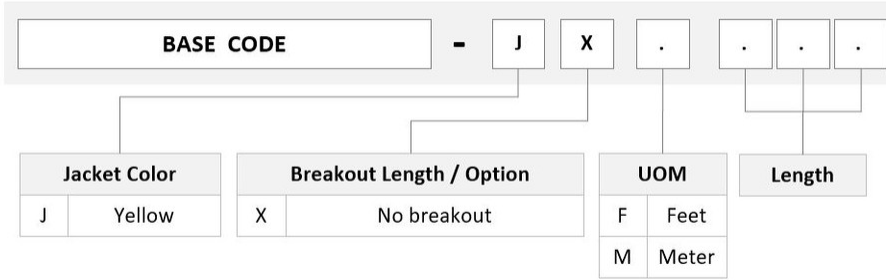
Connector A, quantity	1
Color, boot A	Blue
Color, connector A	Blue
Interface, Connector A	SC/UPC
Jacket Color	Yellow
Polarity	Method B Enhanced
Total Fibers, quantity	1

Dimensions

Cable Assembly Length Range (m)	1 – 20
Cable Assembly Length Range (ft)	1 – 66
Diameter Over Jacket	0.9 mm 0.035 in

Ordering Tree

FAWSCUC01



Optical Specifications

Fiber Mode	Singlemode
Fiber Type	G.657.A2, TeraSPEED®
Insertion Loss, maximum, connector A	0.25 dB
Return Loss, minimum, connector A	50 dB

Environmental Specifications

Environmental Space	Unrated
----------------------------	---------

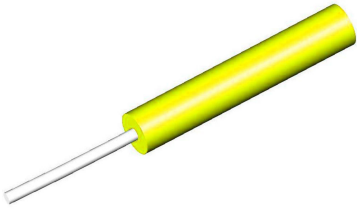
Regulatory Compliance/Certifications

Agency	Classification
ISO 9001:2015	Designed, manufactured and/or distributed under this quality management system

Included Products

- 760038570 – TeraSPEED® 900µm Tight Buffered Fiber X-TB-8W-YL-F/G
- 860648962 – SC/UPC Connector, Singlemode, Blue

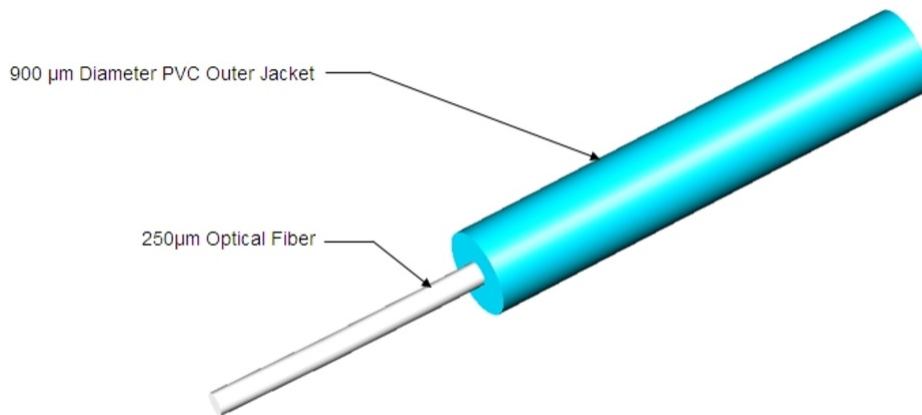
TeraSPEED® 900µm Tight Buffered Fiber



Product Classification

Regional Availability	Asia Australia/New Zealand EMEA Latin America North America
Portfolio	CommScope®
Product Type	Fiber indoor cable

Representative Image

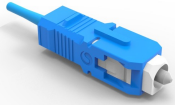


Regulatory Compliance/Certifications

Agency	Classification
CHINA-ROHS	Below maximum concentration value
ISO 9001:2015	Designed, manufactured and/or distributed under this quality management system
REACH-SVHC	Compliant as per SVHC revision on www.commscope.com/ProductCompliance
ROHS	Compliant
UK-ROHS	Compliant



SC/UPC Connector, Singlemode, Blue



Product Classification

Regional Availability	Asia Australia/New Zealand EMEA Latin America North America
Portfolio	CommScope®
Product Type	Fiber connector

General Specifications

Color, boot	Blue
Color, housing	Blue
Interface	SC/UPC

Dimensions

Length	42 mm 1.654 in
Compatible Cable Diameter	0.9 mm 0.035 in

Material Specifications

Ferrule Material	Zirconia
-------------------------	----------

Mechanical Specifications

Cable Retention Strength, maximum	4.40 lb @ 0 °
--	---------------

Optical Specifications

Fiber Mode	Singlemode
Insertion Loss Change, mating	0.2 dB
Optical Components Standard	ANSI/TIA-568. 3-D IEC 61753-1
Insertion Loss Change, temperature	0.2 dB
Insertion Loss, maximum	0.34 dB
Return Loss, minimum	50 dB

* Footnotes

Insertion Loss Change, mating TIA-568: Maximum insertion loss change after 500 matings

Insertion Loss Change, temperature Maximum insertion loss change from -10 °C to +60 °C (+14 °F to +140 °F)