

NHHSS-45C-R2BT2



10-port sector antenna, 2x 698–896, 4x 1695–2200 MHz and 4x 3100–4200, 45° HPBW, 2x RETs and 2x SBTs. Both high bands share the same electrical tilt.

- Perfect antenna to add 3.5GHz CBRS to macro sites
- Low band and mid band performance mirrors the performance of existing NHH hex port antennas
- Internal SBT on low and high band allow remote RET control from the radio over the RF jumper cable
- Separate RS-485 RET input/output for low and high band
- Interleaved dipole technology providing for attractive, low wind load mechanical package
- One LB RET and one HB RET. Both high bands are controlled by one RET to ensure same tilt level for 4x MIMO

OBSOLETE

This product was discontinued on: **March 30, 2023**

Replaced By:

NHHSS-45C-R2BT4 10-port sector antenna, 2x 698–896, 4x 1695–2200 MHz and 4x 3100–4200, 45° HPBW, 2x RETs and 2x SBTs. Both high bands share the same electrical tilt.

General Specifications

Antenna Type	Sector
Band	Multiband
Color	Light Gray (RAL 7035)
Grounding Type	RF connector inner conductor and body grounded to reflector and mounting bracket
Performance Note	Outdoor usage
Radome Material	Fiberglass, UV resistant
Radiator Material	Aluminum Low loss circuit board
Reflector Material	Aluminum
RF Connector Interface	4.3-10 Female
RF Connector Location	Bottom
RF Connector Quantity, high band	4
RF Connector Quantity, mid band	4
RF Connector Quantity, low band	2

NHHSS-45C-R2BT2

RF Connector Quantity, total 10

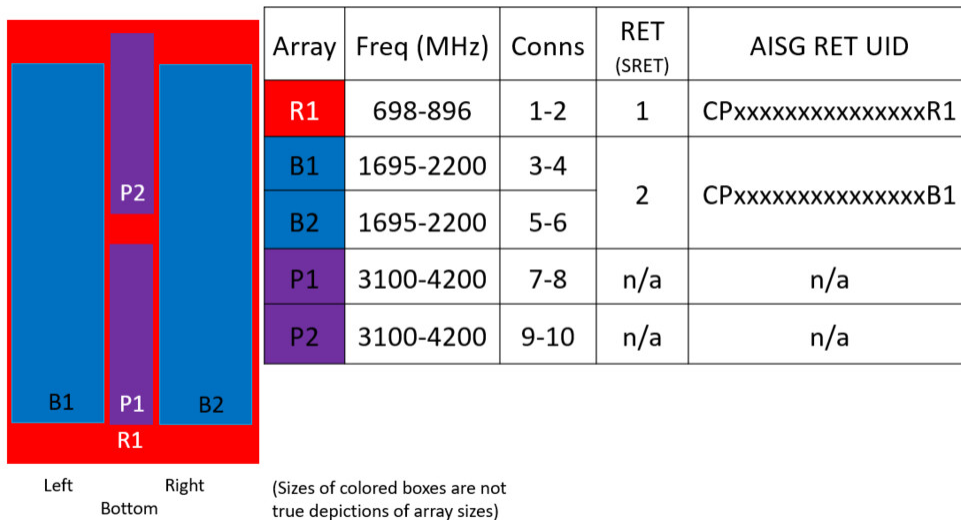
Remote Electrical Tilt (RET) Information

RET Hardware CommRET v2
RET Interface 8-pin DIN Female | 8-pin DIN Male
RET Interface, quantity 2 female | 2 male
Input Voltage 10–30 Vdc
Internal RET Low band (1) | Mid band (1)
Power Consumption, active state, maximum 10 W
Power Consumption, idle state, maximum 2 W
Protocol 3GPP/AISG 2.0

Dimensions

Width 457 mm | 17.992 in
Depth 178 mm | 7.008 in
Length 2437 mm | 95.945 in
Net Weight, antenna only 41.5 kg | 91.492 lb

Array Layout



Port Configuration

NHHSS-45C-R2BT2



Electrical Specifications

Impedance	50 ohm
Operating Frequency Band	1695 – 2200 MHz 3100 – 4200 MHz 698 – 896 MHz
Polarization	±45°
Total Input Power, maximum	1,000 W @ 50 °C

Electrical Specifications

	R1	R1	B1,B2	B1,B2	B1,B2	P1,P2	P1,P2	P1,P2
Frequency Band, MHz	698–806	806–896	1695–1880	1850–1990	1920–2200	3100–3550	3550–3700	3700–4200
RF Port	1,2	1,2	3,4,5,6	3,4,5,6	3,4,5,6	7,8,9,10	7,8,9,10	7,8,9,10
Gain, dBi	18	18.6	19.3	19.7	20.3	16.7	17.2	17.5
Beamwidth, Horizontal, degrees	46	41	45	43	41	49	43	39
Beamwidth, Vertical, degrees	9.3	8.2	5.7	5.4	5.1	9.7	9.2	8.4
Beam Tilt, degrees	0–10	0–10	0–8	0–8	0–8	2	2	2
USLS (First Lobe), dB	18	22	15	16	16	17	15	13
Front-to-Back Ratio at 180°, dB	32	34	33	34	36	30	30	28
Isolation, Cross Polarization, dB	25	25	25	25	25	25	25	25

NHHSS-45C-R2BT2

Isolation, Inter-band, dB	30	30	28	28	28	28	28	28
VSWR Return loss, dB	1.5 14.0	1.5 14.0	1.5 14.0	1.5 14.0	1.5 14.0	1.5 14.0	1.5 14.0	1.5 14.0
PIM, 3rd Order, 2 x 20 W, dBc	-153	-153	-153	-153	-153	-145	-145	-145
Input Power per Port at 50°C, maximum, watts	250	250	250	250	250	100	100	100

Electrical Specifications, BASTA

Frequency Band, MHz	698–806	806–896	1695–1880	1850–1990	1920–2200	3100–3550	3550–3700	3700–4200
Gain by all Beam Tilts, average, dBi	17.6	18.4	18.9	19.5	19.8	16.3	17	17.1
Gain by all Beam Tilts Tolerance, dB	±0.8	±0.3	±0.8	±0.4	±0.5	±0.6	±0.4	±0.6
Beamwidth, Horizontal Tolerance, degrees	±2	±2	±3	±2	±2	±8	±4	±4
Beamwidth, Vertical Tolerance, degrees	±0.6	±0.3	±0.3	±0.2	±0.4	±0.8	±0.7	±0.9
USLS, beampeak to 20° above beampeak, dB	16	15	15	15	15	16	15	13
Front-to-Back Total Power at 180° ± 30°, dB	24	25	24	26	27	27	25	23
CPR at Boresight, dB	20	21	19	19	17	14	15	16
CPR at Sector, dB	13	10	3	3	4	5	7	5

Mechanical Specifications

Wind Loading @ Velocity, frontal	1,485.0 N @ 150 km/h (333.8 lbf @ 150 km/h)
Wind Loading @ Velocity, lateral	315.0 N @ 150 km/h (70.8 lbf @ 150 km/h)
Wind Loading @ Velocity, maximum	1,485.0 N @ 150 km/h (333.8 lbf @ 150 km/h)
Wind Loading @ Velocity, rear	1,304.0 N @ 150 km/h (293.2 lbf @ 150 km/h)
Wind Speed, maximum	241 km/h (150 mph)

Packaging and Weights

Width, packed	526 mm 20.709 in
Depth, packed	283 mm 11.142 in
Length, packed	2604 mm 102.52 in
Weight, gross	60.5 kg 133.38 lb

Regulatory Compliance/Certifications

Agency	Classification
---------------	-----------------------

NHHSS-45C-R2BT2

CHINA-ROHS	Above maximum concentration value
ISO 9001:2015	Designed, manufactured and/or distributed under this quality management system
ROHS	Compliant/Exempted
UK-ROHS	Compliant/Exempted



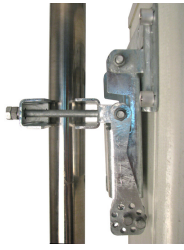
Included Products

- | | | |
|----------|---|--|
| BSAMNT-3 | - | Wide Profile Antenna Downtilt Mounting Kit for 2.4 - 4.5 in (60 - 115 mm) OD round members. Kit contains one scissor top bracket set and one bottom bracket set. |
| BSAMNT-M | - | Middle Downtilt Mounting Kit for Long Antennas for 2.4 - 4.5 in (60 - 115 mm) OD round members. Kit contains one scissor bracket set. |

* Footnotes

Performance Note Severe environmental conditions may degrade optimum performance

BSAMNT-3



Wide Profile Antenna Downtilt Mounting Kit for 2.4 - 4.5 in (60 - 115 mm) OD round members. Kit contains one scissor top bracket set and one bottom bracket set.

Product Classification

Product Type Downtilt mounting kit

General Specifications

Application Outdoor

Color Silver

Dimensions

Compatible Diameter, maximum 115 mm | 4.528 in

Compatible Diameter, minimum 60 mm | 2.362 in

Weight, net 6.2 kg | 13.669 lb

Material Specifications

Material Type Galvanized steel

Packaging and Weights

Included Brackets | Hardware

Packaging quantity 1

Weight, gross 6.4 kg | 14.11 lb

Regulatory Compliance/Certifications

Agency	Classification
CE	Compliant with the relevant CE product directives
CHINA-ROHS	Below maximum concentration value
ISO 9001:2015	Designed, manufactured and/or distributed under this quality management system
REACH-SVHC	Compliant as per SVHC revision on www.commscope.com/ProductCompliance
ROHS	Compliant
UK-ROHS	Compliant

BSAMNT-3



BSAMNT-M



Middle Downtilt Mounting Kit for Long Antennas for 2.4 - 4.5 in (60 - 115 mm) OD round members. Kit contains one scissor bracket set.

Product Classification

Product Type Downtilt mounting kit

General Specifications

Application Outdoor

Color Silver

Dimensions

Compatible Diameter, maximum 115 mm | 4.528 in

Compatible Diameter, minimum 60 mm | 2.362 in

Weight, net 4.5 kg | 9.921 lb

Material Specifications

Material Type Galvanized steel

Packaging and Weights

Included Brackets | Hardware

Packaging quantity 1

Regulatory Compliance/Certifications

Agency	Classification
CHINA-ROHS	Below maximum concentration value
ISO 9001:2015	Designed, manufactured and/or distributed under this quality management system
REACH-SVHC	Compliant as per SVHC revision on www.commscope.com/ProductCompliance
ROHS	Compliant
UK-ROHS	Compliant

