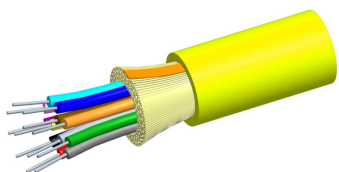


Fiber indoor cable, Plenum Distribution, 6 fiber single-unit, Singlemode G. 657.A1, Meters jacket marking, Yellow jacket color



Product Classification

Regional Availability	Asia Australia/New Zealand
Portfolio	CommScope®
Product Type	Fiber indoor cable
Product Series	P-DS

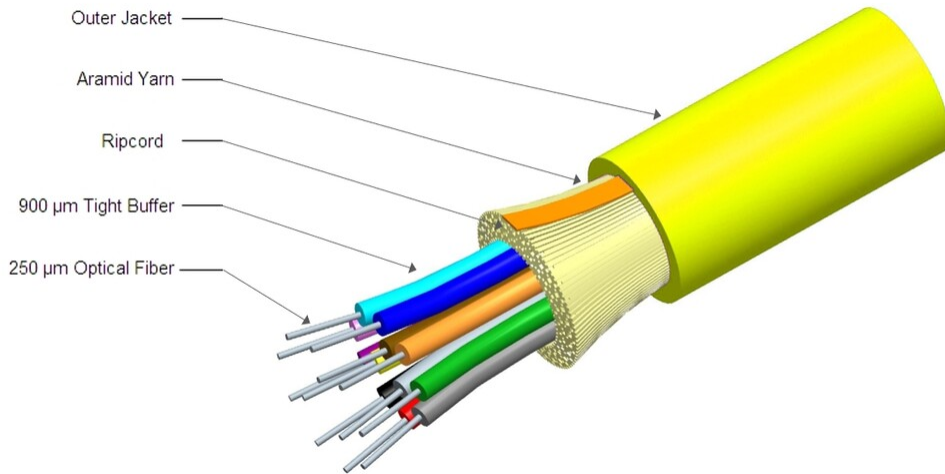
General Specifications

Cable Type	Distribution
Construction Type	Non-armored
Subunit Type	Gel-free
Jacket Color	Yellow
Jacket Marking	Meters
Total Fiber Count	6

Dimensions

Diameter Over Jacket	4.8 mm 0.189 in
-----------------------------	-------------------

Representative Image



Mechanical Specifications

Minimum Bend Radius, loaded	96 mm 3.78 in
Minimum Bend Radius, unloaded	48 mm 1.89 in
Tensile Load, long term, maximum	198 N 44.512 lbf
Tensile Load, short term, maximum	660 N 148.374 lbf
Compression	10 N/mm 57.101 lb/in
Compression Test Method	IEC 60794-1-21 E3
Strain	See long and short term tensile loads
Strain Test Method	IEC 60794-1-21 E1

Optical Specifications

Fiber Type G.657.A1

Optical Specifications, Wavelength Specific

Attenuation, maximum 0.30 dB/km @ 1,550 nm | 0.4 dB/km @ 1,310 nm

Environmental Specifications

Installation temperature	0 °C to +60 °C (-32 °F to +140 °F)
Operating Temperature	0 °C to +70 °C (+32 °F to +158 °F)
Storage Temperature	-40 °C to +70 °C (-40 °F to +158 °F)
Environmental Space	Plenum

Flame Test Listing NEC OFNP (UL) and c(UL)

Flame Test Method NFPA 262

Environmental Test Specifications

Temperature Cycle Test Method IEC 60794-1-22 F1

Regulatory Compliance/Certifications

Agency	Classification
CHINA-ROHS	Below maximum concentration value
REACH-SVHC	Compliant as per SVHC revision on www.commscope.com/ProductCompliance
ROHS	Compliant
UK-ROHS	Compliant



Included Products

CS-8Z-TB-0.40/0.30/093 – Low Water Peak, Dispersion-Unshifted Singlemode Fiber

* Footnotes

Operating Temperature Specification applicable to non-terminated bulk fiber cable