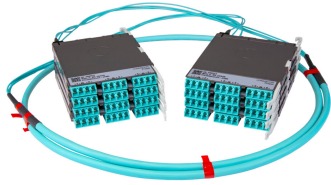


PPLUQGFLCLCF



Propel ULL Singlemode Cabled Module, 1x24f duplex LC Propel module on End A to 1x24 on End B, 24 fiber Plenum Patchcord, Method B Enhanced

- This component requires 6 of the 12 lanes on the Propel Panel blade
- Ultra-low loss (ULL) with Method B Enhanced polarity
- End A module can be installed from rear of panel
- Serialized QR code provides easy access to factory optical test results

Product Classification

Regional Availability	Asia Australia/New Zealand EMEA Latin America North America
Portfolio	SYSTIMAX®
Product Type	Fiber cabled module
Product Brand	Propel
Product Series	PPL
Ordering Note	End B module is the same module as End A For lengths greater than 999 ft (304 m), orders must be in meters Maximum length is 400 meters

General Specifications

Configuration Type	PROPEL Module to PROPEL Module
Cable Color	Yellow
Cable Type	Patch cord Plenum
Interface, front	LC/UPC
Interface Feature, front	Duplex Shuttered
Interface Color, front	Blue
Interface, rear	LC/UPC
Interface Feature, rear	Duplex Shuttered
Interface Color, rear	Blue
Module Size, end A	24 fiber
Module Size, end B	24 fiber
Module Quantity, end A	1
Module Quantity, end B	1
Polarity	Method B Enhanced (ULL)

PPLUQGFLCLCF

Total Fibers, quantity	24
Total Ports, quantity, front	12
Total Ports, quantity, rear	12

Dimensions

Height	11 mm 0.433 in
Width	131 mm 5.157 in
Depth	170 mm 6.693 in
Breakout Length, end B	23 in
Cable Assembly Length Range (m)	1 – 400
Cable Assembly Length Range (ft)	2 – 999

Ordering Tree



Optical Specifications

Fiber Mode	Singlemode
Fiber Type	OS2
Insertion Loss, maximum	0.6 dB

Environmental Specifications

Qualification Standards	IEC 61753-1 TIA-568.3-D
Safety Standard	c-UL-us

Packaging and Weights

Packaging quantity	1
---------------------------	---

Regulatory Compliance/Certifications

PPLUQGFLCLCF

Agency

CHINA-ROHS

ROHS

UK-ROHS



Classification

Above maximum concentration value

Compliant/Exempted

Compliant/Exempted

Included Products

760245873

P-024-MP-8G1-F36YL

- Fiber indoor cable, Plenum for MPO Light Duty Patchcords, 24 fiber, Singlemode G.657.A2/B2, Feet jacket marking, Yellow jacket color