

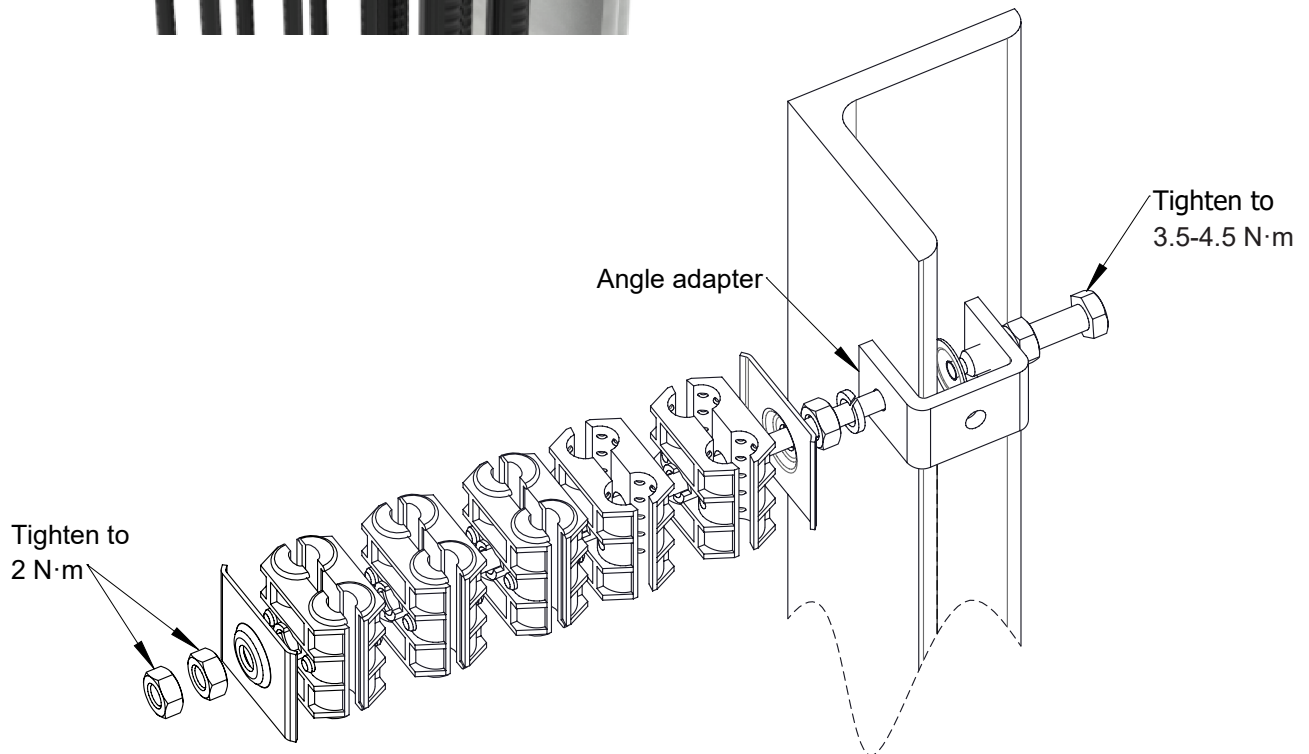
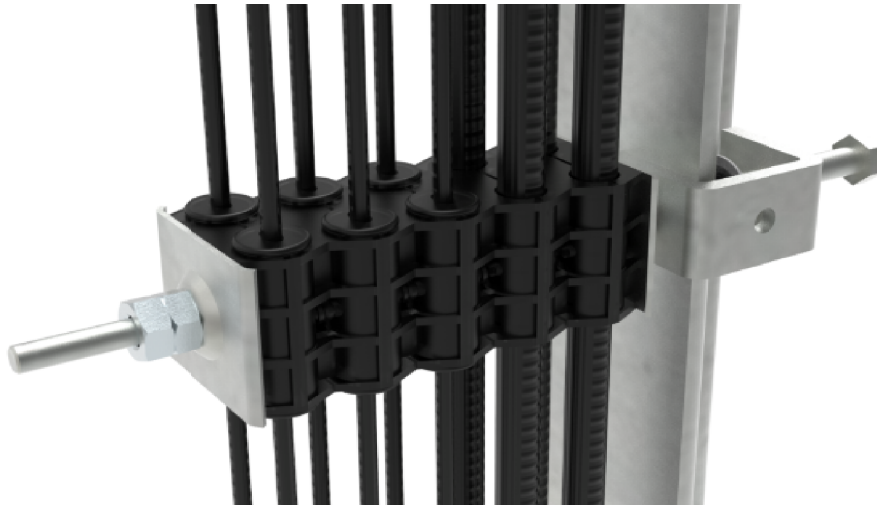
## Double Hanger Kit: SH-CLAMP-6F4P-5B

for Fiber, Power Cables

Bulletin 7859903 Rev. C Page 1 of 1

### Description

The Double Hanger Kit consists of a angle adapter, which mounts on angle iron 3-25 mm, installation hardware and support blocks that surround the cables. This kit supports the installation of four 9-11 mm power cables and six 4-7 mm fiber cables.



**CommScope**  
 3642 E US Highway 70, Claremont, NC 28610 USA  
 (828) 324-2200 (800) 982-1708  
[www.commscope.com](http://www.commscope.com)

**Technical Support**  
 +1 888 297 6433, Option 3 (Toll Free US and Canada)  
 +1 49-9099-69-333  
<https://www.commscope.com/wisupport> (open a ticket)

Notice: CommScope disclaims any liability or responsibility for the results of improper or unsafe installation, inspection, maintenance, or removal practices.  
 Aviso: CommScope no acepta ninguna obligación ni responsabilidad como resultado de prácticas incorrectas o peligrosas de instalación, inspección, mantenimiento o retiro.  
 Avis: CommScope décline toute responsabilité pour les conséquences de procédures d'installation, d'inspection, d'entretien ou de retrait incorrectes ou dangereuses.  
 Hinweis: CommScope lehnt jede Haftung oder Verantwortung für Schäden ab, die aufgrund unsachgemäßer Installation, Überprüfung, Wartung oder Demontage auftreten.  
 Atenção: A CommScope abdica do direito de toda responsabilidade pelos resultados de práticas inadequadas e sem segurança de instalação, inspeção, manutenção ou remoção.  
 Avvertenza: CommScope declina eventuali responsabilità derivanti dall'esecuzione di procedure di installazione, ispezione, manutenzione e smontaggio improprie o poco sicure.  
 注意: CommScope 公司申明對於不恰當或不安全的安裝、檢驗、維修或拆卸操作所導致的後果不負責任 何義務和責任