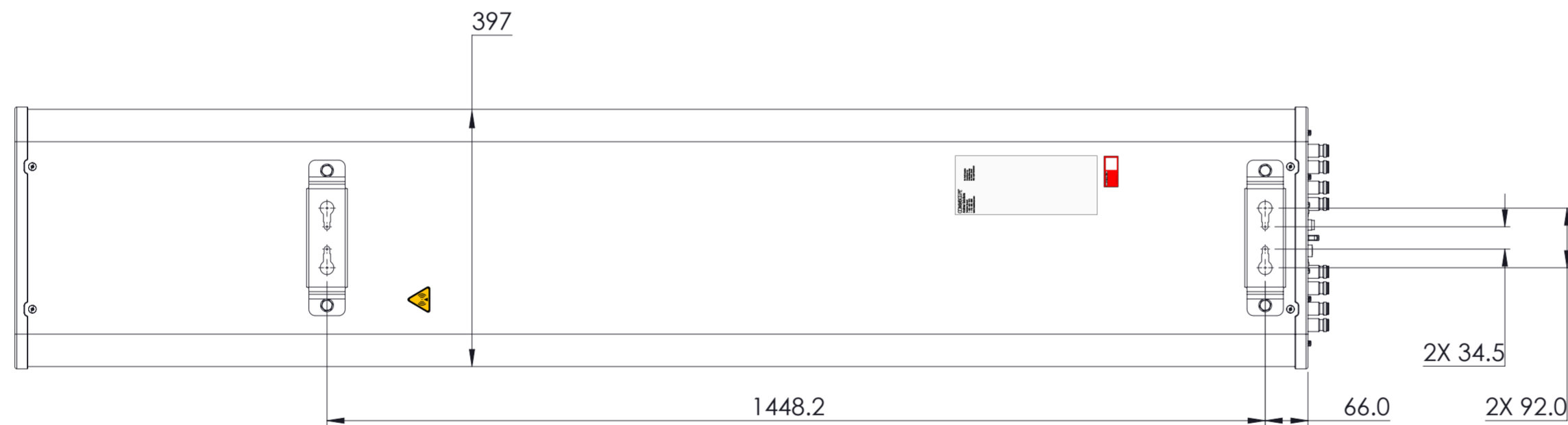
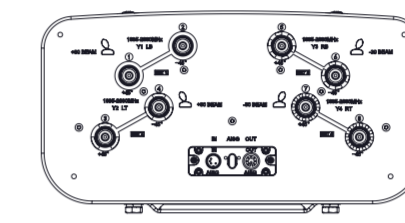
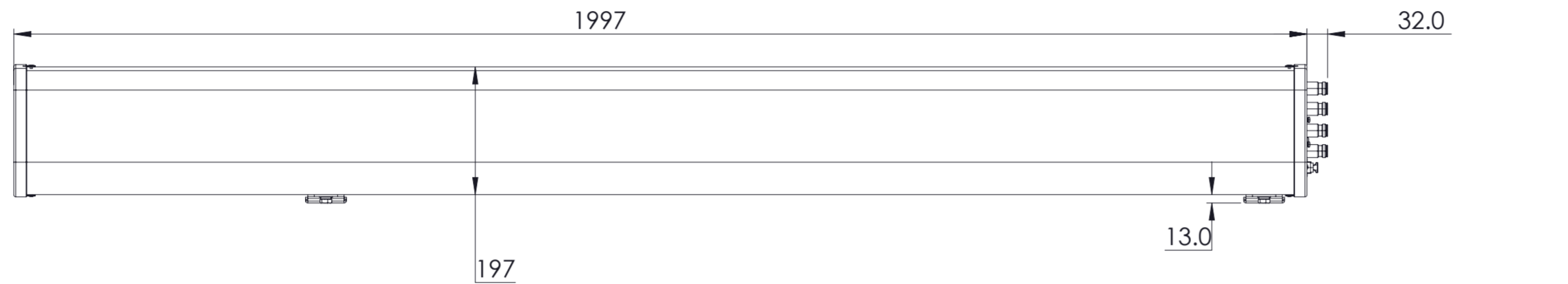


| REVISIONS |  |            |          |
|-----------|--|------------|----------|
| REV.      | DESCRIPTION  | DATE       | APPROVED |
| A         | ECR 40183093CMO: RELEASE TO PRODUCTION PER EAO 612341. | 14NOV23 LY | SWU/XZJ  |



2VV-33B-R4VB

**COMMSCOPE, INC. OF NORTH CAROLINA**

|   |               |                     |                         |
|---|---------------|---------------------|-------------------------|
| TOLERANCES  |               | SAP MATERIAL MASTER |                         |
| 0 PLACE X ±   | 2 PLACE .XX ± |                     |                         |
| 1 PLACE .X ±  | ANGLES ±      |                     |                         |
| FINISH  |               | MATERIAL            |                         |
| <small>UNLESS OTHERWISE SPECIFIED<br/>DIMENSIONS ARE IN MILLIMETERS<br/>INTERPRET PER ISO STANDARDS<br/>HANDBOOK TECHNICAL DRAWINGS<br/>VOLUMES 1 &amp; 2, THIRD EDITION (2002)</small> |               | NAME                | DATE                    |
|   |               | CE LY1028           | 14NOV23                 |
|   |               | RW LY1028           | 11/15/2023              |
|   |               | AD ZX1004           | 11/15/2023              |
|   |               | RE XS1022           | 11/17/2023              |
| ECN 40183093CMO   |               | SCALE               | DOCUMENT NO.            |
|   |               | 1:8                 | 2VV-33B-R4VB-L          |
| SIZE  | Auth Group    | BSA                 | MODEL                   |
| A2  |               |                     | VERSION STATUS REVISION |
| HEIGHT  |               | DRAWING             |                         |
| LENGTH  |               | VERSION             | STATUS REVISION         |
| WIDTH   |               | 00                  | RE A                    |
|   |               |                     | SHEET                   |
|   |               |                     | 1 OF 1                  |