

4

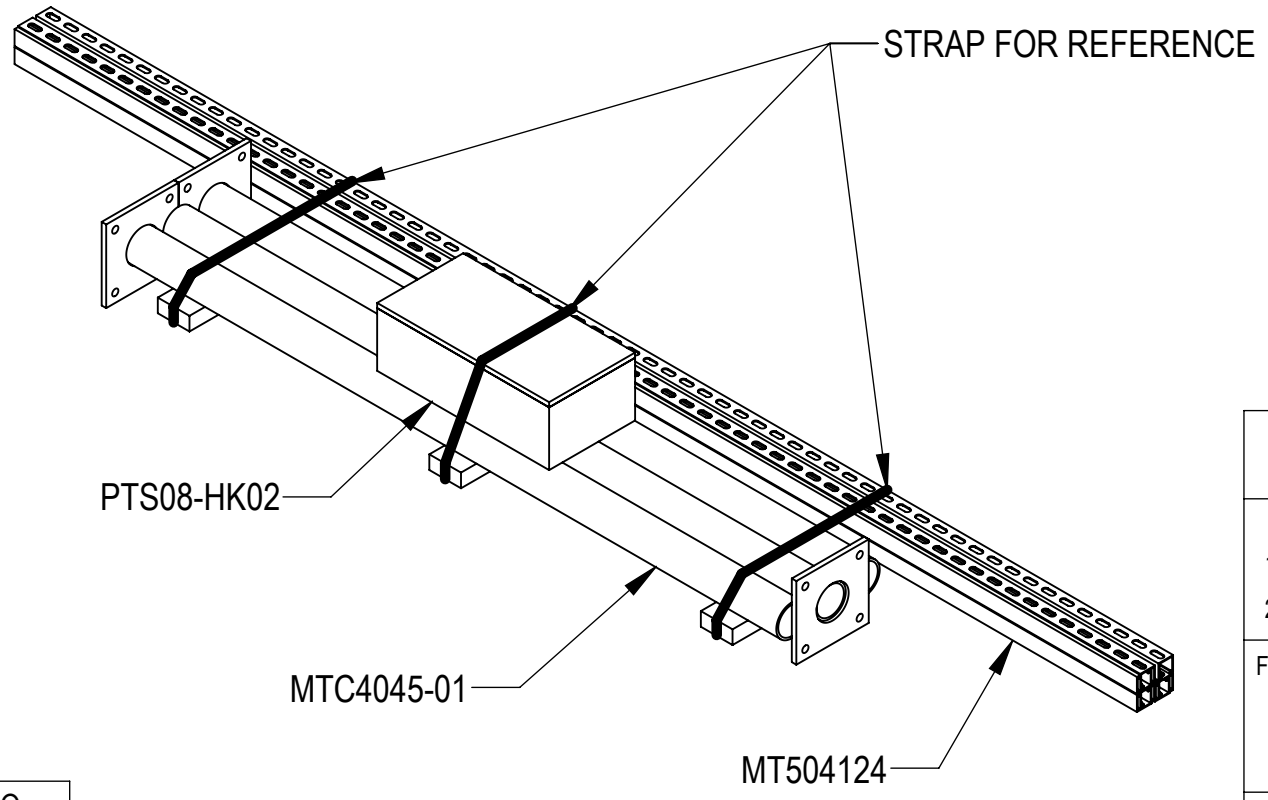
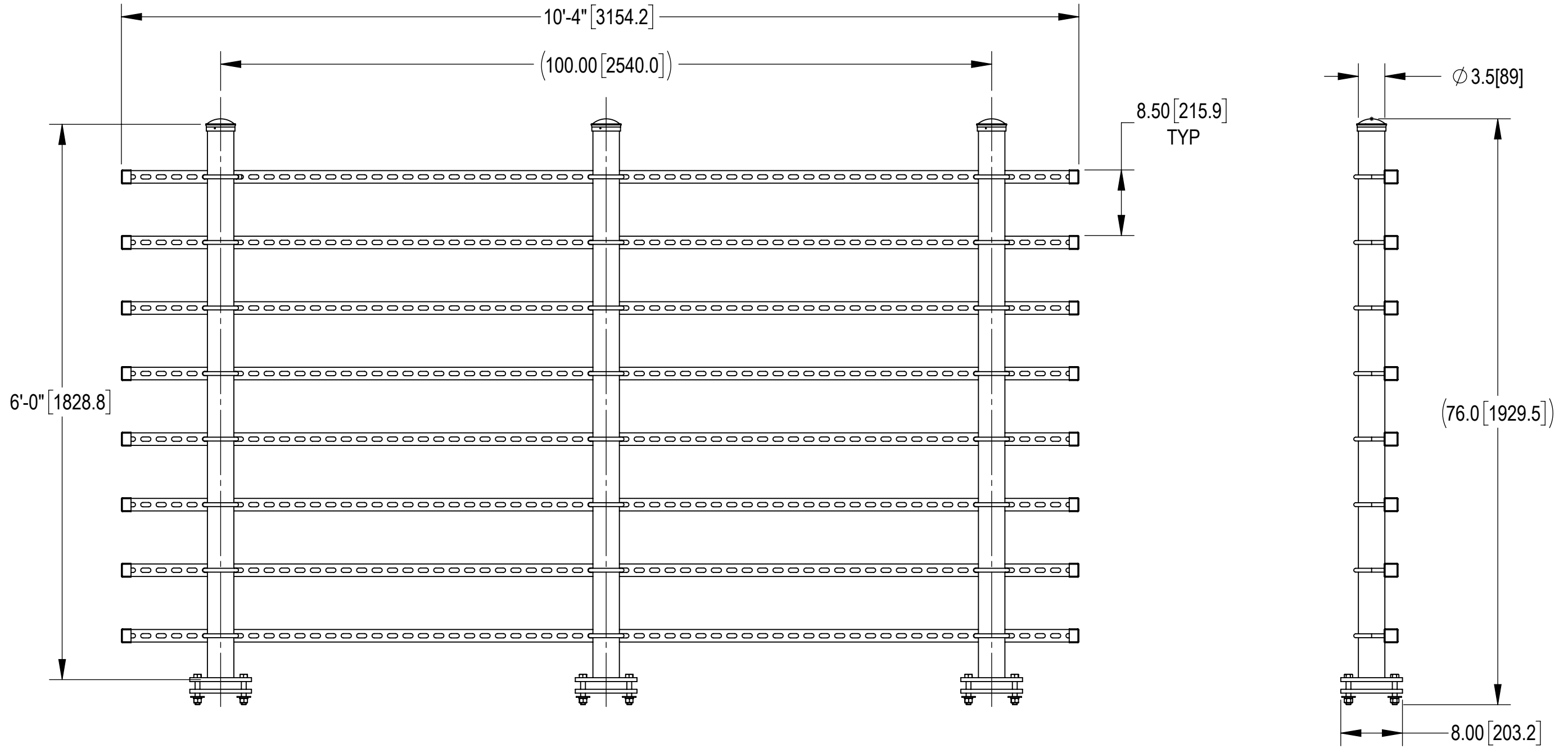
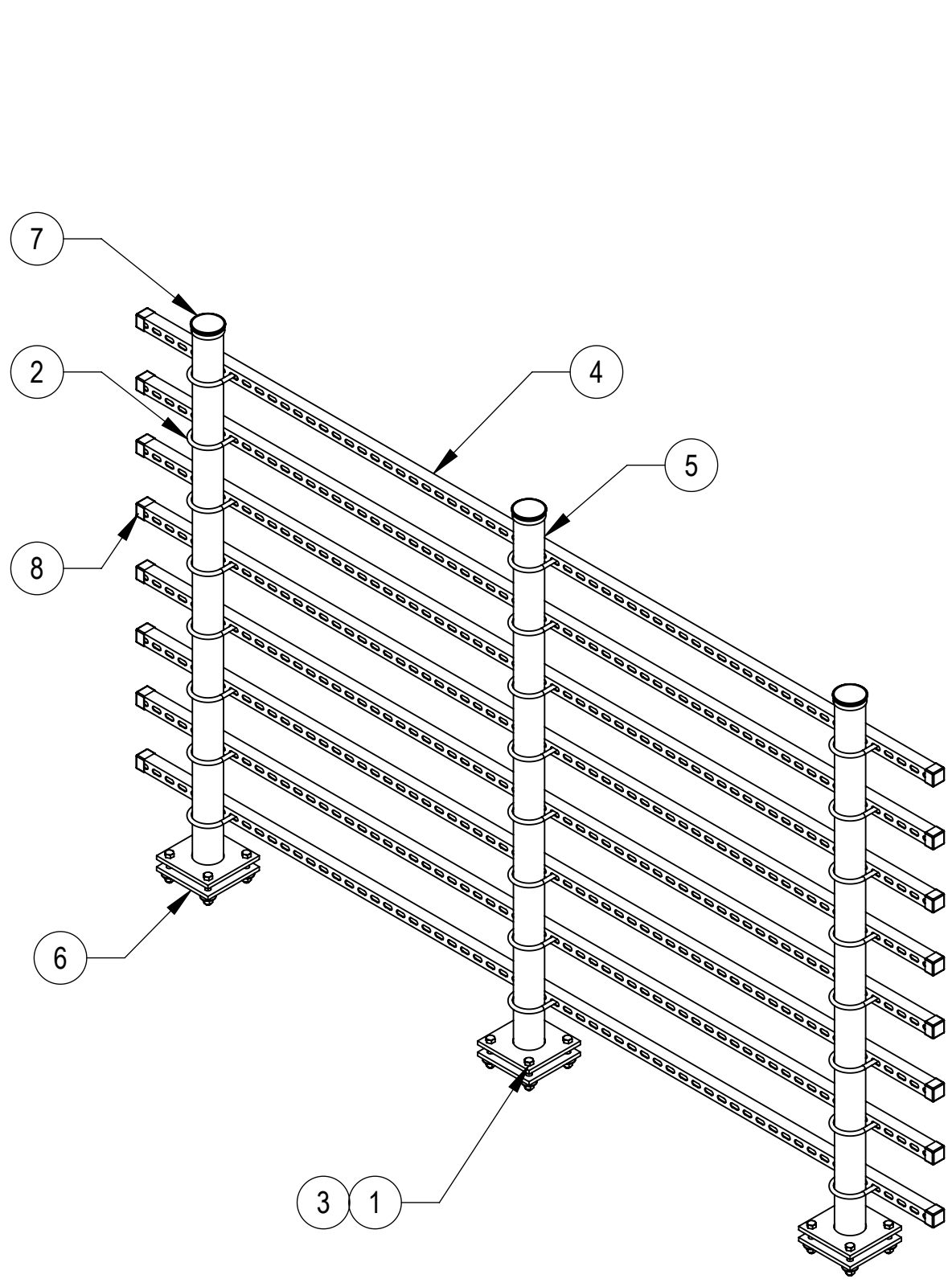
3

2

1

- 1.0 GENERAL NOTES
 - 1.1 ALL METRIC DIMENSIONS ARE IN BRACKETS [X.X]
 - 1.2 FOR PATENT INFO: <https://www.cs-pat.com>
- 2.0 DESIGN NOTES
- 3.0 MANUFACTURING/SPECIAL REQUIREMENTS
 - 3.1 TIGHTEN ALL BOLTS SECURING FLAT PLATES BY THE TURN-OF-NUT METHOD. TIGHTEN ALL U-BOLTS USING TURN-OF-NUT METHOD WITH ATTENTION TO LEAVE EQUAL DISTANCE AND EQUAL FORCE ON EACH LEG OF THE U-BOLT.
- 4.0 TEST
- 5.0 PACKAGING
 - 5.1 PACKAGING SHALL MEET COMMSCOPE REQUIREMENTS PER DOCUMENT IS-PL-3005
 - 5.2 PRINTED DOCUMENT TO BE PLACED INSIDE POLYBAG AND THEN IN SHIPPING CONTAINER
 - 5.3 EXTRA HARDWARE MAY BE SUPPLIED, BAGGED AND SHIPPED

| REVISIONS | | | |
|-----------|-----------------|-------------------|-----------------------|
| REV. | DESCRIPTION | DATE | APPROVED |
| A | INITIAL RELEASE | LS1146 21MAY24 | XK1001 40195933CMO |



COMPONENT PART NUMBERS PROVIDED FOR ASSEMBLY PURPOSES;
INDIVIDUAL COMPONENTS MAY BE SHIPPED AS PARTS WITHIN AN INCLUDED KIT.

| ITEM | PART NO. | DESCRIPTION | QTY. | WEIGHT | NOTE NO. |
|------|------------|-----------------------------------------|------|-----------|----------|
| 1 | GB-05345 | 5/8" X 3-1/2" GALV BOLT KIT | 12 | 0.39 LBS | |
| 2 | GUB-4355 | 1/2" X 3-5/8" X 5" GALV U-BOLT | 24 | 0.71 LBS | |
| 3 | GW-05 | 5/8" GALV FLAT WASHER, 1.70D | 12 | 0.06 LBS | |
| 4 | MT504124 | UNISTRUT, SLOTTED, GALV, 1-5/8 SQ X 124 | 8 | 19.16 LBS | |
| 5 | MTC4045-01 | WELDMENT, 6" PIPE | 3 | 52.14 LBS | |
| 6 | MTC4045-12 | BASE PLATE, 3" PIPE | 3 | 7.47 LBS | |
| 7 | PC-034 | PIPE CAP 3-1/2" | 3 | 0.66 LBS | |
| 8 | PTCR01 | END CAP | 16 | 0.05 LBS | |

PACKING VIEW

| | | |
|--------------|----------|---------------------|
| DENSITY | | lbs/in ³ |
| MASS | 358.67 | lbs |
| VOLUME | 1280.19 | in ³ |
| SURFACE AREA | 17151.65 | in ² |
| HEIGHT | 76.0" | |
| LENGTH | 124.0" | |
| WIDTH | 8.0" | |

COMMSCOPE, INC. OF NORTH CAROLINA

| | | | |
|-------------------------------------------------------------------------------------|------------------------------|---------------------|-----------------------------------|
| TOLERANCES | | SAP MATERIAL MASTER | |
| 1 PLACE .X[X] ± 0.2[6.3] | 3 PLACE .XXX[X] ± 0.060[1.5] | PT-S-0610-08 | |
| 2 PLACE .XX[X] ± 0.12[3.0] | ANGLES ± 2° | | |
| FINISH | | MATERIAL | |
| UNLESS OTHERWISE SPECIFIED DIMENSIONS ARE IN INCHES INTERPRET PER ANSI Y 14.5M-1994 | | NAME | TITLE |
| | | CE LS1146 | H-FRAME BS 6'TALL 10'WIDE 8-RUNGS |
| | | RW LS1146 | |
| | | AD XK1001 | |
| | | RE YMENG | |
| ECN 40195933CMO | | SCALE | DOCUMENT NO. |
| | | 1:12 | PT-S-0610-08 |
| SIZE | Auth Group | INSL | MODEL |
| C | | VERSION | STATUS |
| | | 00 | IW |
| | | REVISION | DRAWING |
| | | 00 | RE |
| | | A | A |
| | | | SHEET |
| | | | 1 OF 2 |

4

3

2

1

D

D

C

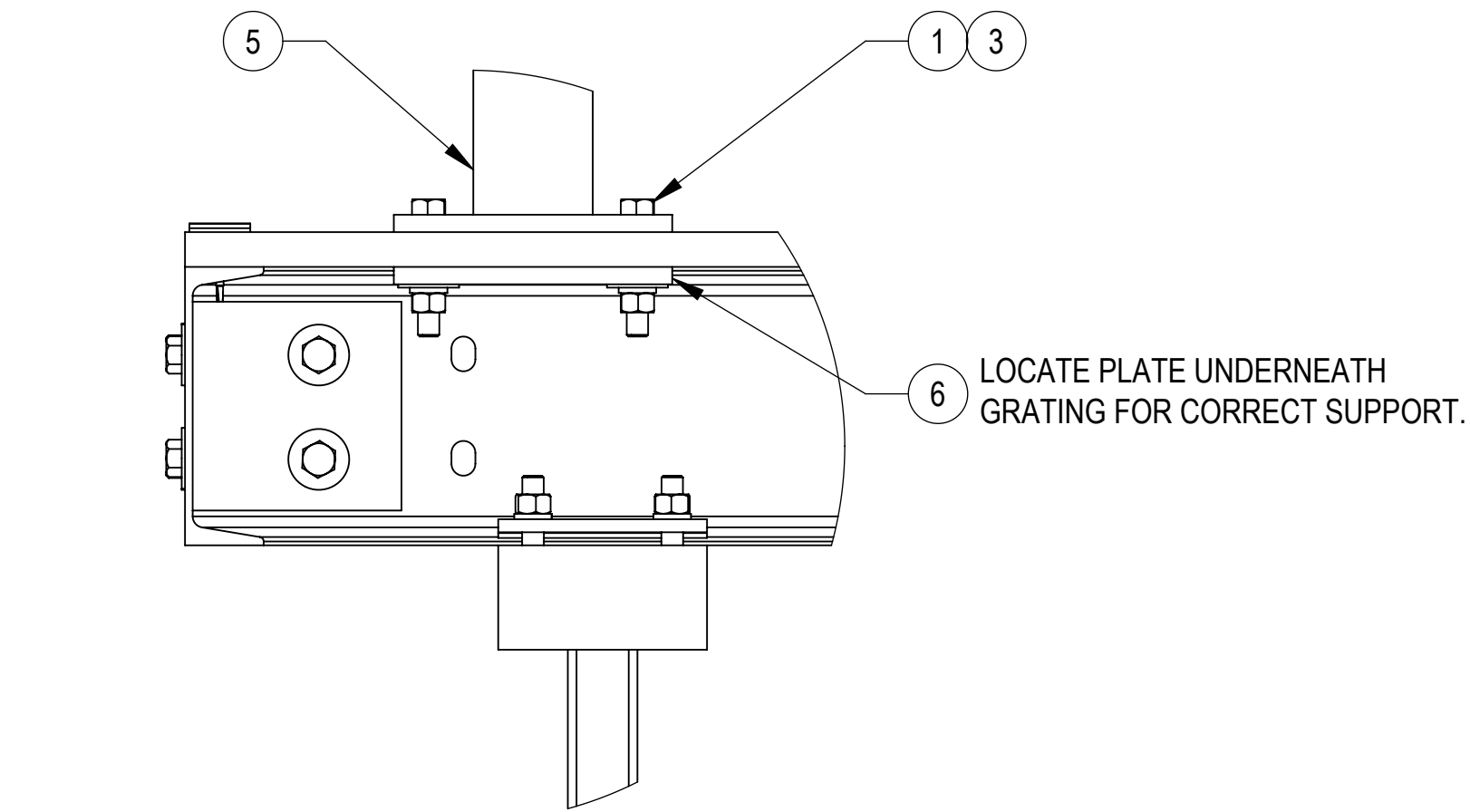
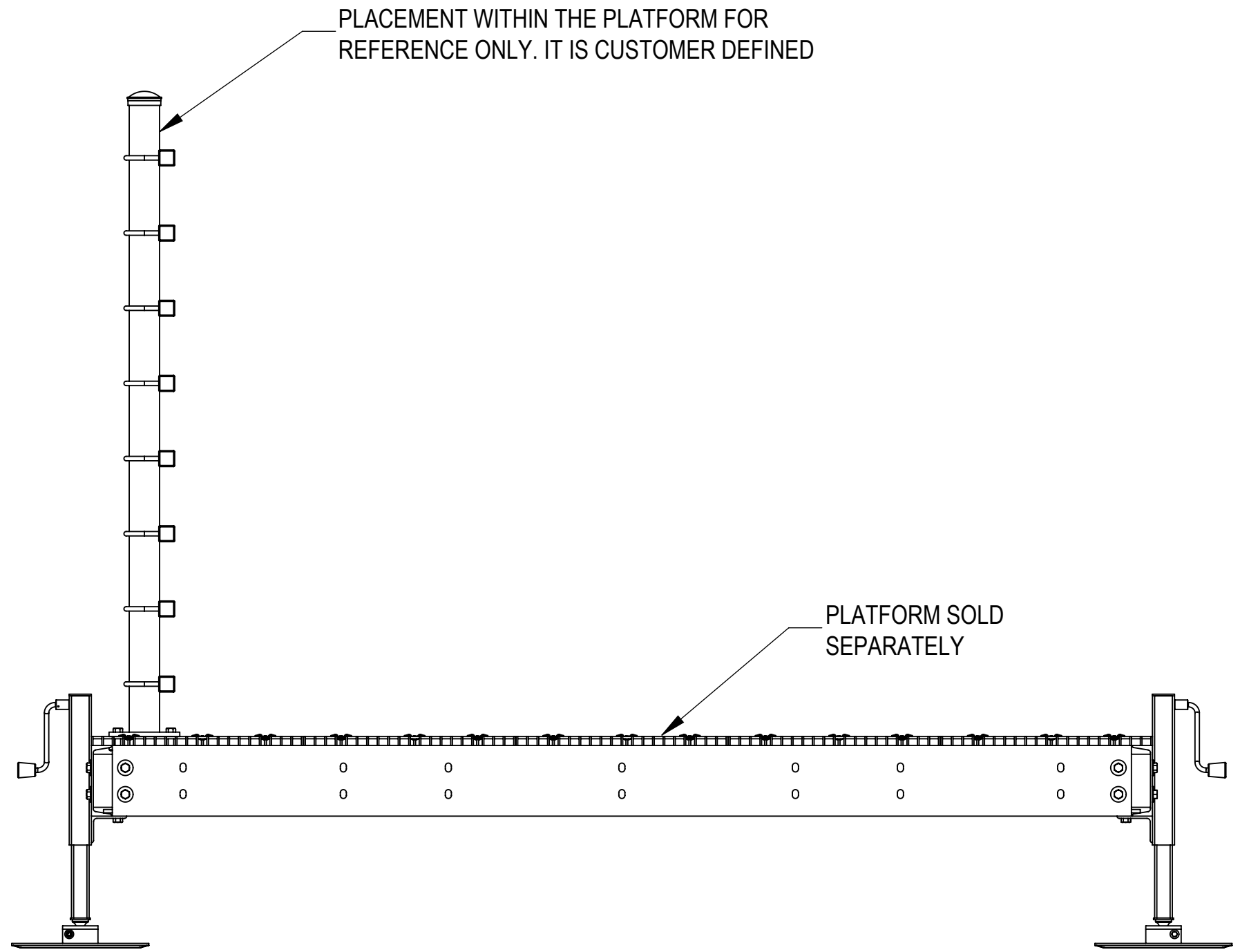
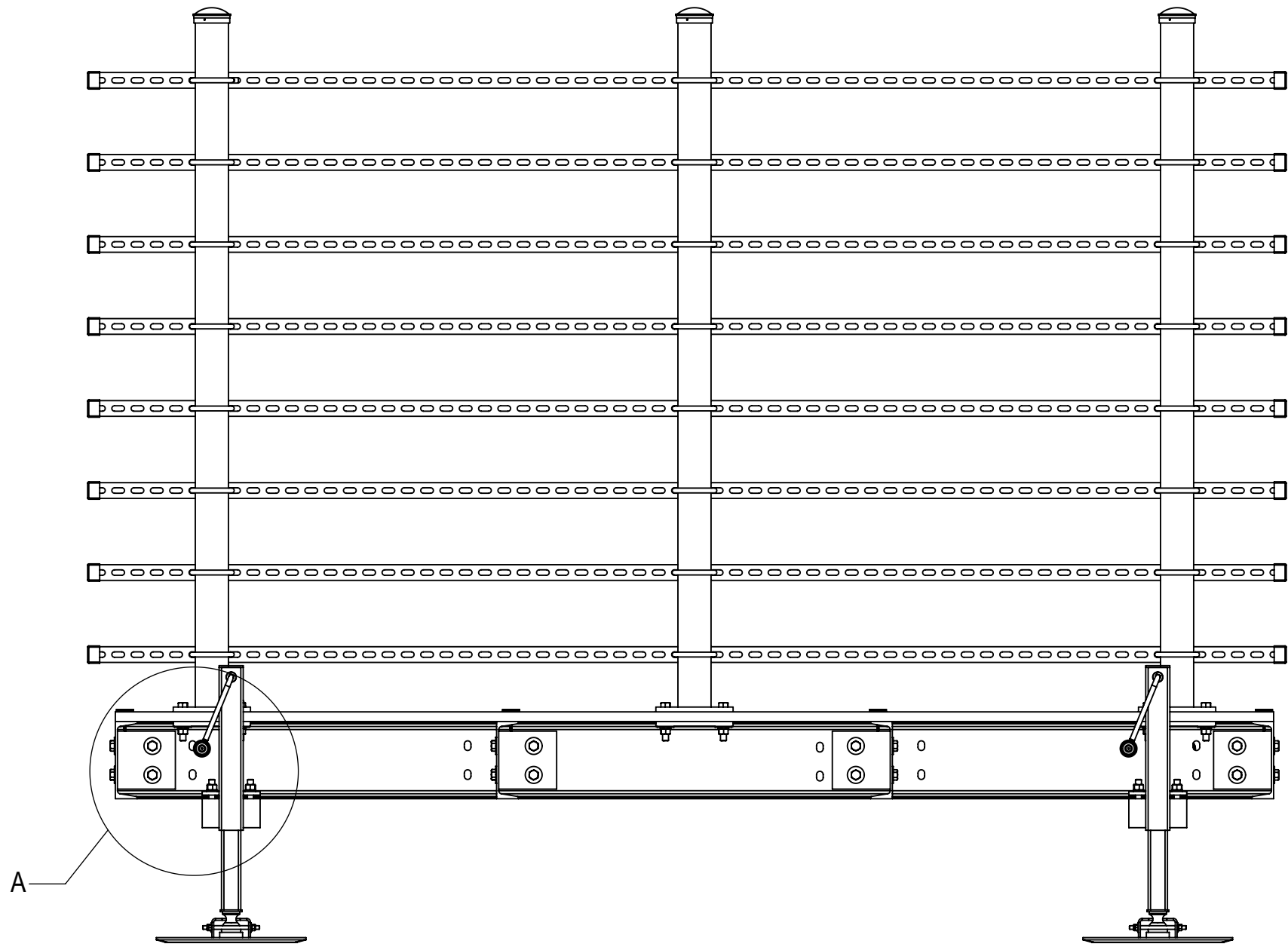
C

B

B

A

A



DETAIL A
SCALE 1 : 5

| | | | | |
|--------------------------------------------|----------------------|------------------------------|--------|----------|
| COMMSCOPE, INC. OF NORTH CAROLINA | | | | |
| TITLE H-FRAME BS 6'TALL 10'WIDE 8-RUNGS | | | | |
| SIZE C | SCALE 1:12 | DOCUMENT NO. PT-S-0610-08 | | |
| | | DRAWING | | SHEET |
| | | VERSION | STATUS | REVISION |
| | | 00 | RE | A |
| | | | | 2 OF 2 |

4

3

2

1

