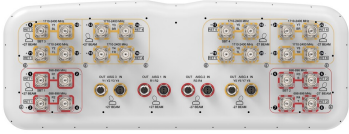


2NN2H4-33B-R6B



24-Port antenna, 8 x 698-896 MHz, 16 x 1710-2400 MHz, 33° HPBW, 6 x RETs, 4x SBTs, 6ft Length

- Provides 4 ports per beam for low band and 8 ports per beam for mid band
- Twin beam patterns are optimized for minimum beam crossover providing for improved 4G and 5G data throughput

General Specifications

Antenna Type	Multibeam
Band	Multiband
Color	Light Gray (RAL 7035)
Grounding Type	RF connector inner conductor and body grounded to reflector and mounting bracket
Performance Note	Outdoor usage
Radome Material	Fiberglass, UV resistant
Radiator Material	Low loss circuit board
Reflector Material	Aluminum
RF Connector Interface	4.3-10 Female
RF Connector Location	Bottom
RF Connector Quantity, high band	0
RF Connector Quantity, mid band	16
RF Connector Quantity, low band	8
RF Connector Quantity, total	24

Remote Electrical Tilt (RET) Information

RET Hardware	CommRET v2
RET Interface	8-pin DIN Female 8-pin DIN Male
RET Interface, quantity	4 female 4 male
Input Voltage	10-30 Vdc
Internal Bias Tee	Port 1 Port 17 Port 5 Port 9
Internal RET	Low band (2) Mid band (4)
Power Consumption, active state, maximum	10 W
Power Consumption, idle state, maximum	2 W

2NN2H4-33B-R6B

Protocol 3GPP/AISG 2.0 (Multi-RET)

Dimensions

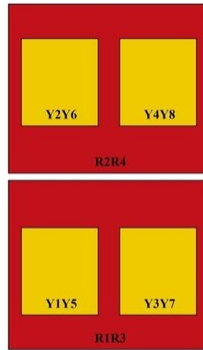
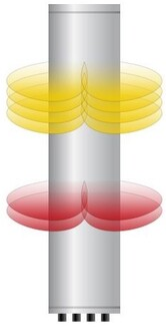
Width 640 mm | 25.197 in

Depth 235 mm | 9.252 in

Length 1828 mm | 71.969 in

Net Weight, antenna only 59.5 kg | 131.175 lb

Array Layout

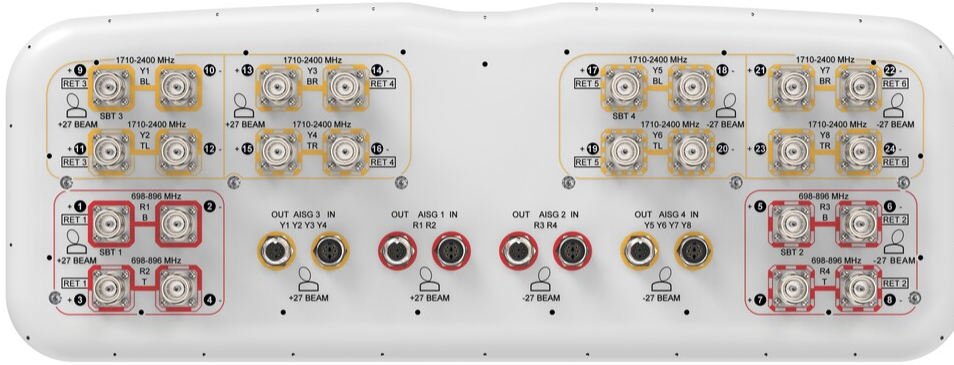


Array ID	Frequency (MHz)	RF Connector	RET (SBET)	AISG No.	SBT RF PORT	SBT No.	RET UID
R1	698-896	1 - 2	1	AISG1	1	1	CPXXXXXXXXXXXXR1
R2	698-896	3 - 4					CPXXXXXXXXXXXXR3
R3	698-896	5 - 6					CPXXXXXXXXXXXXR3
R4	698-896	7 - 8					CPXXXXXXXXXXXXR3
Y1	1710-2400	9 - 10	3	AISG3	9	3	CPXXXXXXXXXXXXY1
Y2	1710-2400	11 - 12					CPXXXXXXXXXXXXY1
Y3	1710-2400	13 - 14	4	AISG3			CPXXXXXXXXXXXXY3
Y4	1710-2400	15 - 16					CPXXXXXXXXXXXXY3
Y5	1710-2400	17 - 18	5	AISG4	17	4	CPXXXXXXXXXXXXY5
Y6	1710-2400	19 - 20					CPXXXXXXXXXXXXY5
Y7	1710-2400	21 - 22	6	AISG4			CPXXXXXXXXXXXXY7
Y8	1710-2400	23 - 24					CPXXXXXXXXXXXXY7

(Sizes of colored boxes are not true depictions of array sizes)

Port Configuration

2NN2H4-33B-R6B



Electrical Specifications

Impedance	50 ohm
Operating Frequency Band	1710 – 2400 MHz 698 – 896 MHz
Polarization	±45°
Total Input Power, maximum	2,000 W @ 50 °C

Electrical Specifications

	R1-R4	R1-R4	Y1-Y8	Y1-Y8	Y1-Y8	Y1-Y8
Frequency Band, MHz	698–806	824–896	1710–1880	1850–1990	1920–2200	2300–2400
RF Port	1-8	1-8	9-24	9-24	9-24	9-24
Gain, dBi	14	14.6	16.2	17.1	17.9	18.4
Beam Centers, Horizontal, degrees	±27	±27	±27	±27	±27	±27
Beamwidth, Horizontal, degrees	41	37	34	33	30	28
Beamwidth, Vertical, degrees	25	22.4	10.2	9.3	8.7	7.7
Beam Tilt, degrees	2–20	2–20	2–12	2–12	2–12	2–12
USLS (First Lobe), dB	16	18	15	16	16	16

2NN2H4-33B-R6B

Front-to-Back Ratio at 180°, dB	27	30	31	34	32	32
Isolation, Cross Polarization, dB	25	25	25	25	25	25
Isolation, Inter-band, dB	25	25	25	25	25	25
VSWR Return loss, dB	1.5 14.0	1.5 14.0	1.5 14.0	1.5 14.0	1.5 14.0	1.5 14.0
PIM, 3rd Order, 2 x 20 W, dBc	-153	-153	-153	-153	-153	-153
Input Power per Port at 50°C, maximum, watts	300	300	250	250	250	250

Mechanical Specifications

Wind Loading @ Velocity, frontal	715.0 N @ 150 km/h (160.7 lbf @ 150 km/h)
Wind Loading @ Velocity, lateral	206.0 N @ 150 km/h (46.3 lbf @ 150 km/h)
Wind Loading @ Velocity, maximum	911.0 N @ 150 km/h (204.8 lbf @ 150 km/h)
Wind Loading @ Velocity, rear	446.0 N @ 150 km/h (100.3 lbf @ 150 km/h)
Wind Speed, maximum	241 km/h (150 mph)

Packaging and Weights

Width, packed	752 mm 29.606 in
Depth, packed	387 mm 15.236 in
Length, packed	1982 mm 78.032 in
Weight, gross	80 kg 176.37 lb

Regulatory Compliance/Certifications

Agency	Classification
CHINA-ROHS	Above maximum concentration value
ISO 9001:2015	Designed, manufactured and/or distributed under this quality management system
ROHS	Compliant/Exempted
UK-ROHS	Compliant/Exempted



Included Products

BSAMNT-4	-	Wide Profile Antenna Downtilt Mounting Kit for 2.4 - 4.5 in (60 - 115 mm) OD round members. Kit contains one scissor top bracket set and one bottom bracket set.
BSAMNT-M4	-	Middle Downtilt Mounting Kit for Long Antennas for 2.4 - 4.5 in (60 - 115 mm) OD round

2NN2H4-33B-R6B

members. Kit contains one scissor bracket set.

* Footnotes

Performance Note Severe environmental conditions may degrade optimum performance

BSAMNT-4



Wide Profile Antenna Downtilt Mounting Kit for 2.4 - 4.5 in (60 - 115 mm) OD round members. Kit contains one scissor top bracket set and one bottom bracket set.

Product Classification

Product Type Downtilt mounting kit

General Specifications

Application Outdoor

Color Silver

Dimensions

Compatible Diameter, maximum 115 mm | 4.528 in

Compatible Diameter, minimum 60 mm | 2.362 in

Weight, net 6.5 kg | 14.33 lb

Material Specifications

Material Type Galvanized steel

Packaging and Weights

Included Brackets | Hardware

Packaging quantity 1

Regulatory Compliance/Certifications

Agency	Classification
CHINA-ROHS	Below maximum concentration value
ISO 9001:2015	Designed, manufactured and/or distributed under this quality management system
REACH-SVHC	Compliant as per SVHC revision on www.commscope.com/ProductCompliance
ROHS	Compliant
UK-ROHS	Compliant



BSAMNT-M4



Middle Downtilt Mounting Kit for Long Antennas for 2.4 - 4.5 in (60 - 115 mm) OD round members. Kit contains one scissor bracket set.

Product Classification

Product Type Downtilt mounting kit

General Specifications

Application Outdoor

Color Silver

Dimensions

Compatible Diameter, maximum 115 mm | 4.528 in

Compatible Diameter, minimum 60 mm | 2.362 in

Weight, net 4.6 kg | 10.141 lb

Material Specifications

Material Type Galvanized steel

Packaging and Weights

Included Brackets | Hardware

Packaging quantity 1

Regulatory Compliance/Certifications

Agency	Classification
CHINA-ROHS	Below maximum concentration value
ISO 9001:2015	Designed, manufactured and/or distributed under this quality management system
REACH-SVHC	Compliant as per SVHC revision on www.commscope.com/ProductCompliance
ROHS	Compliant
UK-ROHS	Compliant

