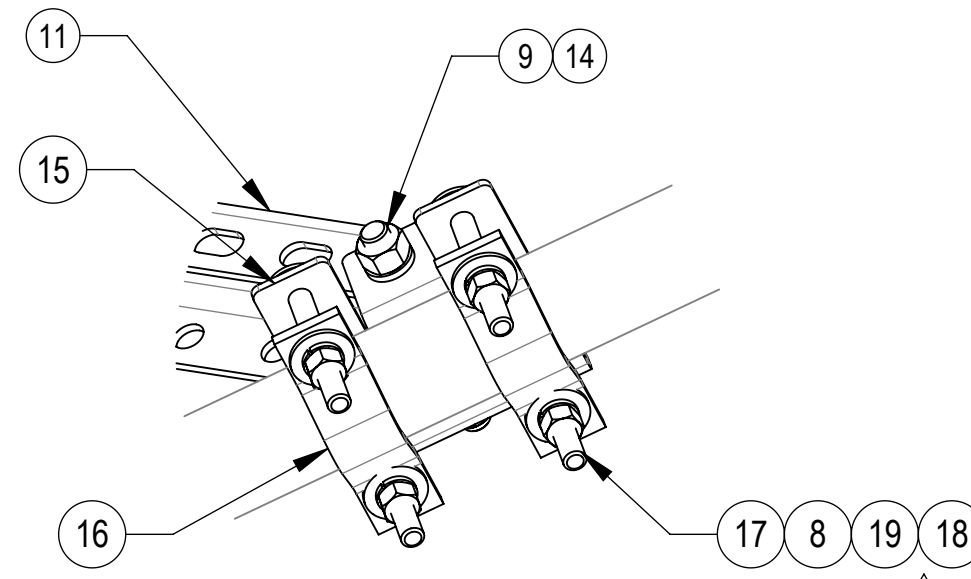
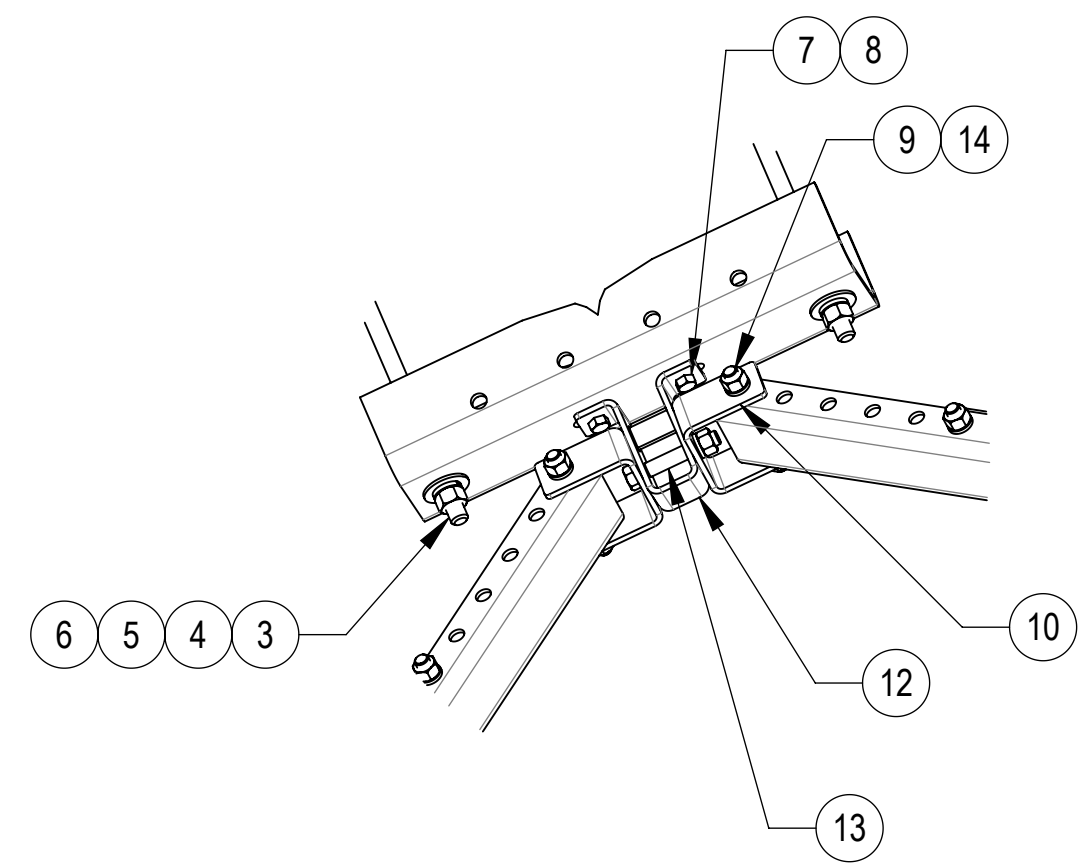
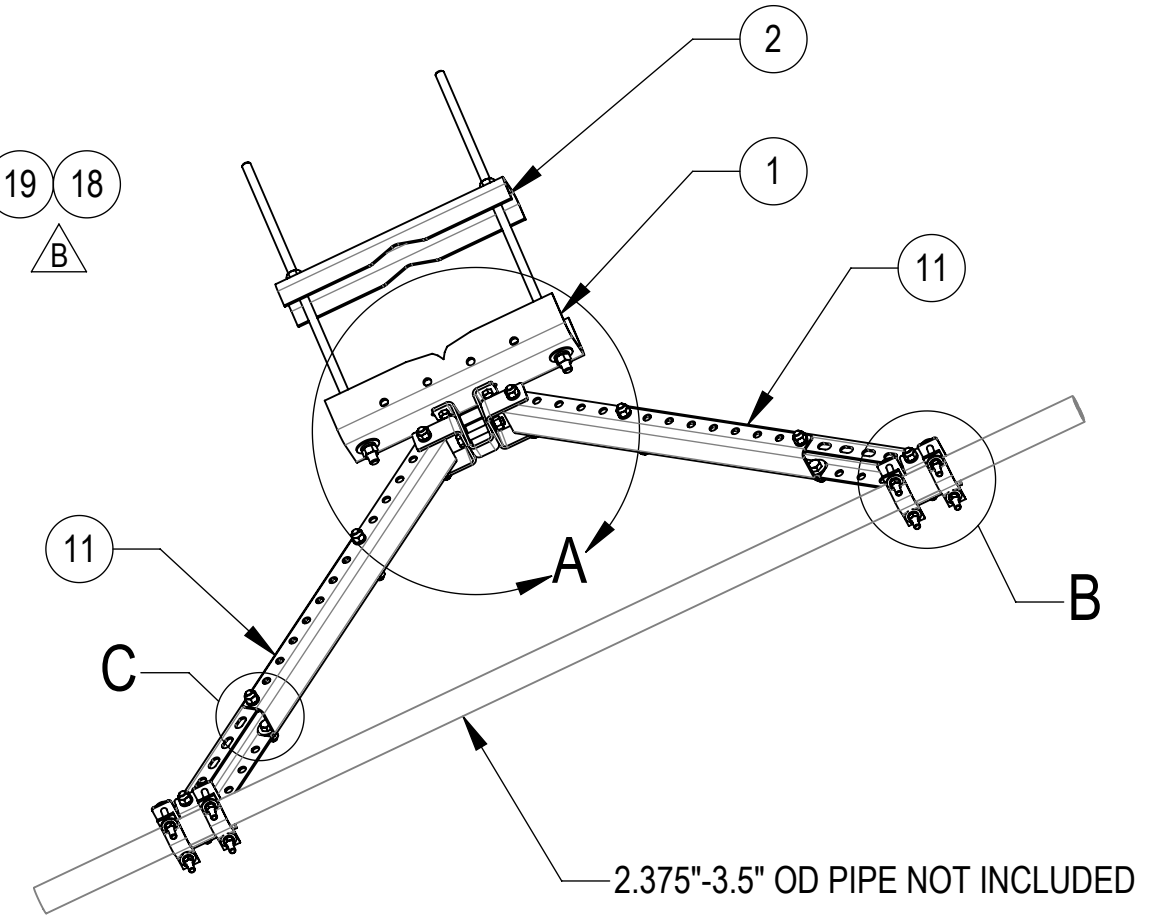


- 1.0 GENERAL NOTES
 1.1 ALL METRIC DIMENSIONS ARE IN BRACKETS [X.X]
 1.2 FOR PATENT INFO: <https://www.cs-pat.com>
 2.0 DESIGN NOTES
 2.1 FITS TOWER LEGS FROM 8" TO 16" OD.
 2.2 ALL DIMENSIONS SHOWN ARE REFERENCE ONLY ALL CONNECTIONS ARE ADJUSTABLE. FINAL INSTALLED APPLICATION DICTATES FINISHED DIMENSIONS.
 3.0 MANUFACTURING/SPECIAL REQUIREMENTS
 3.1 TIGHTEN ALL BOLTS SECURING FLAT PLATES BY THE TURN-OF-NUT METHOD. TIGHTEN ALL U-BOLTS USING TURN-OF-NUT METHOD WITH ATTENTION TO LEAVE EQUAL DISTANCE AND EQUAL FORCE ON EACH LEG OF THE U-BOLT.
 4.0 TEST
 5.0 PACKAGING
 5.1 PACKAGING SHALL MEET COMMSCOPE REQUIREMENTS PER DOCUMENT IS-PL-3005
 5.2 PRINTED DOCUMENT TO BE PLACED INSIDE POLYBAG AND THEN IN SHIPPING CONTAINER
 5.3 EXTRA HARDWARE MAY BE SUPPLIED, BAGGED AND SHIPPED

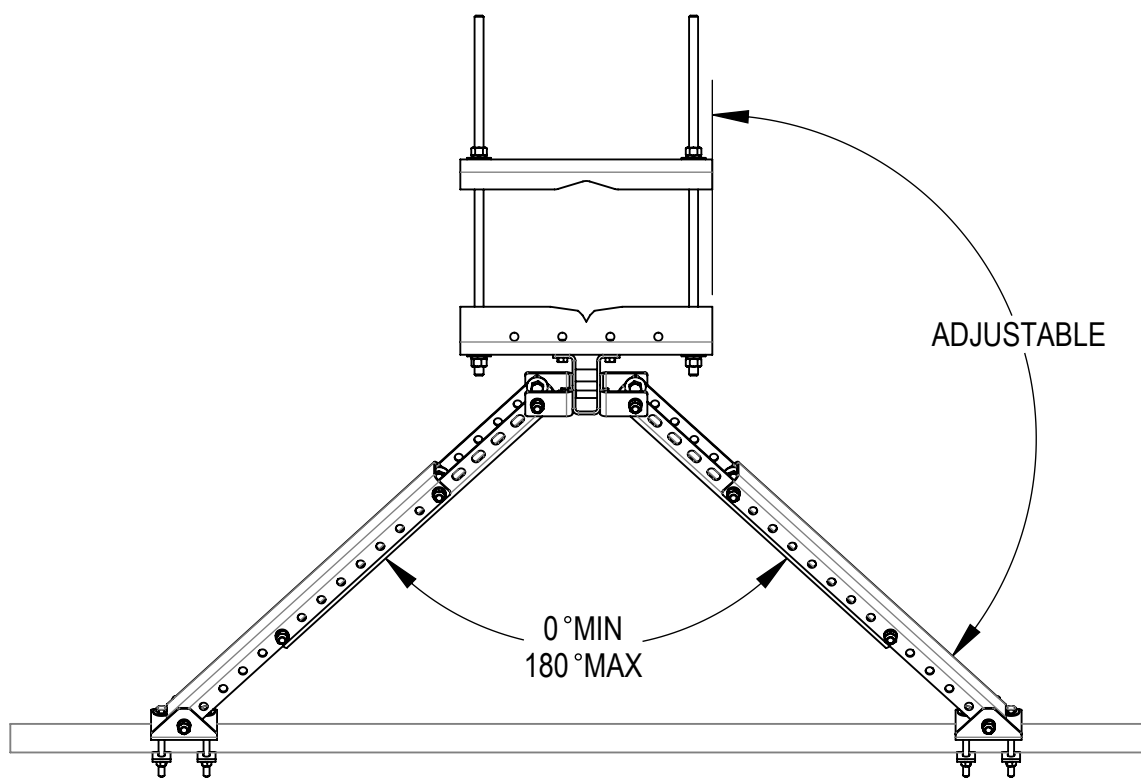
REVISIONS			
REV.	DESCRIPTION	DATE	APPROVED
A	NEW RELEASED.	XZ1045 10/18/2021	15185PC
B	ADDED GN-04 & GWL-04	RY1002 12AUG24	BCROSS 40202158CMO



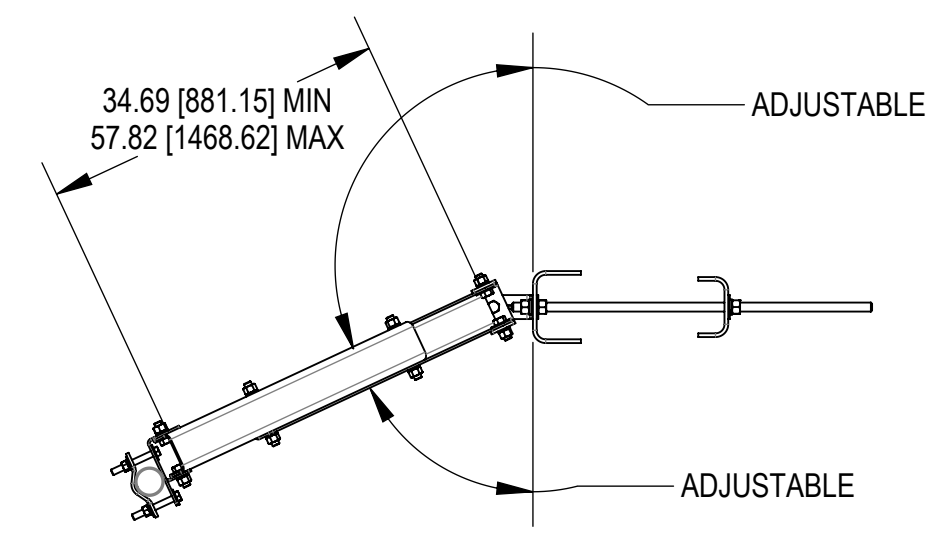
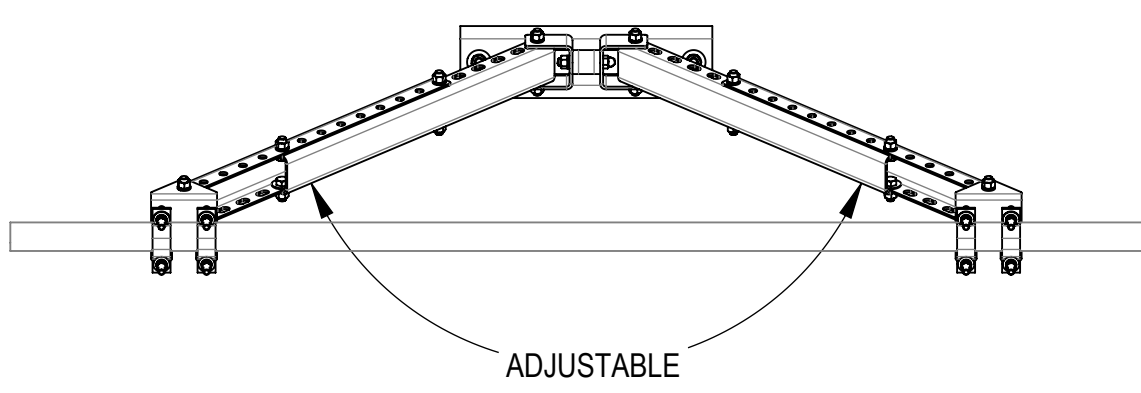
DETAIL B
SCALE 1 : 4



DETAIL A
SCALE 1 : 8

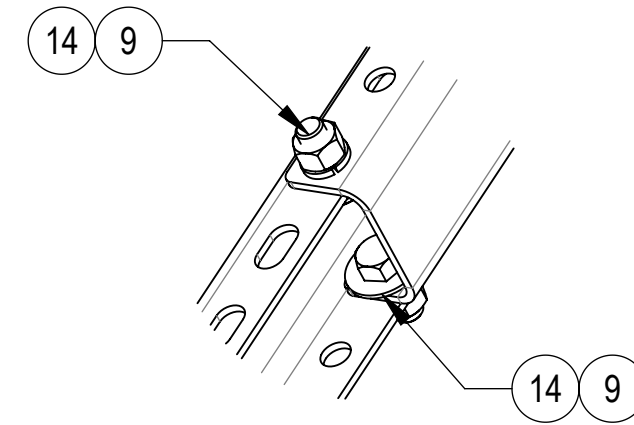


UP TO ±90° AZIMUTH
ADJUSTMENT OFF APEX



COMPONENT PART NUMBERS PROVIDED FOR ASSEMBLY PURPOSES;
 INDIVIDUAL COMPONENTS MAY BE SHIPPED AS PARTS WITHIN AN INCLUDED KIT.

ITEM	PART NO.	DESCRIPTION	QTY.	WEIGHT	NOTE NO.
1	SMU201601	LARGE SADDLE MOUNT, 16" TOWER LEG	1	22.42 LBS	
2	SMU201602	CLAMP PLATE	1	15.48 LBS	
3	MT38430B7	3/4" X 30" GALV THREADED ROD, GRADE B7	2	3.73 LBS	
4	GWf-06	3/4" GALV FLAT WASHER	6	0.10 LBS	
5	GWL-06	3/4" GALV LOCK WASHER	4	0.04 LBS	
6	GN-06	3/4" GALV HEX NUT	6	0.15 LBS	
7	GB-04145	1/2" X 1-1/2" GALV BOLT KIT	2	0.13 LBS	
8	GWf-04	1/2" GALV FLAT WASHER	18	0.04 LBS	
9	GB-05145	5/8" X 1-1/2" GALV BOLT KIT	16	0.22 LBS	
10	VSRC-2000	BRACKET, PIVOT	2	1.64 LBS	
11	MCpm-2100	ARM, 31.5" SUPPORT	4	10.72 LBS	
12	VSRC-1000	BRACKET, PIVOT ATTACHMENT WELD ASSY	1	2.06 LBS	
13	GB-05365	5/8" X 3-3/4" GALV BOLT KIT	1	0.41 LBS	
14	GWf-05	5/8" GALV FLAT WASHER, 1.7OD	16	0.06 LBS	
15	VSRC-3000	CHANNEL MOUNT FOR VSRC	2	2.14 LBS	
16	ACP10	1.5" - 3.5" O.D. CLAMP HALF	4	0.61 LBS	
17	1204FTB	1/2" X 4" FULL THREAD GALV. BOLT	8	0.26 LBS	
18	GWL-04	1/2" GALV LOCK WASHER	8	0.01 LBS	
19	GN-04	1/2" GALV HEX NUT	8	0.04 LBS	



DETAIL C
SCALE 1 : 4

DENSITY	135.45	lbs/in ³
MASS	478.59	lbs
VOLUME	5109.49	in ³
SURFACE AREA		in ²
HEIGHT		
LENGTH		
WIDTH		

© 2024 CommScope, Inc. Confidential

COMMSCOPE, INC. OF NORTH CAROLINA

TOLERANCES
 1 PLACE .X[X] ± 0.25[6.4] 3 PLACE .XXX[X] ± 0.060[1.5]
 2 PLACE .XX[X] ± 0.12[3.0] ANGLES ± 2°

SAP MATERIAL MASTER
VSRC-TL-B

FINISH
 MATERIAL

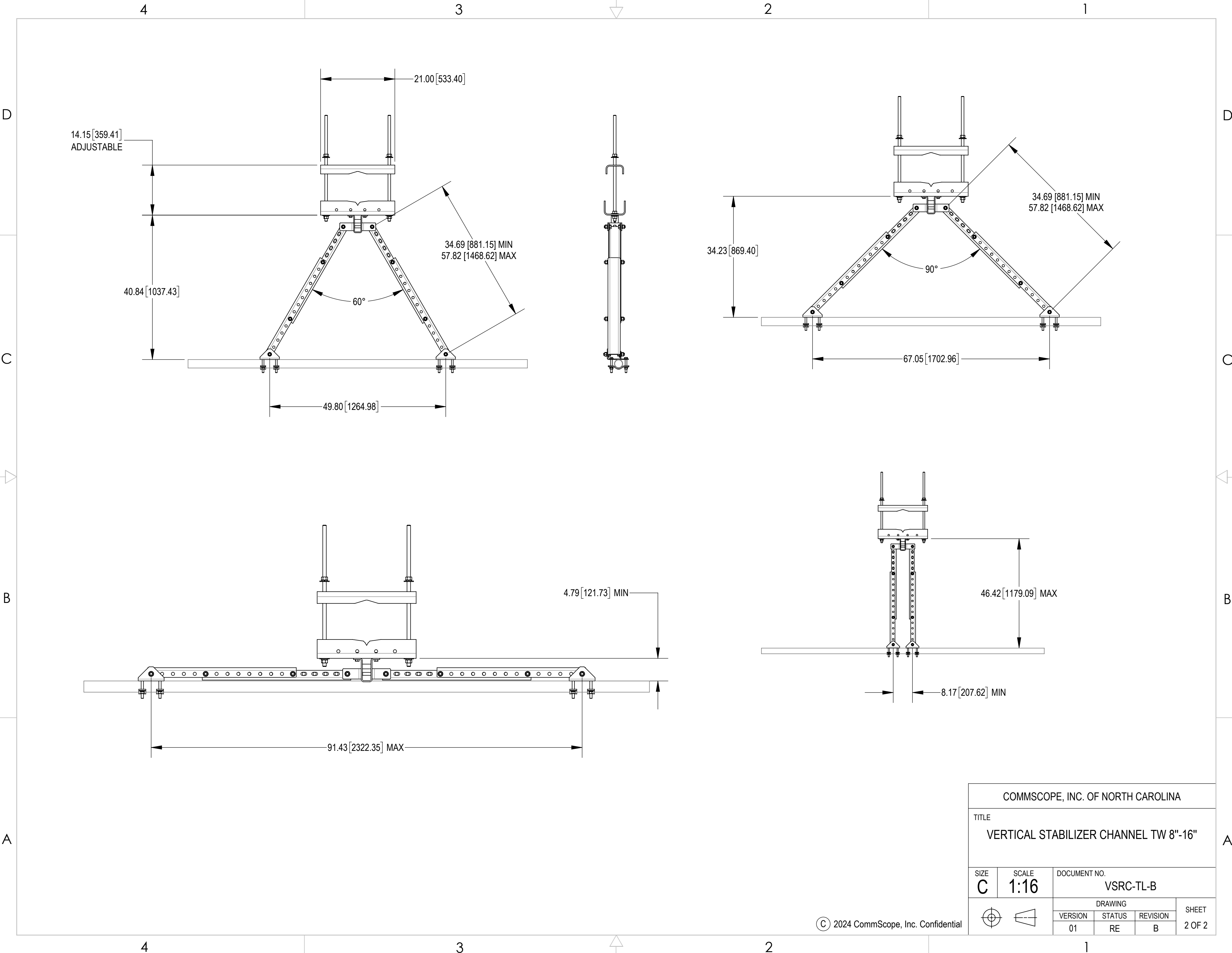
NAME	DATE	TITLE
CE XZ1054	10/18/2021	VERTICAL STABILIZER CHANNEL TW 8"-16"
RW RY1002	08/13/2024	
AD BCROSS	08/21/2024	
RE RY1002	09/05/2024	

SCALE **1:16** DOCUMENT NO. **VSRC-TL-B**

ECN 40202158CMO

SIZE	Auth Group	INSL	MODEL	DRAWING			SHEET	
C			VERSION	STATUS	REVISION	VERSION	STATUS	REVISION
			01	RE	B	01	RE	B

SHEET 1 OF 2



COMMSCOPE, INC. OF NORTH CAROLINA				
TITLE VERTICAL STABILIZER CHANNEL TW 8"-16"				
SIZE C	SCALE 1:16	DOCUMENT NO. VSRC-TL-B		
		DRAWING		SHEET
		VERSION	STATUS	REVISION
		01	RE	B
				2 OF 2

© 2024 CommScope, Inc. Confidential