

- 1.0 GENERAL NOTES
- 1.1 ALL METRIC DIMENSIONS ARE IN BRACKETS [X. X]
- 1.2 FOR PATENT INFO: <https://www.cs-pat.com>

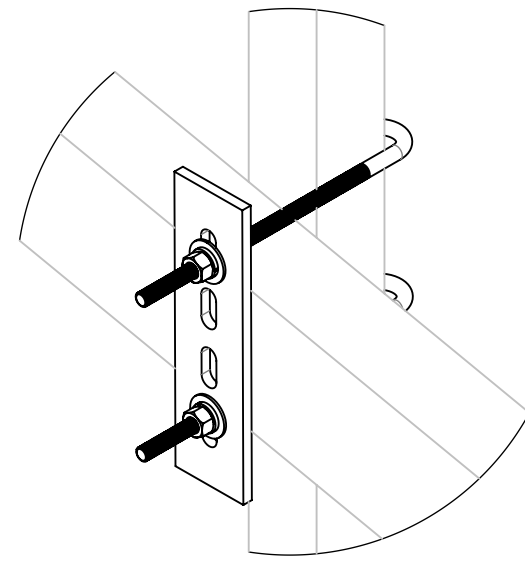
- 2.0 DESIGN NOTES
- 3.0 MANUFACTURING/SPECIAL REQUIREMENTS

3.1 TIGHTEN ALL BOLTS SECURING FLAT PLATES BY THE TURN-OF-NUT METHOD. TIGHTEN ALL U-BOLTS USING TURN-OF-NUT METHOD WITH ATTENTION TO LEAVE EQUAL DISTANCE AND EQUAL FORCE ON EACH LEG OF THE U-BOLT.

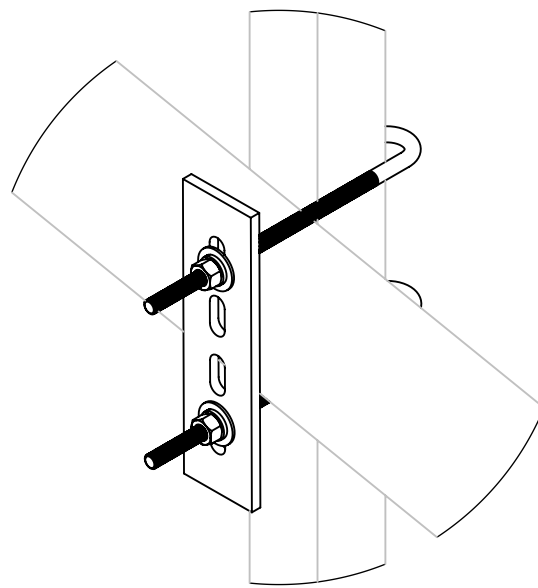
- 4.0 TEST
- 5.0 PACKAGING

5.1 PACKAGING SHALL MEET COMMScope REQUIREMENTS PER DOCUMENT IS-PL-3005  
 5.2 PRINTED DOCUMENT TO BE PLACED INSIDE POLYBAG AND THEN IN SHIPPING CONTAINER  
 5.3 EXTRA HARDWARE MAY BE SUPPLIED, BAGGED AND SHIPPED

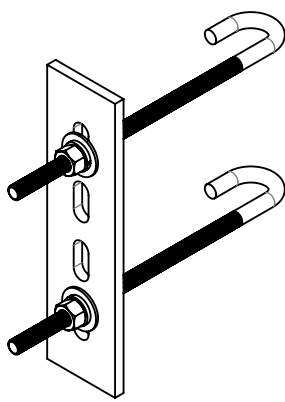
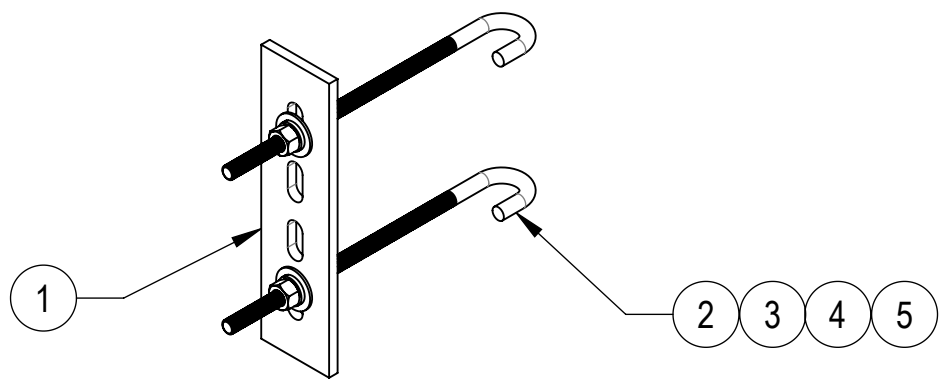
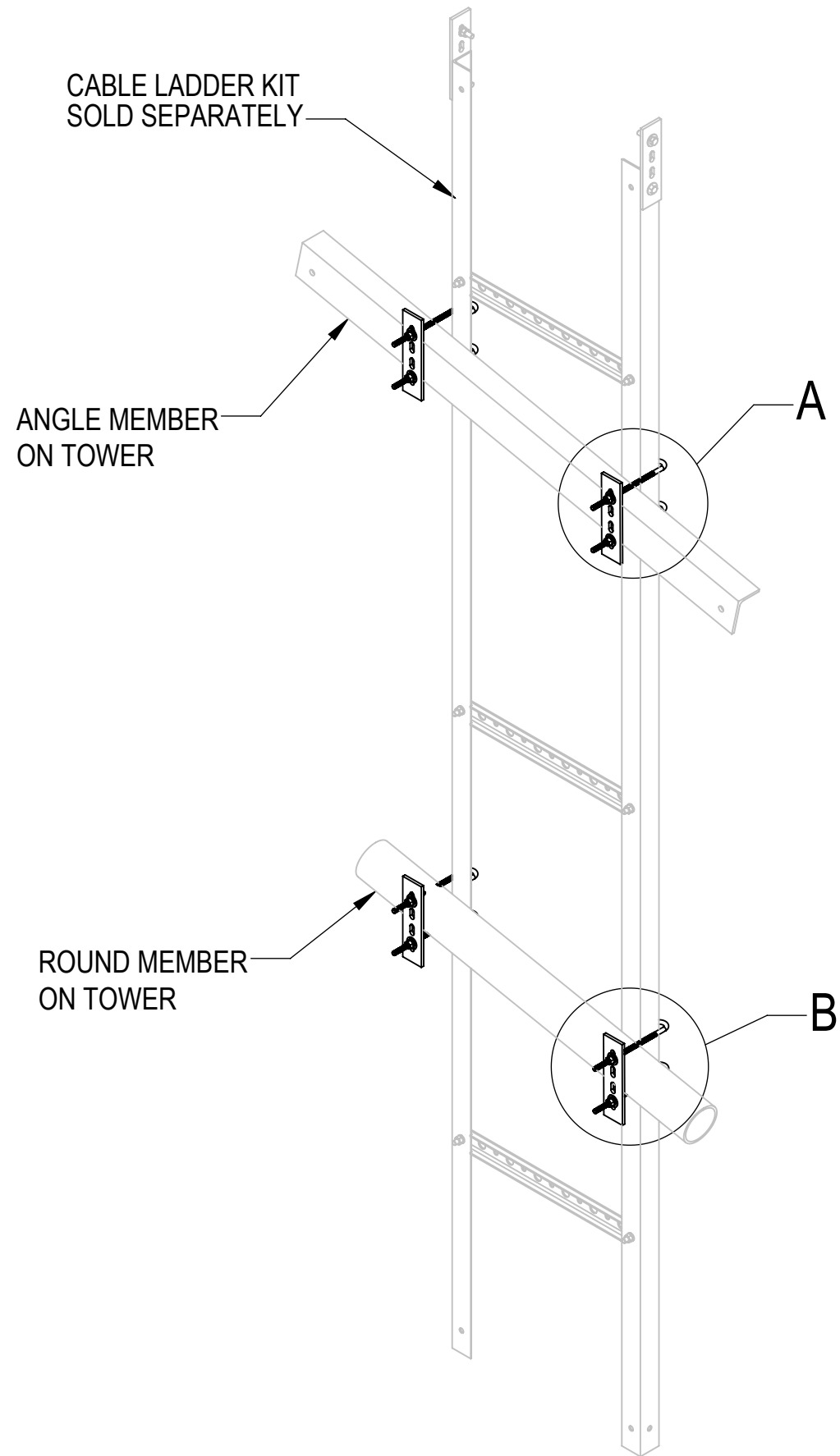
REVISIONS			
REV.	DESCRIPTION	DATE	APPROVED
D	REMOVED HKCLU.01	ACG 01JAN05	TP
E	REDRAW IN SW	YX1027 12SEP24	BA1025 40204470CMO



DETAIL A  
ANGLE MEMBER



DETAIL B  
ROUND MEMBER



COMPONENT PART NUMBERS PROVIDED FOR ASSEMBLY PURPOSES;  
 INDIVIDUAL COMPONENTS MAY BE SHIPPED AS PARTS WITHIN AN INCLUDED KIT.

ITEM NO.	PART NUMBER	DESCRIPTION	QTY.	WEIGHT	NOTE NO.
1	HKCLU02	BACKING PLATE	2	0.95 LBS	
2	GJB0380	8" GALV J-BOLT KIT	4	0.23 LBS	
3	GWF-03	3/8" GALV FLAT WASHER	4	0.01 LBS	
4	GWL-03	3/8" GALV LOCK WASHER	4	0.01 LBS	
5	GN-03	3/8" GALV HEX NUT	4	0.02 LBS	

DENSITY	73.18	lbs/in <sup>3</sup>
MASS	73.18	lbs
VOLUME	317.66	in <sup>3</sup>
SURFACE AREA	4042.03	in <sup>2</sup>
HEIGHT	7.5"	
LENGTH	23.4"	
WIDTH	8.25"	

<b>COMMScope, INC. OF NORTH CAROLINA</b>			
TOLERANCES		SAP MATERIAL MASTER	
1 PLACE .X[X] ± 0.06[1.5]	3 PLACE .XXX[X] ± 0.010[0.3]	<b>HK-CL-U</b>	
2 PLACE .XX[X] ± 0.03[0.8]	ANGLES ± 2°		
FINISH		MATERIAL	
UNLESS OTHERWISE SPECIFIED DIMENSIONS ARE IN INCHES INTERPRET PER ANSI Y 14.5M-1994	NAME	DATE	TITLE
	CE ACG	14JAN05	<b>UNIVERSAL LADDER CLAMP KIT</b>
	RW YX1027	09/17/2024	
	AD YMENG	09/17/2024	
	RE YMENG	09/17/2024	
ECN 40204470CMO			
SCALE	DOCUMENT NO.	<b>HK-CL-U</b>	
1:1			
SIZE	Auth Group	INSL	MODEL
C			
VERSION	STATUS	REVISION	DRAWING
01	RE	H	01 RE E
			SHEET
			1 OF 1