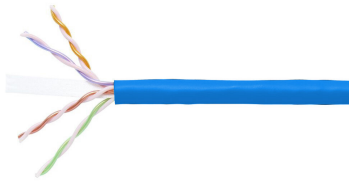


UTG760245085 | 2071E-UTG BLU C6 4/23 U/UTP W1000



GigaSPEED XL® 2071E-UTG ETL Verified Category 6 U/UTP Cable, plenum, blue jacket, 4 pair count, 1000 ft (305 m) length, WE TOTE® box

Product Classification

Regional Availability	Asia Australia/New Zealand EMEA Latin America North America
Portfolio	SYSTIMAX®
Product Type	Twisted pair cable
Product Brand	GigaSPEED XL®

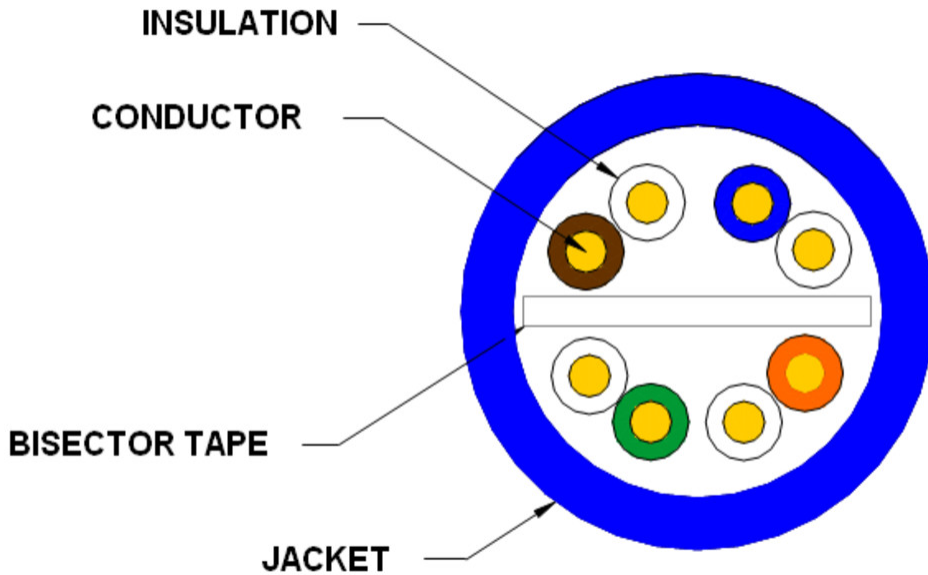
General Specifications

Product Number	2071E-UTG
ANSI/TIA Category	6
Cable Component Type	Horizontal
Cable Type	U/UTP (unshielded)
Conductor Type, singles	Solid
Conductors, quantity	8
Jacket Color	Blue
Pairs, quantity	4
Separator Type	Bisector
Transmission Standards	ANSI/TIA-568.2-D CENELEC EN 50288-6-1 ISO/IEC 11801 Class E UTG-10

Dimensions

Cable Length	304.8 m 1000 ft
Diameter Over Insulated Conductor	1.016 mm 0.04 in
Diameter Over Jacket, nominal	5.74 mm 0.226 in
Jacket Thickness	0.559 mm 0.022 in
Conductor Gauge, singles	23 AWG

Cross Section Drawing



Electrical Specifications

dc Resistance Unbalance, maximum	5 %
dc Resistance, maximum	7.61 ohms/100 m 2.32 ohms/100 ft
Dielectric Strength, minimum	1500 Vac 2500 Vdc
Mutual Capacitance at Frequency	5.6 nF/100 m @ 1 kHz
Nominal Velocity of Propagation (NVP)	74 %
Operating Frequency, maximum	300 MHz
Operating Voltage, maximum	80 V
Remote Powering	Fully complies with the recommendations set forth by IEEE 802.3bt (Type 4) for the safe delivery of power over LAN cable when installed according to ISO/IEC 14763-2, CENELEC EN 50174-1, CENELEC EN 50174-2 or TIA TSB-184-A

Material Specifications

Conductor Material	Bare copper
Insulation Material	FEP Polyolefin
Jacket Material	PVC
Separator Material	Flame retardant polyolefin

Mechanical Specifications

UTG760245085 | 2071E-UTG BLU C6 4/23 U/UTP W1000

Pulling Tension, maximum 11.34 kg | 25 lb

Environmental Specifications

Installation temperature 0 °C to +60 °C (+32 °F to +140 °F)

Operating Temperature -20 °C to +60 °C (-4 °F to +140 °F)

Environmental Space Plenum

Temperature Rating, UL 75 °C | 167 °F

Flame Test Method CMP/FT6

Smoke Test Method CMP/FT6

Packaging and Weights

Cable weight 43.157 kg/km | 29 lb/kft

Packaging Type WE TOTE® box

Regulatory Compliance/Certifications

Agency

ISO 9001:2015

Classification

Designed, manufactured and/or distributed under this quality management system