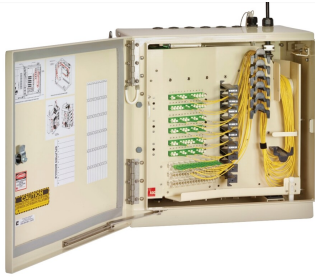


# FD3-MM288J00LABCAA



IFDH 3000 Indoor Fiber Distribution Hub, 288F, SC/APC, riser I/O LT 50' stub, 12F 100' stub feeder cable

## Product Classification

<b>Regional Availability</b>	North America
<b>Product Type</b>	Fiber distribution hub
<b>Product Series</b>	IFDH 3000

## General Specifications

<b>Functionality</b>	Patching   Splicing
<b>Access</b>	Front
<b>Adapters, quantity</b>	288
<b>Cable Type</b>	Pigtails - Stranded
<b>Color</b>	Putty white
<b>Distribution Cables, quantity</b>	2
<b>Fibers per Distribution Cable, quantity</b>	144
<b>Fibers per Feeder Cable, quantity</b>	12
<b>Front Door Type</b>	Single hinged
<b>Interface</b>	SC/APC
<b>Mounting</b>	Wall
<b>Port, quantity</b>	288
<b>Splitter Slots, quantity</b>	18

## Dimensions

<b>Height</b>	839 mm   33.032 in
<b>Width</b>	600 mm   23.622 in
<b>Depth</b>	427 mm   16.811 in
<b>Cable Length</b>	15.24 m   50 ft
<b>Enclosure Size</b>	Medium

# FD3-MM288J00LABCAA

---

## Material Specifications

<b>Finish</b>	Powder coated
<b>Material Type</b>	Aluminum

## Optical Specifications

<b>Fiber Mode</b>	Singlemode
-------------------	------------

## Environmental Specifications

<b>Environmental Space</b>	Indoor
----------------------------	--------

## Packaging and Weights

<b>Packaging quantity</b>	1
---------------------------	---

## Regulatory Compliance/Certifications

<b>Agency</b>	<b>Classification</b>
CHINA-ROHS	Above maximum concentration value
REACH-SVHC	Compliant as per SVHC revision on <a href="http://www.commscope.com/ProductCompliance">www.commscope.com/ProductCompliance</a>
ROHS	Compliant/Exempted
UK-ROHS	Compliant/Exempted

