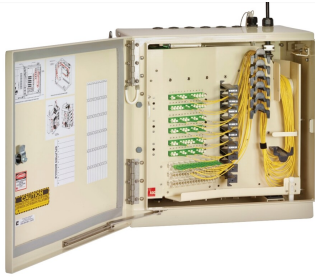


FD3-MN432J00V00EOC



IFDH 3000 Indoor Fiber Distribution Hub, 432F, SC/APC, loose tube /stranded pigtails, spliced input/dist., 48FF

Product Classification

Regional Availability	North America
Product Type	Fiber distribution hub
Product Series	IFDH 3000

General Specifications

Functionality	Patching Splicing
Access	Front
Adapters, quantity	432
Cable Type	Pigtails - Stranded
Color	Putty white
Distribution Cables, quantity	36
Fibers per Distribution Cable, quantity	12
Fibers per Feeder Cable, quantity	48
Front Door Type	Single hinged
Interface	SC/APC
Mounting	Wall
Port, quantity	432
Splitter Slots, quantity	18

Dimensions

Height	990.6 mm 39 in
Width	358.1 mm 14.098 in
Depth	368.3 mm 14.5 in
Cable Length	30.48 m 100 ft
Enclosure Size	Large

FD3-MN432J00V00EOC

Material Specifications

Finish	Powder coated
Material Type	Aluminum

Optical Specifications

Fiber Mode	Singlemode
-------------------	------------

Environmental Specifications

Environmental Space	Indoor
----------------------------	--------

Packaging and Weights

Packaging quantity	1
---------------------------	---

Regulatory Compliance/Certifications

Agency	Classification
CHINA-ROHS	Above maximum concentration value
REACH-SVHC	Compliant as per SVHC revision on www.commscope.com/ProductCompliance
ROHS	Compliant/Exempted
UK-ROHS	Compliant/Exempted

