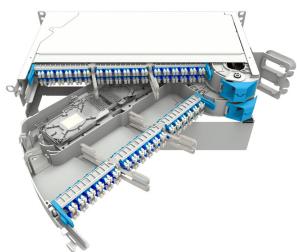


760238078 | MFPS-JED-P-SIL1-144



MFPS Fiber Optic panel, 2RU, 72 fibers/RU, splice/patch, SMOUV/front patch cords orientation to the right, 144 LC/UPC, grade C

- Compatible with most common cable types: loose tube, central core, slotted core
- Suitable for cabinets and POP locations
- Various available panel heights to support termination counts from 12 to 288
- Simple wrap-around design for easy fiber routing
- Supports patch cord diameters of 1.2 to 2.4mm (XD-series require the usage of 1.2mm patch cords)

Product Classification

Regional Availability	EMEA
Portfolio	CommScope®
Product Type	Fiber patch/splice panel
Product Series	MFPS

General Specifications

Functionality	Patching Splicing
Cable Exit Location	Rear Side
Color	Gray
Door Type, front	Compression latch Hinged
Growth Configuration	Fully loaded
Interface, front	LC/UPC
Patch Cord Entry Location	Front, right side
Patch Cord Routing	Right sided
Pigtail Assembly Type	Color-coded, 900 µm
Pigtails Included, quantity	144
Rack Type	EIA 19 in ETSI 600 mm
Rack Units	2
Shelf Movement	Hinged
Splicing Type	Heat shrink, single fiber fusion
Total Ports, quantity	144
Transmission Standards	ETSI EN 300 019-1-3 IEC 61300-3-34

760238078 | MFPS-JED-P-SIL1-144

Dimensions

Height	88.9 mm 3.5 in
Width	482.6 mm 19 in
Depth	279.91 mm 11.02 in

Port Configuration

MFPS Capacities		48		72	96
Connector Type		SC	LC	LC	LC Adapter Pack
19 inch	1HU	48	48	72	96
	2HU	96	96	144	192
	2.8 HU	144	144	216	288

Ordering Tree



Material Specifications

Finish Powder coated

Material Type Ethylene-propylene (EP) | Polyethylene terephthalate (PET)

Optical Specifications

Fiber Mode Singlemode

Fiber Type G.657.A1

Performance Grade Standard C grade

Environmental Specifications

Operating Temperature -40 °C to +70 °C (-40 °F to +158 °F)

Storage Temperature -20 °C to +85 °C (-4 °F to +176 °F)

Flammability Rating UL 94 V-0

Packaging and Weights

Included Mounting hardware | One cable termination kit

Packaging quantity 1

Regulatory Compliance/Certifications

Agency	Classification
CHINA-ROHS	Above maximum concentration value
ISO 9001:2015	Designed, manufactured and/or distributed under this quality management system
ROHS	Compliant/Exempted
UK-ROHS	Compliant/Exempted



* Footnotes

Performance Grade	Guarantee to meet IEC 61755-1 Random Mating requirement
--------------------------	---