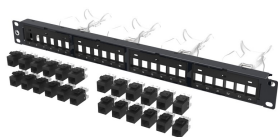


760242562 | CPP-6-UDDM-SL-1U-24



Unshielded Discrete Distribution Module Panel, Cat 6, SL, 1U, 24 port, Black

Product Classification

Regional Availability	Australia/New Zealand India
Portfolio	CommScope®
Product Type	RJ45 patch panel

General Specifications

ANSI/TIA Category	6
Cable Type	Unshielded
Color	Black
Growth Configuration	Fully loaded
Panel Style	Straight
Rack Type	EIA 19 in
Rack Units	1
Total Ports, quantity	24
Transmission Standards	ANSI/TIA-568-C.2 ISO/IEC 11801 Class E

Dimensions

Height	44.45 mm 1.75 in
Width	482.6 mm 19 in
Depth, with cable management	119.38 mm 4.7 in
Compatible Diameter Over Dielectric, maximum	1.168 mm 0.046 in
Compatible Diameter Over Dielectric, minimum	0.762 mm 0.03 in

Material Specifications

Material Type	High-impact, flame retardant, thermoplastic Powder-coated steel
----------------------	---

Environmental Specifications

760242562 | CPP-6-UDDM-SL-1U-24

Operating Temperature	-10 °C to +60 °C (+14 °F to +140 °F)
Storage Temperature	-40 °C to +70 °C (-40 °F to +158 °F)
Flammability Rating	UL 94 V-0
Safety Standard	RCM UL cUL

Packaging and Weights

Included	Modular jacks (24)
Packaging quantity	1

Regulatory Compliance/Certifications

Agency	Classification
CHINA-ROHS	Below maximum concentration value
ISO 9001:2015	Designed, manufactured and/or distributed under this quality management system
REACH-SVHC	Compliant as per SVHC revision on www.commscope.com/ProductCompliance
ROHS	Compliant
UK-ROHS	Compliant

