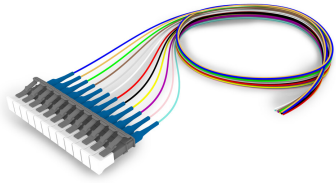


FAWL6UCOC

Base Product



Singlemode LC/UPC Keyed Slate to Unconnectorized, Fiber Pigtail, 0.9 mm Tight Buffer, 12-Fiber Kit Blue - Aqua (1-12)

Product Classification

| | |
|------------------------------|--|
| Regional Availability | Asia Australia/New Zealand Europe Latin America Middle East /Africa North America |
| Portfolio | CommScope® |
| Product Type | Fiber pigtail, unjacketed |
| Product Brand | SYSTIMAX InstaPATCH® 360 |
| Product Series | FAW |
| Ordering Note | For lengths greater than 999 ft (304 m), orders must be in meters Minimum length may vary based on cable configuration |

General Specifications

| | |
|---------------------------------------|--------|
| Color, boot A | Blue |
| Color, connector A | Slate |
| Interface, Connector A | LC/UPC |
| Interface Feature, connector A | Keyed |
| Total Fibers, quantity | 12 |

Dimensions

| | |
|---|--------|
| Cable Assembly Length Range (m) | 1 – 20 |
| Cable Assembly Length Range (ft) | 1 – 66 |

Ordering Tree

FAWL6UCOC



Mechanical Specifications

Cable Retention Strength, maximum 1.00 lb @ 0 ° | 1.00 lb @ 90 °

Optical Specifications

Fiber Mode Singlemode

Fiber Type G.652.D | G.657.A1, TeraSPEED®

Environmental Specifications

Operating Temperature -10 °C to +60 °C (+14 °F to +140 °F)

Environmental Space Unrated

Regulatory Compliance/Certifications

| Agency | Classification |
|---------------|--|
| ISO 9001:2015 | Designed, manufactured and/or distributed under this quality management system |

Included Products

- 760102962 SFC-LCR-09-KSL – TeraSPEED® Behind The Wall Keyed LC Connector for 0.9 mm Fiber, Singlemode, slate
- X-TB-8W – TeraSPEED® 900µm Tight Buffered Fiber

760102962 | SFC-LCR-09-KSL



TeraSPEED® Behind The Wall Keyed LC Connector for 0.9 mm Fiber, Singlemode, slate

Product Classification

| | |
|------------------------------|---|
| Regional Availability | Asia Australia/New Zealand EMEA Latin America North America |
| Portfolio | CommScope® |
| Product Type | Fiber connector |
| Product Brand | TeraSPEED® |

General Specifications

| | |
|--------------------------|--------------|
| Body Style | BTW |
| Color | Slate |
| Ferrule Geometry | Pre-radiused |
| Interface | LC/UPC |
| Interface Feature | Keyed |

Dimensions

| | |
|----------------------------------|-------------------|
| Length | 52 mm 2.047 in |
| Compatible Cable Diameter | 0.9 mm 0.035 in |

Material Specifications

| | |
|-------------------------|----------|
| Ferrule Material | Zirconia |
|-------------------------|----------|

Mechanical Specifications

| | |
|--|---------------|
| Cable Retention Strength, maximum | 1.00 lb @ 0 ° |
|--|---------------|

Optical Specifications

| | |
|---|--|
| Fiber Type | G.652.D and G.657.A1, TeraSPEED® OS2 |
| Insertion Loss Change, mating | 0.3 dB |
| Optical Components Standard | ANSI/TIA-568-C.3 |
| Insertion Loss Change, temperature | 0.3 dB |
| Insertion Loss, typical | 0.2 dB |
| Return Loss, minimum | 50 dB |

Packaging and Weights

Packaging quantity 1

Regulatory Compliance/Certifications

Agency

Classification

ISO 9001:2015

Designed, manufactured and/or distributed under this quality management system

* Footnotes

Insertion Loss Change, mating TIA-568: Maximum insertion loss change after 500 matings

Insertion Loss Change, temperature Maximum insertion loss change from -10 °C to +60 °C (+14 °F to +140 °F)

X-TB-8W

TeraSPEED® 900µm Tight Buffered Fiber

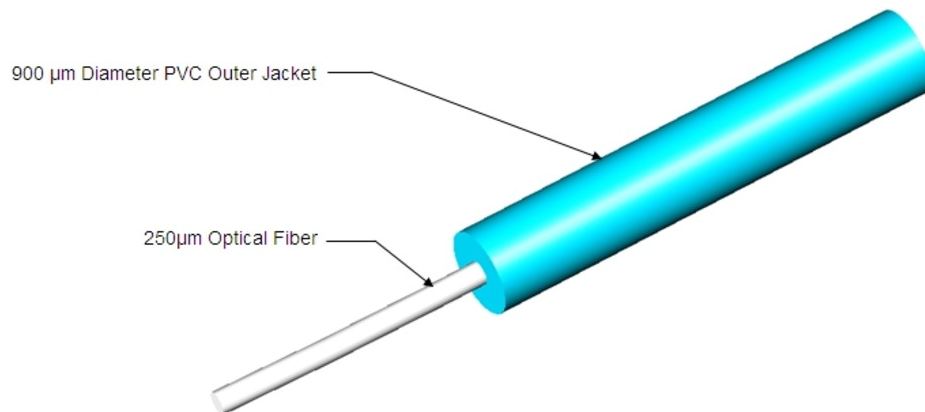
Product Classification

| | |
|------------------------------|---|
| Regional Availability | Asia Australia/New Zealand EMEA Latin America North America |
| Portfolio | CommScope® |
| Product Type | Fiber indoor cable |

General Specifications

| | |
|----------------------|--------|
| Core Diameter | 8.3 µm |
|----------------------|--------|

Representative Image



Regulatory Compliance/Certifications

| Agency | Classification |
|---------------|--|
| ISO 9001:2015 | Designed, manufactured and/or distributed under this quality management system |