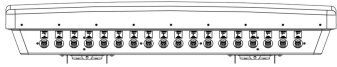


# 2X9NPA2010F



18-port multibeam antenna, 18x 1710–2170 MHz, 2x9 Beam Panel Antenna for Event Coverage.

18-port multibeam antenna, 18x 1710–2170 MHz, 2x9 Beam Panel Antenna for Event Coverage. Two rows of beams spaced 8° in elevation. One set of beams 4° up (+45°) and one set of beams 4° down (-45°) and 5° in azimuth. Upper and lower beam sets displaced in azimuth by  $\pm 2.5^\circ$  from boresight.

**OBSOLETE**

This product was discontinued on: November 30, 2023

## General Specifications

<b>Antenna Type</b>	Multibeam
<b>Band</b>	Single band
<b>Color</b>	Light Gray (RAL 7035)
<b>Grounding Type</b>	RF connector inner conductor and body grounded to reflector and mounting bracket
<b>Performance Note</b>	Outdoor usage
<b>Radome Material</b>	ASA, UV stabilized
<b>RF Connector Interface</b>	7-16 DIN Female
<b>RF Connector Location</b>	Bottom
<b>RF Connector Quantity, high band</b>	18
<b>RF Connector Quantity, mid band</b>	0
<b>RF Connector Quantity, low band</b>	0
<b>RF Connector Quantity, total</b>	18

## Dimensions

<b>Width</b>	1486 mm   58.504 in
<b>Depth</b>	283 mm   11.142 in
<b>Length</b>	1771 mm   69.724 in
<b>Net Weight, without mounting kit</b>	140 kg   308.647 lb

## Electrical Specifications

<b>Impedance</b>	50 ohm
------------------	--------

# 2X9NPA2010F

<b>Operating Frequency Band</b>	1710 – 2170 MHz
<b>Polarization</b>	Single Slant Polarization

## Electrical Specifications

<b>Frequency Band, MHz</b>	<b>1710–1920</b>	<b>1920–2170</b>
<b>Gain, dBi</b>	25	27
<b>Beamwidth, Horizontal, degrees</b>	6	5
<b>Beamwidth, Vertical, degrees</b>	7.2	5.8
<b>USLS (First Lobe), dB</b>	18	18
<b>Front-to-Back Ratio at 180°, dB</b>	30	30
<b>Isolation, Cross Polarization, dB</b>	16	16
<b>VSWR   Return loss, dB</b>	1.43   15.0	1.43   15.0
<b>PIM, 3rd Order, 2 x 20 W, dBc</b>	-150	-150
<b>Input Power per Port, maximum, watts</b>	300	300

## Mechanical Specifications

<b>Mechanical Tilt Range</b>	0°–12°
<b>Wind Loading @ Velocity, frontal</b>	3,222.0 N @ 150 km/h (724.3 lbf @ 150 km/h)
<b>Wind Loading @ Velocity, lateral</b>	174.0 N @ 150 km/h (39.1 lbf @ 150 km/h)
<b>Wind Loading @ Velocity, rear</b>	3,123.0 N @ 150 km/h (702.1 lbf @ 150 km/h)
<b>Wind Speed, maximum</b>	160 km/h (99 mph)

## Packaging and Weights

<b>Width, packed</b>	1758 mm   69.213 in
<b>Depth, packed</b>	640 mm   25.197 in
<b>Length, packed</b>	1998 mm   78.661 in
<b>Weight, gross</b>	188 kg   414.469 lb

## Regulatory Compliance/Certifications

<b>Agency</b>	<b>Classification</b>
CE	Compliant with the relevant CE product directives
CHINA-ROHS	Below maximum concentration value
ISO 9001:2015	Designed, manufactured and/or distributed under this quality management system
REACH-SVHC	Compliant as per SVHC revision on <a href="http://www.commscope.com/ProductCompliance">www.commscope.com/ProductCompliance</a>

# 2X9NPA2010F

---

ROHS Compliant

UK-ROHS Compliant



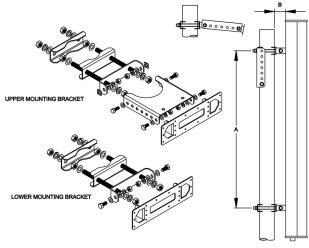
## Included Products

T-041-GL-E – Adjustable Tilt Pipe Mounting Kit for 2.0"-4.5" (60-115mm) OD round members for panel antennas. Includes 2 clamp sets.

## \* Footnotes

**Performance Note** Severe environmental conditions may degrade optimum performance

# T-041-GL-E



Adjustable Tilt Pipe Mounting Kit for 2.0"-4.5" (60-115mm) OD round members for panel antennas. Includes 2 clamp sets.

## Product Classification

**Product Type** Adjustable tilt mounting kit

## General Specifications

**Application** Outdoor

**Color** Silver

## Dimensions

**Compatible Length, maximum** 1500 mm | 59.055 in

**Compatible Length, minimum** 1200 mm | 47.244 in

**Compatible Diameter, maximum** 115 mm | 4.528 in

**Compatible Diameter, minimum** 60 mm | 2.362 in

**Antenna-to-Pipe Distance** 85 mm | 3.346 in

**Bracket-to-Bracket Distance** 976 mm | 38.425 in

**Weight, net** 5.5 kg | 12.125 lb

## Material Specifications

**Material Type** Galvanized steel

## Mechanical Specifications

**Mechanical Tilt** 0°-12° in steps of 2°

## Packaging and Weights

**Included** Brackets | Hardware

**Packaging quantity** 1

## Regulatory Compliance/Certifications

Agency	Classification
CE	Compliant with the relevant CE product directives

# T-041-GL-E

---

CHINA-ROHS	Below maximum concentration value
ISO 9001:2015	Designed, manufactured and/or distributed under this quality management system
REACH-SVHC	Compliant as per SVHC revision on <a href="http://www.commscope.com/ProductCompliance">www.commscope.com/ProductCompliance</a>
ROHS	Compliant
UK-ROHS	Compliant

