

CGRXD | IP06-12PUTP-1100E-BLUNT

Base Product



InstaPATCH® Cu GigaSPEED XL® U/UTP Plenum Preterminated Copper Cable, 360 1100 Evolve module to unterminated, 12 links

This product will be discontinued on: January 31, 2025

Product Classification

Regional Availability	Asia Australia/New Zealand EMEA Latin America North America
Portfolio	CommScope®
Product Type	Copper trunk cable assembly
Product Brand	GigaSPEED XL® InstaPATCH® Cu

General Specifications

ANSI/TIA Category	6
Cable Type	U/UTP (unshielded)
Conductor Type	Solid
Interface, Connector A	360 1100 Evolve module
Interface Feature, connector A	Standard
Interface, Connector B	Unterminated
Link Count	12
Wiring	T568B

Dimensions

Cable Assembly Length Range (m)	2 – 90
Cable Assembly Length Range (ft)	7 – 295

Electrical Specifications

dc Resistance, maximum	0.3 ohm
Safety Voltage Rating	300 V

Ordering Tree

CGRXD | IPO6-12PUTP-1100E-BLUNT

	1	2	3	4	5	6	7	8	9	10	11	12				
	C	A	A	A	C	-	1	1	H	A	B	B	F	O	S	O

Cable Type	
A	Cat 6A X10D – U/UTP (Plenum)
B	Cat 6A X10D – U/UTP (Riser)
C	Cat 6A X10D – U/UTP (LSZH)
D	Cat 6A X10D – F/UTP (Plenum)
E	Cat 6A X10D – F/UTP (Riser)
F	Cat 6A X10D – F/UTP (LSZH)
G	Cat 6 XL – U/UTP (Plenum)
H	Cat 6 XL – U/UTP (Riser)
J	Cat 6 XL – U/UTP (LSZH)
Q	Cat 6A X10D – S/FTP (LSZH)
R	Cat 6 – U/UTP Class B Rated (LSZH)
S	Cat 6A – U/UTP Class B Rated (LSZH)
Y	Cat 6A X10D SD – U/UTP (Riser)

Connector B	
A	Outlet* – Single Row Standard Density
B	Outlet* – Dual Row Standard Density
C	Outlet* – Dual Row High Density
G	RJ45 Plug* – Single Row Standard Density
H	RJ45 Plug* – Dual Row Standard Density
J	RJ45 Plug* – Dual Row High Density
N	1100 Module
R	360 1100 Evolve Module
S	OneLink 2x6
T	OneLink 2x4

Orientation A	
1	Trident Series Flat
2	Right Paired Flat
3	Right Series Flat
4	Left Paired Flat
5	Left Series Flat
6	Trident Paired Flat
A	Trident Series Angled
B	Right Paired Angled
C	Right Series Angled
D	Left Paired Angled
E	Left Series Angled
F	Trident Paired Angled

Orientation B	
1	Trident Series Flat
2	Right Paired Flat
3	Right Series Flat
4	Left Paired Flat
5	Left Series Flat
6	Trident Paired Flat
A	Trident Series Angled
B	Right Paired Angled
C	Right Series Angled
D	Left Paired Angled
E	Left Series Angled
F	Trident Paired Angled
X	Not Applicable

Connector A	
A	Outlet* – Single Row Standard Density
B	Outlet* – Dual Row Standard Density
C	Outlet* – Dual Row High Density
G	RJ45 Plug* – Single Row Standard Density
H	RJ45 Plug* – Dual Row Standard Density
J	RJ45 Plug* – Dual Row High Density
N	1100 Module
R	360 1100 Evolve Module
S	OneLink 2x6
T	OneLink 2x4
X	Unterminated

Link	
B	6
C	8
D	12
E	16
F	18
G	24

Outlet Color	
0	Not Applicable
1	Black (BK)
2	Blue (BL)
8	White (WH)

UOM	
11	F Foot
	M Meter

Length	
12	XXX

Bundling	
H	Hook-n-loop
S	Sleeving

Jacket Color	
8	White (WH)
C	Slate (SL)
Z	Blue (BL)

Labeling	
8	A Generic Label

- Cords > 1m are authorized for use in channels and are an effective standalone method used to connect active devices
- Cords < 1m are also valid elements for use in a channel or as an equipment interconnect, but due to their limited length are not guaranteed to meet component compliance requirements that were developed to assess the quality of longer cords

Environmental Specifications

Operating Temperature -10 °C to +60 °C (+14 °F to +140 °F)

Environmental Space Plenum

Flammability Rating UL 94 V-0

Regulatory Compliance/Certifications

Agency	Classification
ISO 9001:2015	Designed, manufactured and/or distributed under this quality management system

Included Products

- 2071E-4/23 – GigaSPEED XL® 2071E ETL Verified Category 6 U/UTP Cable, plenum, 4 pair count
- 760151167 – SYSTIMAX 360™ GigaSPEED XL® 1100GS3 Evolve Category 6 U/UTP Distribution Module, 6 port
- 360-IPR-1100-GS3-DM6

2071E-4/23



GigaSPEED XL® 2071E ETL Verified Category 6 U/UTP Cable, plenum, 4 pair count

Product Classification

Regional Availability	Asia Australia/New Zealand EMEA Latin America North America
Portfolio	SYSTIMAX®
Product Type	Twisted pair cable
Product Brand	GigaSPEED XL®

General Specifications

Product Number	2071E
ANSI/TIA Category	6
Cable Component Type	Horizontal
Cable Type	U/UTP (unshielded)
Conductor Type, singles	Solid
Conductors, quantity	8
Pairs, quantity	4
Separator Type	Bisector
Transmission Standards	ANSI/TIA-568.2-D CENELEC EN 50288-6-1 ISO/IEC 11801 Class E

Dimensions

Diameter Over Jacket, nominal	5.74 mm 0.226 in
Jacket Thickness	0.559 mm 0.022 in
Conductor Gauge, singles	23 AWG

Cross Section Drawing



Electrical Specifications

dc Resistance Unbalance, maximum	5 %
dc Resistance, maximum	7.61 ohms/100 m 2.32 ohms/100 ft
Dielectric Strength, minimum	1500 Vac 2500 Vdc
Mutual Capacitance at Frequency	5.6 nF/100 m @ 1 kHz
Nominal Velocity of Propagation (NVP)	71 %
Operating Frequency, maximum	300 MHz
Operating Voltage, maximum	80 V
Remote Powering	Fully complies with the recommendations set forth by IEEE 802.3bt (Type 4) for the safe delivery of power over LAN cable when installed according to ISO/IEC 14763-2, CENELEC EN 50174-1, CENELEC EN 50174-2 or TIA TSB-184-A

Material Specifications

Conductor Material	Bare copper
Insulation Material	FEP Polyolefin
Jacket Material	PVC
Separator Material	Flame retardant polyolefin

Mechanical Specifications

2071E-4/23

Pulling Tension, maximum 11.34 kg | 25 lb

Environmental Specifications

Installation temperature 0 °C to +60 °C (+32 °F to +140 °F)

Operating Temperature -20 °C to +60 °C (-4 °F to +140 °F)

Environmental Space Plenum

Temperature Rating, UL 75 °C | 167 °F

Flame Test Method CMP/FT6

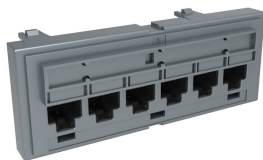
Smoke Test Method CMP/FT6

Packaging and Weights

Cable weight 43.157 kg/km | 29 lb/kft

Regulatory Compliance/Certifications

Agency	Classification
ISO 9001:2015	Designed, manufactured and/or distributed under this quality management system



SYSTIMAX 360™ GigaSPEED XL® 1100GS3 Evolve Category 6 U/UTP Distribution Module, 6 port

Product Classification

Regional Availability

Asia | Australia/New Zealand | EMEA | Latin America | North America

Portfolio

SYSTIMAX®

Product Type

Module

Product Brand

GigaSPEED XL®

General Specifications

ANSI/TIA Category

6

Cable Type

Unshielded

Color

Cool gray

Conductor Type

Solid | Stranded

Intelligence Type

iPatch® ready

Modules, quantity

1

Rack Type

EIA 19 in

Rack Units

1

Termination Type

IDC

Total Ports, quantity

6

Wiring

T568A | T568B

Dimensions

Height

43.688 mm | 1.72 in

Width

106.68 mm | 4.2 in

Depth

27.432 mm | 1.08 in

Compatible Diameter Over Dielectric, maximum

1.168 mm | 0.046 in

Compatible Diameter Over Dielectric, minimum

0.762 mm | 0.03 in

Compatible Conductor Gauge, solid

22 AWG | 24 AWG

760151167 | 360-IPR-1100-GS3-DM6

Compatible Conductor Gauge, stranded

22 AWG | 24 AWG

Electrical Specifications

Current Rating at Temperature

1.5 A @ 20 °C | 1.5 A @ 68 °F

Dielectric Withstand Voltage, RMS, conductive surface

1,500 Vac @ 60 Hz

Dielectric Withstand Voltage, RMS, contact-to-contact

1,000 Vac @ 60 Hz

Insulation Resistance, minimum

500 MOhm

Material Specifications

Contact Plating Material

Precious metals

Material Type

High-impact, flame retardant, thermoplastic | Powder-coated steel

Termination Contact Plating

Nickel

Mechanical Specifications

Plug Insertion Life, minimum

750 times

Plug Insertion Life, test plug

IEC 60603-7 compliant plug

Plug Retention Force, minimum

133.447 N | 30 lbf

Environmental Specifications

Operating Temperature

-10 °C to +60 °C (+14 °F to +140 °F)

Storage Temperature

-40 °C to +70 °C (-40 °F to +158 °F)

Relative Humidity

Up to 95%, non-condensing

Flammability Rating

UL 94 V-0

Safety Standard

UL | cUL

Packaging and Weights

Packaging quantity

1

Weight, net

0.068 kg | 0.15 lb

Regulatory Compliance/Certifications

Agency

Classification

CHINA-ROHS

Below maximum concentration value

ISO 9001:2015

Designed, manufactured and/or distributed under this quality management system

REACH-SVHC

Compliant as per SVHC revision on www.commscope.com/ProductCompliance

ROHS Compliant

UK-ROHS Compliant

