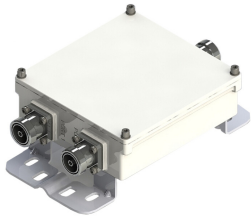


# E11F13P01



Single Diplexer, LTE 700-800/GSM 900, AISG compatible, dc pass on all ports

This product will be discontinued on: December 30, 2024

Replaced By:

E14F06P05

Ultra Compact Single Diplexer 700-800/900, 4.3-10 connectors

## Product Classification

**Product Type** Diplexer

## General Specifications

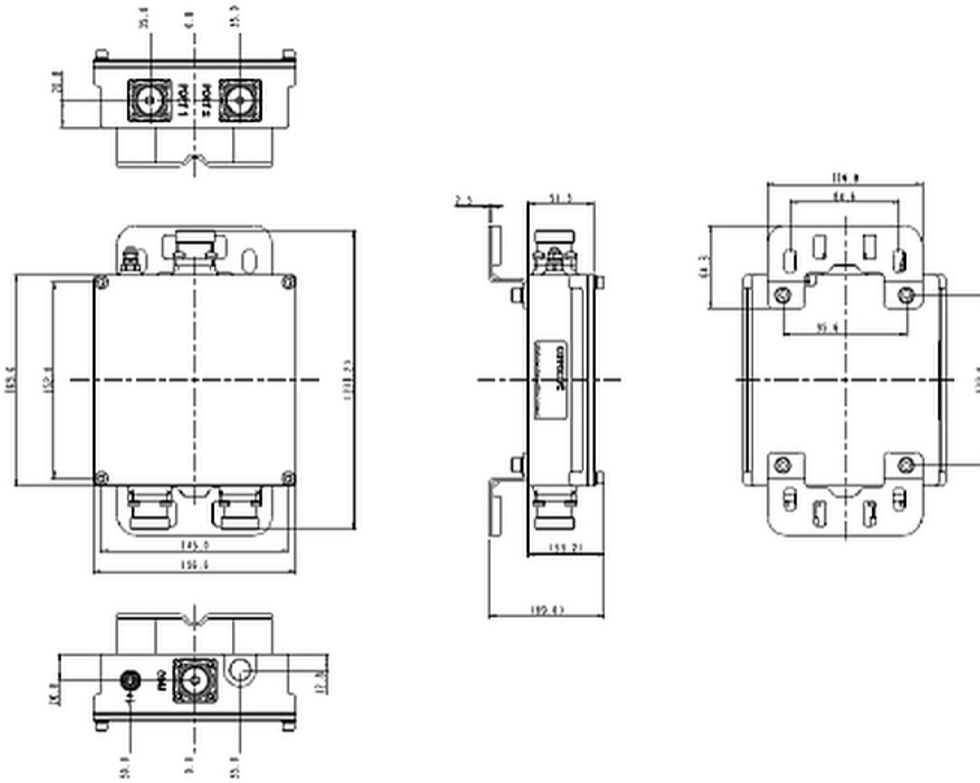
**Product Family** CBC789  
**Color** Gray  
**Common Port Label** PORT 3 COMMON  
**Modularity** 1-Single  
**Mounting** Pole | Wall  
**Mounting Pipe Hardware** Band clamps (2)  
**RF Connector Interface** 7-16 DIN Female  
**RF Connector Interface Body Style** Long neck

## Dimensions

**Height** 60 mm | 2.362 in  
**Width** 157 mm | 6.181 in  
**Depth** 164 mm | 6.457 in  
**Mounting Pipe Diameter Range** 40–160 mm

# E11F13P01

## Outline Drawing



## Electrical Specifications

<b>Impedance</b>	50 ohm
<b>License Band, Band Pass</b>	APT 700   CEL 900   EDD 800   LMR 800

## Electrical Specifications, dc Power/Alarm

<b>dc/AISG Pass-through Method</b>	Factory set
<b>dc/AISG Pass-through Path</b>	Branch 1   Branch 2
<b>dc/AISG Pass-through, combiner</b>	Branch 1   Branch 2
<b>Lightning Surge Current</b>	5 kA
<b>Lightning Surge Current Waveform</b>	8/20 waveform

## Electrical Specifications

<b>Sub-module</b>	<b>1   2</b>	<b>1   2</b>
<b>Branch</b>	1	2
<b>Port Designation</b>	PORT 1 694-803	PORT 2 880-960

# E11F13P01

---

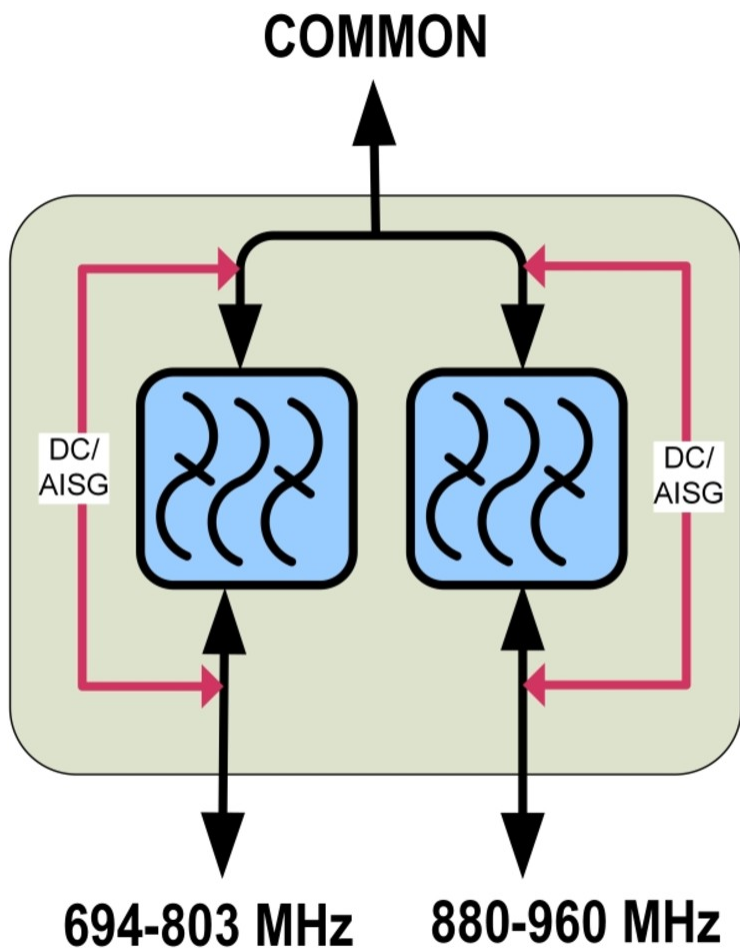
<b>License Band</b>	APT 700, Band Pass EDD 800, Band Pass LMR 800, Band Pass	CEL 900, Band Pass
---------------------	--	--------------------

## Electrical Specifications, Band Pass

<b>Frequency Range, MHz</b>	<b>694–803</b>	<b>880–960</b>
<b>Insertion Loss, maximum, dB</b>	0.3	0.3
<b>Insertion Loss, typical, dB</b>	0.25	0.25
<b>Return Loss, minimum, dB</b>	21	21
<b>Isolation, minimum, dB</b>	50	50
<b>Input Power, RMS, maximum, W</b>	250	250
<b>Input Power, PEP, maximum, W</b>	2500	2500
<b>3rd Order PIM, typical, dBc</b>	-153	-153
<b>3rd Order PIM Test Method</b>	2 x 20 W CW tones	2 x 20 W CW tones

# E11F13P01

## Block Diagram



## Environmental Specifications

<b>Operating Temperature</b>	-40 °C to +65 °C (-40 °F to +149 °F)
<b>Corrosion Test Method</b>	IEC 60068-2-11, 30 days
<b>Ingress Protection Test Method</b>	IEC 60529:2001, IP67

## Packaging and Weights

<b>Included</b>	Mounting hardware
<b>Volume</b>	1.6 L
<b>Weight, net</b>	3 kg   6.614 lb

# E11F13P01

---

## Regulatory Compliance/Certifications

**Agency**

ISO 9001:2015

**Classification**

Designed, manufactured and/or distributed under this quality management system