

# RVVPX306.11R-V2



6-port sector antenna, 2x 698–960 and 4x 1710–2690 MHz, 65° HPBW, 3x RET with manual override.

- Integrated Internal Remote Electrical Tilt (RET), with independent control of electrical tilt with manual override on all arrays
- All Internal RET actuators are connected in “Cascaded SRET” configuration
- Uses the 4.3-10 connector which is 40 percent smaller than the 7-16 DIN connector

This product will be discontinued on: November 30, 2024

Replaced By:

RVV-65A-R3

6-port sector antenna, 2x 694–960 and 4x 1695–2690 MHz, 65° HPBW, 3x RET

## General Specifications

<b>Antenna Type</b>	Sector
<b>Band</b>	Multiband
<b>Grounding Type</b>	RF connector inner conductor and body grounded to reflector and mounting bracket
<b>Performance Note</b>	Outdoor usage
<b>Radome Material</b>	ASA, UV stabilized
<b>Radiator Material</b>	Brass   Low loss circuit board
<b>Reflector Material</b>	Aluminum
<b>RF Connector Interface</b>	4.3-10 Female
<b>RF Connector Location</b>	Bottom
<b>RF Connector Quantity, high band</b>	4
<b>RF Connector Quantity, mid band</b>	0
<b>RF Connector Quantity, low band</b>	2
<b>RF Connector Quantity, total</b>	6

## Remote Electrical Tilt (RET) Information

<b>RET Interface</b>	8-pin DIN Female   8-pin DIN Male
<b>RET Interface, quantity</b>	1 female   1 male
<b>Input Voltage</b>	10–30 Vdc
<b>Internal RET</b>	High band (2)   Low band (1)

# RVVPX306.11R-V2

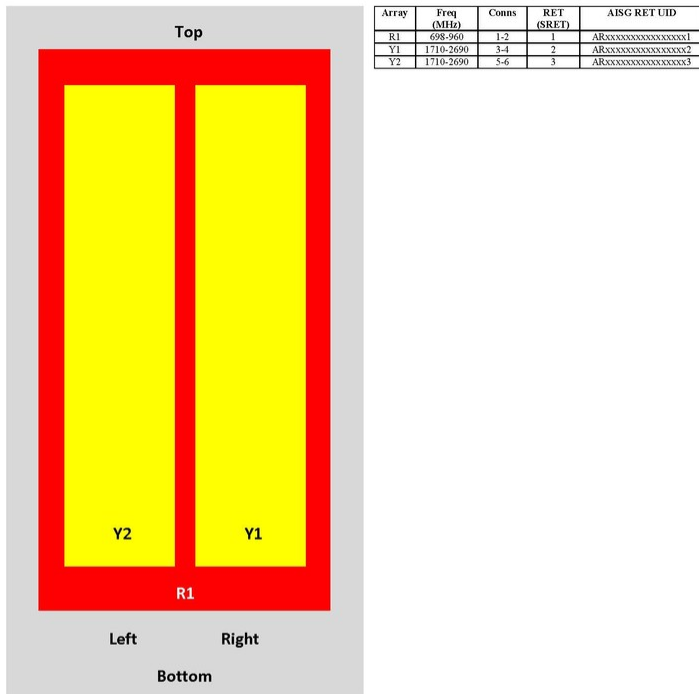
<b>Power Consumption, idle state, maximum</b>	2 W
<b>Power Consumption, normal conditions, maximum</b>	13 W
<b>Protocol</b>	3GPP/AISG 2.0 (Single RET)

## Dimensions

<b>Width</b>	353 mm   13.898 in
<b>Depth</b>	209 mm   8.228 in
<b>Length</b>	1600 mm   62.992 in
<b>Net Weight, without mounting kit</b>	23 kg   50.706 lb

## Array Layout

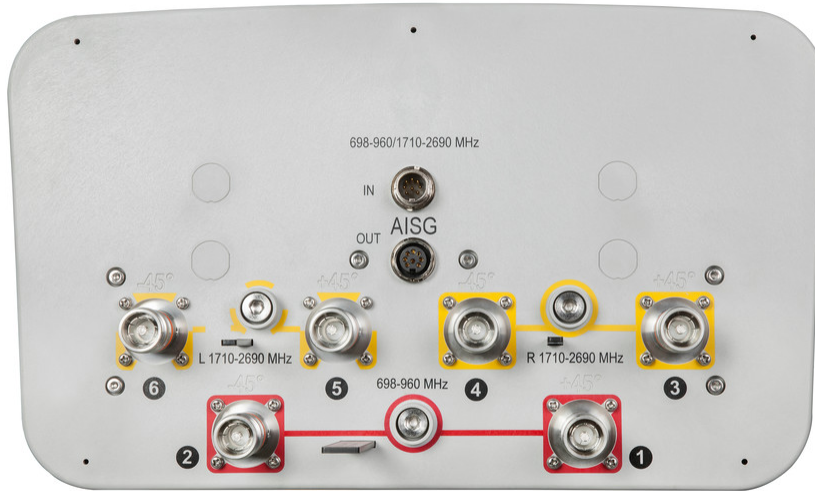
RVVPX



View from the front of the antenna  
(Sizes of colored boxes are not true depictions of array sizes)

## Port Configuration

# RVVPX306.11R-V2



## Electrical Specifications

<b>Impedance</b>	50 ohm
<b>Operating Frequency Band</b>	1710 – 2690 MHz   698 – 960 MHz
<b>Polarization</b>	±45°

## Electrical Specifications

Frequency Band, MHz	698–790	790–890	890–960	1710–1920	1920–2170	2300–2690
<b>Gain, dBi</b>	14.1	14.8	14.9	17.2	17.6	18.2
<b>Beamwidth, Horizontal, degrees</b>	68.2	68.7	63	62	63.1	61.4
<b>Beamwidth, Vertical, degrees</b>	16.4	14.7	13.4	7.5	6.7	5.4
<b>Beam Tilt, degrees</b>	0–10	0–10	0–10	0–10	0–10	0–10
<b>USLS (First Lobe), dB</b>	18	18	18	18	18	18
<b>Null Fill, dB</b>				-22	-22	-22
<b>Front-to-Back Ratio at 180°, dB</b>	25	24	25	29	32	30
<b>CPR at Boresight, dB</b>	15.9	12	13.4	20	17	15
<b>CPR at Sector, dB</b>	10	10	7	7	5.4	3
<b>Isolation, Cross Polarization, dB</b>	25	25	25	25	25	25

# RVVPX306.11R-V2

<b>Isolation, Inter-band, dB</b>	30	30	30	30	30	30
<b>VSWR   Return loss, dB</b>	1.43   15.0	1.43   15.0	1.43   15.0	1.5   14.0	1.5   14.0	1.5   14.0
<b>PIM, 3rd Order, 2 x 20 W, dBc</b>	-150	-150	-150	-150	-150	-150
<b>Input Power per Port, maximum, watts</b>	300	300	300	250	250	250

## Mechanical Specifications

<b>Wind Loading @ Velocity, frontal</b>	748.0 N @ 150 km/h (168.2 lbf @ 150 km/h)
<b>Wind Loading @ Velocity, rear</b>	634.0 N @ 150 km/h (142.5 lbf @ 150 km/h)
<b>Wind Speed, maximum</b>	250 km/h (155 mph)

## Packaging and Weights

<b>Width, packed</b>	427 mm   16.811 in
<b>Depth, packed</b>	325 mm   12.795 in
<b>Length, packed</b>	1787 mm   70.354 in
<b>Weight, gross</b>	40 kg   88.185 lb

## Regulatory Compliance/Certifications

<b>Agency</b>	<b>Classification</b>
CE	Compliant with the relevant CE product directives
ISO 9001:2015	Designed, manufactured and/or distributed under this quality management system



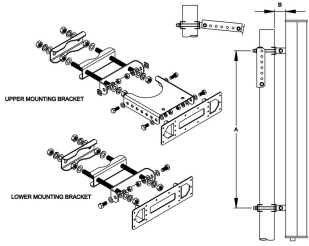
## Included Products

T-041-GL-E	-	Adjustable Tilt Pipe Mounting Kit for 2.0"-4.5" (60-115mm) OD round members for panel antennas. Includes 2 clamp sets.
------------	---	--

## \* Footnotes

<b>Performance Note</b>	Severe environmental conditions may degrade optimum performance
-------------------------	---

# T-041-GL-E



Adjustable Tilt Pipe Mounting Kit for 2.0"-4.5" (60-115mm) OD round members for panel antennas. Includes 2 clamp sets.

## Product Classification

**Product Type** Adjustable tilt mounting kit

## General Specifications

**Application** Outdoor

**Color** Silver

## Dimensions

**Compatible Length, maximum** 1500 mm | 59.055 in

**Compatible Length, minimum** 1200 mm | 47.244 in

**Compatible Diameter, maximum** 115 mm | 4.528 in

**Compatible Diameter, minimum** 60 mm | 2.362 in

**Antenna-to-Pipe Distance** 85 mm | 3.346 in

**Bracket-to-Bracket Distance** 976 mm | 38.425 in

**Weight, net** 5.5 kg | 12.125 lb

## Material Specifications

**Material Type** Galvanized steel

## Mechanical Specifications

**Mechanical Tilt** 0°-12° in steps of 2°

## Packaging and Weights

**Included** Brackets | Hardware

**Packaging quantity** 1

## Regulatory Compliance/Certifications

Agency	Classification
CE	Compliant with the relevant CE product directives

# T-041-GL-E

---

CHINA-ROHS	Below maximum concentration value
ISO 9001:2015	Designed, manufactured and/or distributed under this quality management system
REACH-SVHC	Compliant as per SVHC revision on <a href="http://www.commscope.com/ProductCompliance">www.commscope.com/ProductCompliance</a>
ROHS	Compliant
UK-ROHS	Compliant

