

# 4P-4L-A2



4-port sector antenna, 4x 694–960 MHz, 65° HPBW, 2x RET

- All Internal RET actuators are connected in “Cascaded SRET” configuration
- Uses the 4.3-10 connector which is 40 percent smaller than the 7-16 DIN connector

## General Specifications

<b>Antenna Type</b>	Sector
<b>Band</b>	Single band
<b>Color</b>	Light Gray (RAL 7035)
<b>Grounding Type</b>	RF connector inner conductor and body grounded to reflector and mounting bracket
<b>Performance Note</b>	Outdoor usage
<b>Radome Material</b>	Fiberglass, UV resistant
<b>Radiator Material</b>	Aluminum
<b>Reflector Material</b>	Aluminum
<b>RF Connector Interface</b>	4.3-10 Female
<b>RF Connector Location</b>	Bottom
<b>RF Connector Quantity, high band</b>	0
<b>RF Connector Quantity, mid band</b>	0
<b>RF Connector Quantity, low band</b>	4
<b>RF Connector Quantity, total</b>	4

## Remote Electrical Tilt (RET) Information

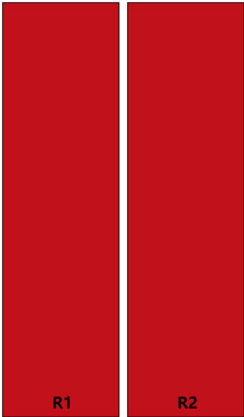
<b>RET Hardware</b>	CommRET v2
<b>RET Interface</b>	8-pin DIN Female   8-pin DIN Male
<b>RET Interface, quantity</b>	1 female   1 male
<b>Input Voltage</b>	10–30 Vdc
<b>Internal RET</b>	Low band (2)
<b>Power Consumption, active state, maximum</b>	10 W
<b>Power Consumption, idle state, maximum</b>	2 W
<b>Protocol</b>	3GPP/AISG 2.0 (Single RET)

# 4P-4L-A2

## Dimensions

<b>Width</b>	467 mm   18.386 in
<b>Depth</b>	167 mm   6.575 in
<b>Length</b>	1497 mm   58.937 in
<b>Net Weight, antenna only</b>	15.6 kg   34.392 lb

## Array Layout

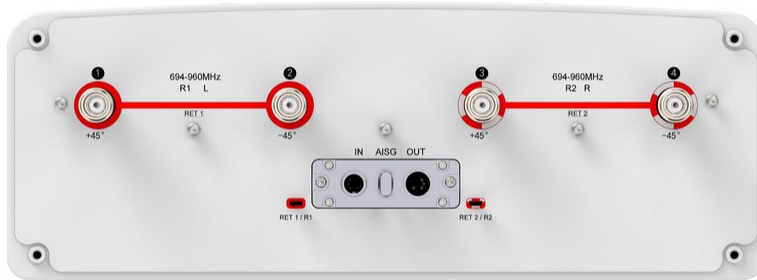


Array ID	Frequency (MHz)	RF Connector	HPBW	RET (SRET)	AISG No.	RET UID
R1	694-960	1 - 2	65°	1	AISG1	CPxxxxxxxxxxxxR1
R2	694-960	3 - 4	65°	2	AISG1	CPxxxxxxxxxxxxR2

(Sizes of colored boxes are not true depictions of array sizes)

## Port Configuration

# 4P-4L-A2



## Electrical Specifications

<b>Impedance</b>	50 ohm
<b>Operating Frequency Band</b>	694 – 960 MHz
<b>Polarization</b>	±45°
<b>Total Input Power, maximum</b>	800 W
<b>BASTA Version, electrical</b>	BASTA v12

## Electrical Specifications

	<b>R1,R2</b>	<b>R1,R2</b>	<b>R1,R2</b>
<b>Frequency Band, MHz</b>	<b>694–790</b>	<b>790–890</b>	<b>890–960</b>
<b>RF Port</b>	1-4	1-4	1-4
<b>Gain, dBi</b>	14.5	14.8	15.2
<b>Beamwidth, Horizontal, degrees</b>	62	60	60
<b>Beamwidth, Vertical, degrees</b>	15.1	13.6	12.6
<b>Beam Tilt, degrees</b>	2–16	2–16	2–16
<b>USLS (First Lobe), dB</b>	15	18	18
<b>Front-to-Back Ratio, Copolarization 180° ± 30°, dB</b>	27	28	28

# 4P-4L-A2

<b>Isolation, Cross Polarization, dB</b>	25	25	25
<b>Isolation, Inter-band, dB</b>	28	28	28
<b>VSWR   Return loss, dB</b>	1.5   14.0	1.5   14.0	1.5   14.0
<b>PIM, 3rd Order, 2 x 20 W, dBc</b>	-150	-150	-150
<b>Input Power per Port, maximum, watts</b>	300	300	300

## Mechanical Specifications

<b>Wind Loading @ Velocity, frontal</b>	595.0 N @ 150 km/h (133.8 lbf @ 150 km/h)
<b>Wind Loading @ Velocity, lateral</b>	222.0 N @ 150 km/h (49.9 lbf @ 150 km/h)
<b>Wind Loading @ Velocity, rear</b>	735.0 N @ 150 km/h (165.2 lbf @ 150 km/h)
<b>Wind Speed, maximum</b>	241 km/h (150 mph)

## Packaging and Weights

<b>Width, packed</b>	542 mm   21.339 in
<b>Depth, packed</b>	277 mm   10.906 in
<b>Length, packed</b>	1697 mm   66.811 in
<b>Weight, gross</b>	25 kg   55.116 lb

## Regulatory Compliance/Certifications

<b>Agency</b>	<b>Classification</b>
CHINA-ROHS	Below maximum concentration value
ISO 9001:2015	Designed, manufactured and/or distributed under this quality management system
REACH-SVHC	Compliant as per SVHC revision on <a href="http://www.commscope.com/ProductCompliance">www.commscope.com/ProductCompliance</a>
ROHS	Compliant
UK-ROHS	Compliant



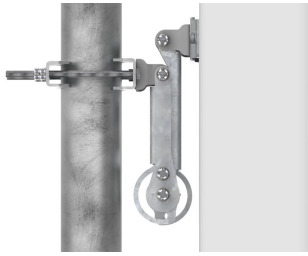
## Included Products

BSAMNT-B95-04	–	Wide Profile Antenna Downtilt Mounting Kit for 2.4 - 4.5 in (60 - 115 mm) OD round members. Kit contains one scissor top bracket set and one bottom bracket set.
---------------	---	--

## \* Footnotes

<b>Performance Note</b>	Severe environmental conditions may degrade optimum performance
-------------------------	---

# BSAMNT-B95-04



Wide Profile Antenna Downtilt Mounting Kit for 2.4 - 4.5 in (60 - 115 mm) OD round members. Kit contains one scissor top bracket set and one bottom bracket set.

## Product Classification

**Product Type** Downtilt mounting kit

## General Specifications

**Application** Outdoor

**Color** Silver

## Dimensions

**Compatible Diameter, maximum** 115 mm | 4.528 in

**Compatible Diameter, minimum** 60 mm | 2.362 in

**Weight, net** 4.5 kg | 9.921 lb

## Material Specifications

**Material Type** Galvanized steel

## Packaging and Weights

**Included** Brackets | Hardware

**Packaging quantity** 2

## Regulatory Compliance/Certifications

### Agency

CE  
ISO 9001:2015

### Classification

Compliant with the relevant CE product directives  
Designed, manufactured and/or distributed under this quality management system

