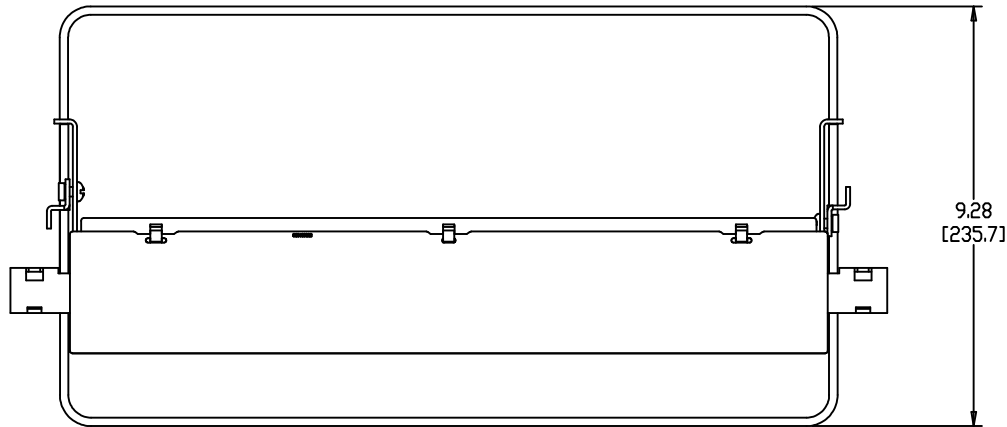
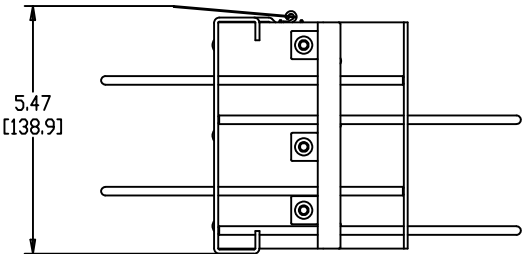
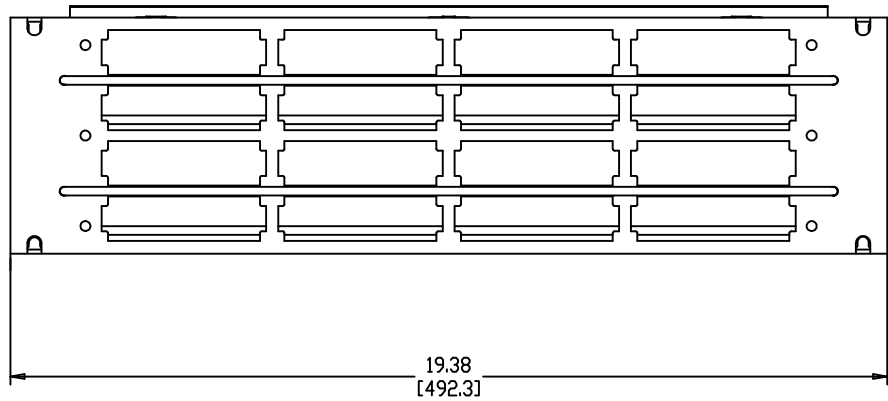


MATERIAL ID	DESCRIPTION
760136895	BRACKET FOR 16 360DM MODULES OR 16 360G2 CARTRIDGES WITH FRONT AND REAR CABLE MANAGEMENT BARS



NOTES:

1. SEE SYSTIMAX CATALOG FOR PART NUMBER SUFFIXES TO INDICATE COLOR/PKG.
2. SEE SYSTIMAX CATALOG FOR COMPLETE LIST OF PARTS RELATED TO THE USE OF THIS PRODUCT.
3. DIMENSIONS IN PARENTHESES ARE IN METRIC.
4. PART INCLUDES:
  - (1) 3U PANEL-RFE MOUNTED ASSEMBLY
  - (2) CLAMP-FIBER MANAGEMENT BAR ASSEMBLY
  - (4) BAR, MOUNTING-RFE FIBER MGMT
  - (1) KIT, R2300 RETAINER
  - (1) KIT, SAE FASTENER
  - (3) HANGER
  - (6) SCREW, PAN COMBO HD, 12-24X3/8", CLEAR ZINC



FLRBX-BLKHD-MOD-W/CBL-MGMT	
COMMScope, INC OF NORTH CAROLINA	
SYSTIMAX® SOLUTIONS	
DRAWN BY DJ	DWG NO 760136895
APPROVED BY	DATE 06/28/2010

REV	DATE	ECR	DESCRIPTION	APPROVED BY
1	06/28/10		INITIAL ISSUE	