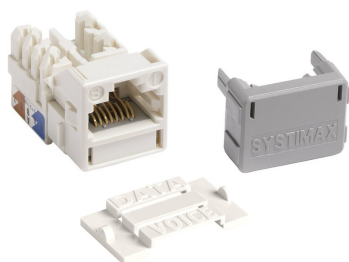


760250041 | ECO MGS400-WH-24



GigaSPEED XL® M-Series Modular Jack, RJ45, Cat6 Unshielded, White (24 ea/pkg)

- Electrical performance guaranteed to meet or exceed the channel specifications to ISO/IEC 11801 Class E and ANSI/TIA-568.2-D Category 6
- Patented crossing of straddling pair contacts enables efficient alien crosstalk reduction in the channel
- Snaps into standard M-series faceplates, surface-mount boxes, consolidation point boxes and modular panels
- Mountable either at 90 degrees (straight) or 45 degrees (angled) in M-series faceplate
- Universal design and label supports both T568 A & B wiring
- IDC connector terminations on rear of base allow quick and easy installation of 22 to 24 AWG cable
- Can support network line speeds in excess of 1 Gb/s
- Low-profile rear protective strain relief cap, protects against contamination and secures the connection
- Part of CommScope's initiative of removing single-use plastics which also includes copper panels, jacks, cords and faceplates

Product Classification

Regional Availability

Asia | Australia/New Zealand | EMEA | Latin America | North America

Portfolio

SYSTIMAX®

Product Type

Modular jack

Product Brand

GigaSPEED XL®

Product Series

MGS400

General Specifications

ANSI/TIA Category

6

Cable Type

Unshielded

Color

White

Conductor Type

Solid | Stranded

Integrated Dust Cover Type

None

Mounting Note

Color matches with M-series White Faceplates and Surface Mount Boxes

Termination Type

IDC

Wiring

T568A | T568B

760250041 | ECO MGS400-WH-24

Dimensions

Height	19.4 mm 0.764 in
Width	21.08 mm 0.83 in
Depth	30.2 mm 1.189 in
Compatible Conductor Gauge, solid	22-24 AWG 21 AWG (for CommScope GigaREACH cable only)
Compatible Conductor Gauge, stranded	22-24 AWG

Electrical Specifications

Contact Resistance Variation, maximum	20 mOhm
Contact Resistance, maximum	100 mOhm
Current Rating at Temperature	1.5 A @ 20 °C 1.5 A @ 68 °F
Dielectric Withstand Voltage, RMS, conductive surface	1,500 Vac @ 60 Hz
Dielectric Withstand Voltage, RMS, contact-to-contact	1,000 Vac @ 60 Hz
Insulation Resistance, minimum	500 MOhm
Remote Powering	Fully supports the safe delivery of power over LAN cabling described by IEEE 802.3bt (Type 4) and complies with the unmating under electrical load requirements prescribed by IEC 60512-99-002
PoE Durability	Supports IEEE 802.3bt Type 4 (90 W) applications after 3000 plug to jack mating cycles

Material Specifications

Contact Plating Material	Precious metals
Material Type	Copper alloy High-impact, flame retardant, thermoplastic
Termination Contact Plating	Nickel

Mechanical Specifications

Plug Retention Force, minimum	133 N 29.9 lbf
Plug to Jack Mating Cycles	Complies to IEC 60603-7 series

Environmental Specifications

Operating Temperature	-10 °C to +60 °C (+14 °F to +140 °F)
Storage Temperature	-40 °C to +70 °C (-40 °F to +158 °F)
Relative Humidity	Up to 95%, non-condensing

760250041 | ECO MGS400-WH-24

Flammability Rating

UL 94 V-0

Safety Standard

UL | cUL

Packaging and Weights

Packaging Material

Eco-friendly, single-use plastics-free

Packaging quantity

24

Packaging Type

Box | Carton