

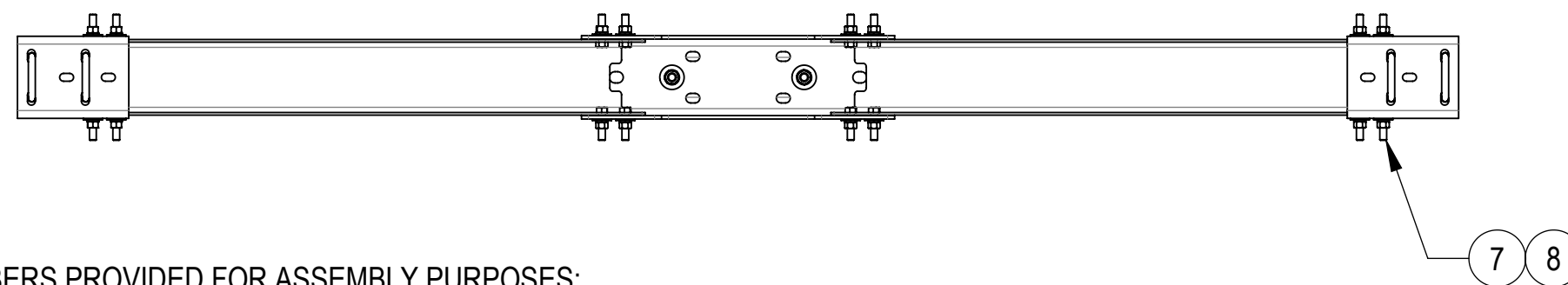
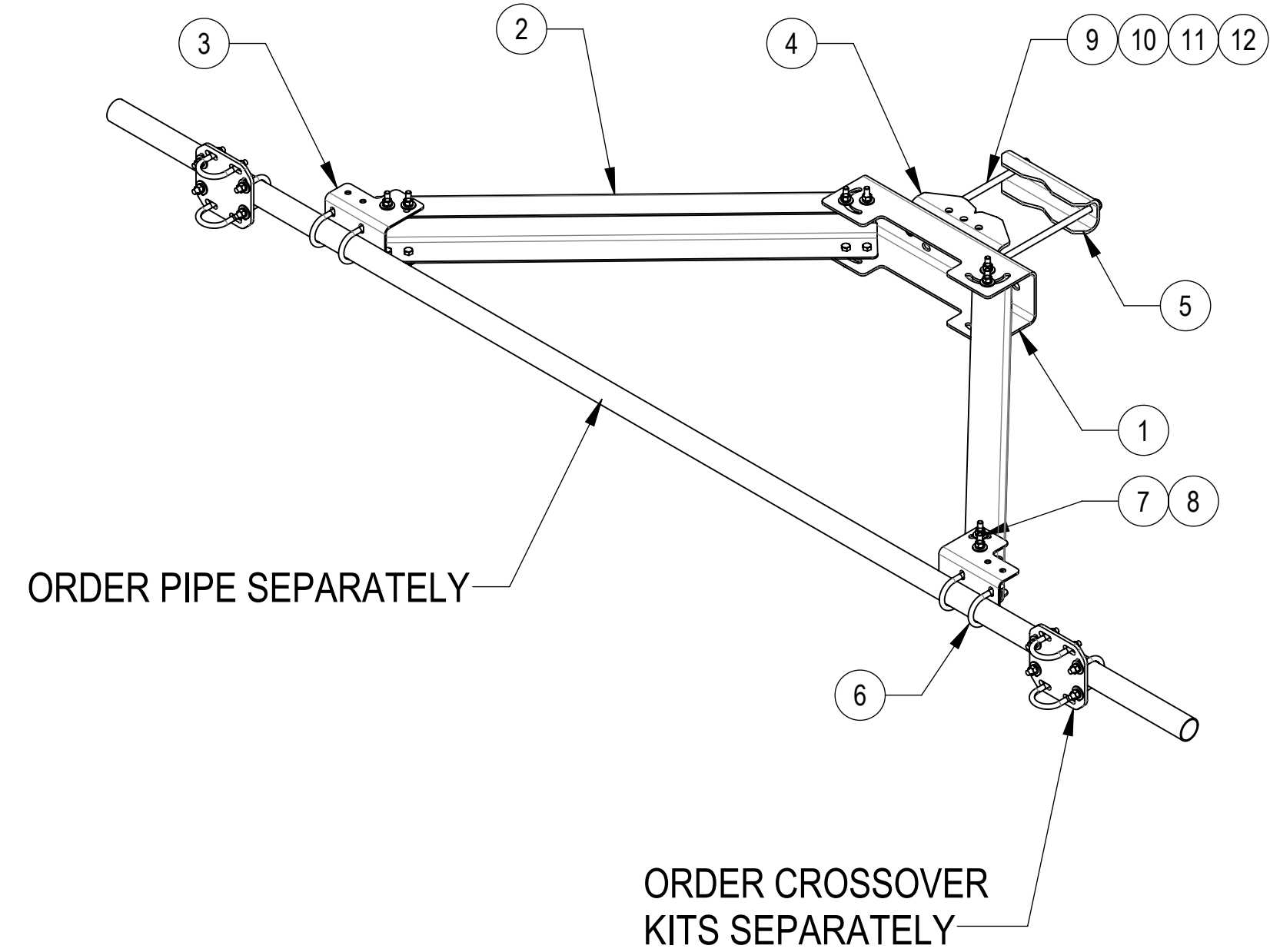
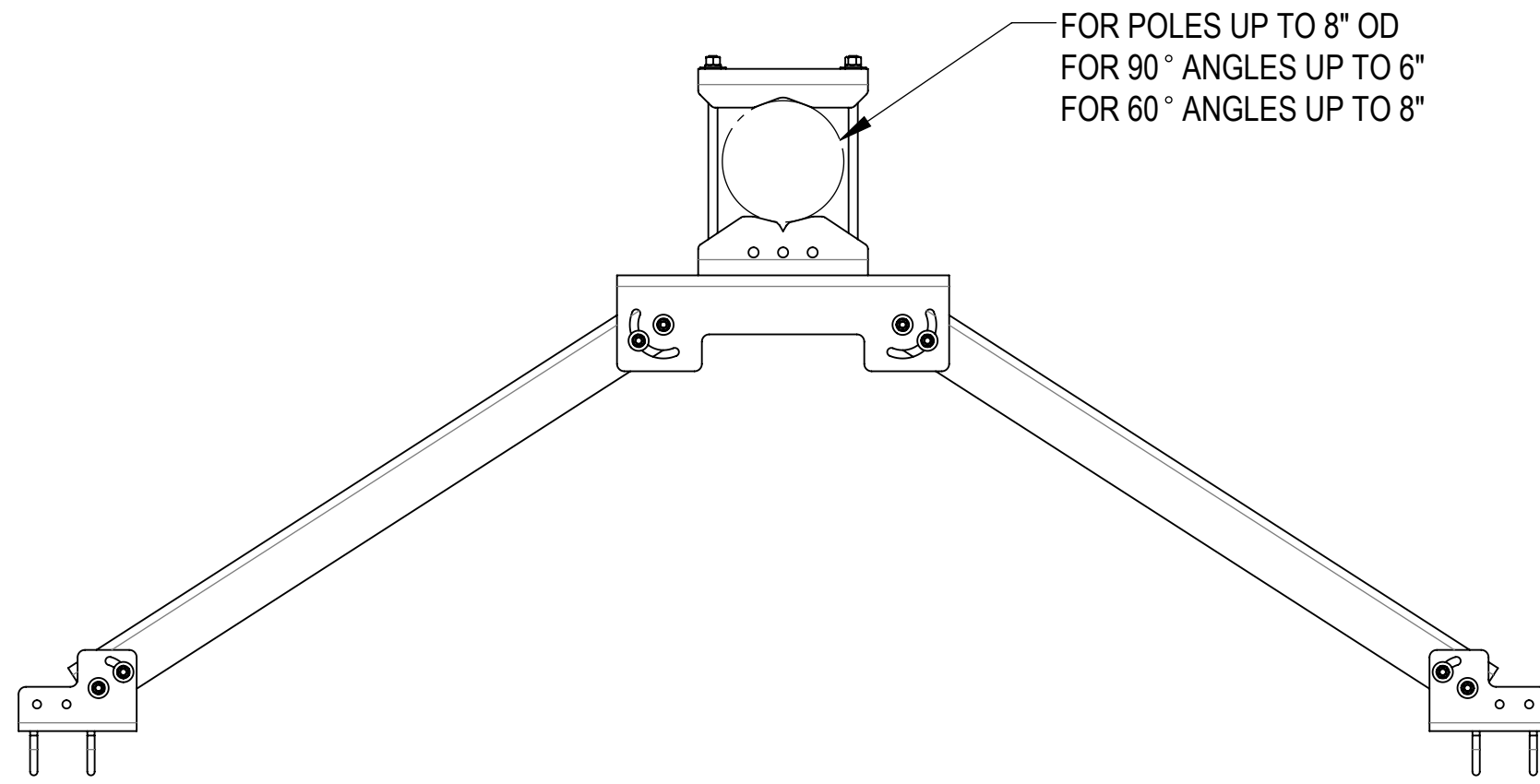
- 1.0 GENERAL NOTES
 - 1.1 ALL METRIC DIMENSIONS ARE IN BRACKETS [X.X]
 - 1.2 FOR PATENT INFO: <https://www.cs-pat.com>

- 2.0 DESIGN NOTES
 - 2.1 ANY HAZARDS OR OBSTRUCTIONS TO THE CLIMBING FACILITY AND SAFETY CLIMB MUST BE IDENTIFIED PRIOR TO INSTALLING THE APPURTENANCE. ADDITIONAL PRODUCTS MAY BE REQUIRED TO MAINTAIN THE INTEGRITY OF THE SAFETY CLIMB. DURING INSTALLATION, TEMPORARY AND/OR PERMANENT PRECAUTIONARY MEASURES SHOULD BE TAKEN TO PRESERVE THE CLIMBING FACILITY AND/OR SAFETY CLIMB.

- 3.0 MANUFACTURING/SPECIAL REQUIREMENTS
 - 3.1 TIGHTEN ALL BOLTS SECURING FLAT PLATES BY THE TURN-OF-NUT METHOD. TIGHTEN ALL U-BOLTS USING TURN-OF-NUT METHOD WITH ATTENTION TO LEAVE EQUAL DISTANCE AND EQUAL FORCE ON EACH LEG OF THE U-BOLT.

- 4.0 TEST
- 5.0 PACKAGING
 - 5.1 PACKAGING SHALL MEET COMMSCOPE REQUIREMENTS PER DOCUMENT IS-PL-3005
 - 5.2 PRINTED DOCUMENT TO BE PLACED INSIDE POLYBAG AND THEN IN SHIPPING CONTAINER
 - 5.3 EXTRA HARDWARE MAY BE SUPPLIED, BAGGED AND SHIPPED

REVISIONS			
REV.	DESCRIPTION	DATE	APPROVED
A	INITIAL RELEASE	MSM 06NOV13	TP
B	MTC397522 WAS SMU208004; MTC397521 WAS SMU208006; HARDWARE UPDATED	YX1027 07MAY24	BCROSS 40194456CMO



COMPONENT PART NUMBERS PROVIDED FOR ASSEMBLY PURPOSES;
INDIVIDUAL COMPONENTS MAY BE SHIPPED AS PARTS WITHIN AN INCLUDED KIT.

ITEM NO.	PART NUMBER	DESCRIPTION	QTY.	WEIGHT	NOTE NO.
1	MTC340501	MOUNT CHANNEL FOR MTC3405	1	23.3427 LBS	
2	MTC340502	SUPPORT ARM	2	29.8770 LBS	
3	MTC340503	MOUNT CHANNEL	2	5.3924 LBS	
4	MTC397522	CLAMP, FRONT MOUNTING	1	10.0244 LBS	
5	MTC397521	CLAMP, BACK	1	6.9353 LBS	
6	GUB-4240	1/2" X 2-1/2" X 4" GALV U-BOLT	4	0.5611 LBS	
7	GB-04205	1/2" X 2" GALV BOLT KIT	16	0.16 LBS	
8	GWF-04	1/2" GALV FLAT WASHER	16	0.04 LBS	
9	MT-382-16	5/8" X 16" GALV THREADED ROD	2	1.38 LBS	
10	GWF-05	5/8" GALV FLAT WASHER, 1.7OD	4	0.06 LBS	
11	GWL-05	5/8" GALV LOCK WASHER	4	0.03 LBS	
12	GN-05	5/8" GALV HEX NUT	6	0.08 LBS	

DENSITY		lbs/in ³
MASS	121.48	lbs
VOLUME	430.70	in ³
SURFACE AREA	4294.83	in ²
HEIGHT	9.06"	
LENGTH	90.32"	
WIDTH	56.83"	

COMMSCOPE, INC. OF NORTH CAROLINA

TOLERANCES		SAP MATERIAL MASTER	
1 PLACE .X[X] ± 0.12[3.0]	3 PLACE .XXX[X] ± 0.03[0.8]	VSR-TS-B	
2 PLACE .XX[X] ± 0.06[1.5]	ANGLES ± 2°		
FINISH		MATERIAL	
<small>UNLESS OTHERWISE SPECIFIED DIMENSIONS ARE IN INCHES INTERPRET PER ANSI Y 14.5M-1994</small>		NAME	TITLE
		CE MSM 06NOV13	V-STABILIZER TOWER KIT
		RW YMENG 05/31/2024	
		AD YX1027 05/31/2024	
RE YMENG 08/20/2024			
ECN 40194456CMO	SCALE	DOCUMENT NO.	
	1:24	VSR-TS-B	
SIZE	Auth Group	INSL	MODEL
C			
VERSION	STATUS	REVISION	DRAWING
01	RE	B	VERSION STATUS REVISION
			00 RE B
			SHEET
			1 OF 2

4

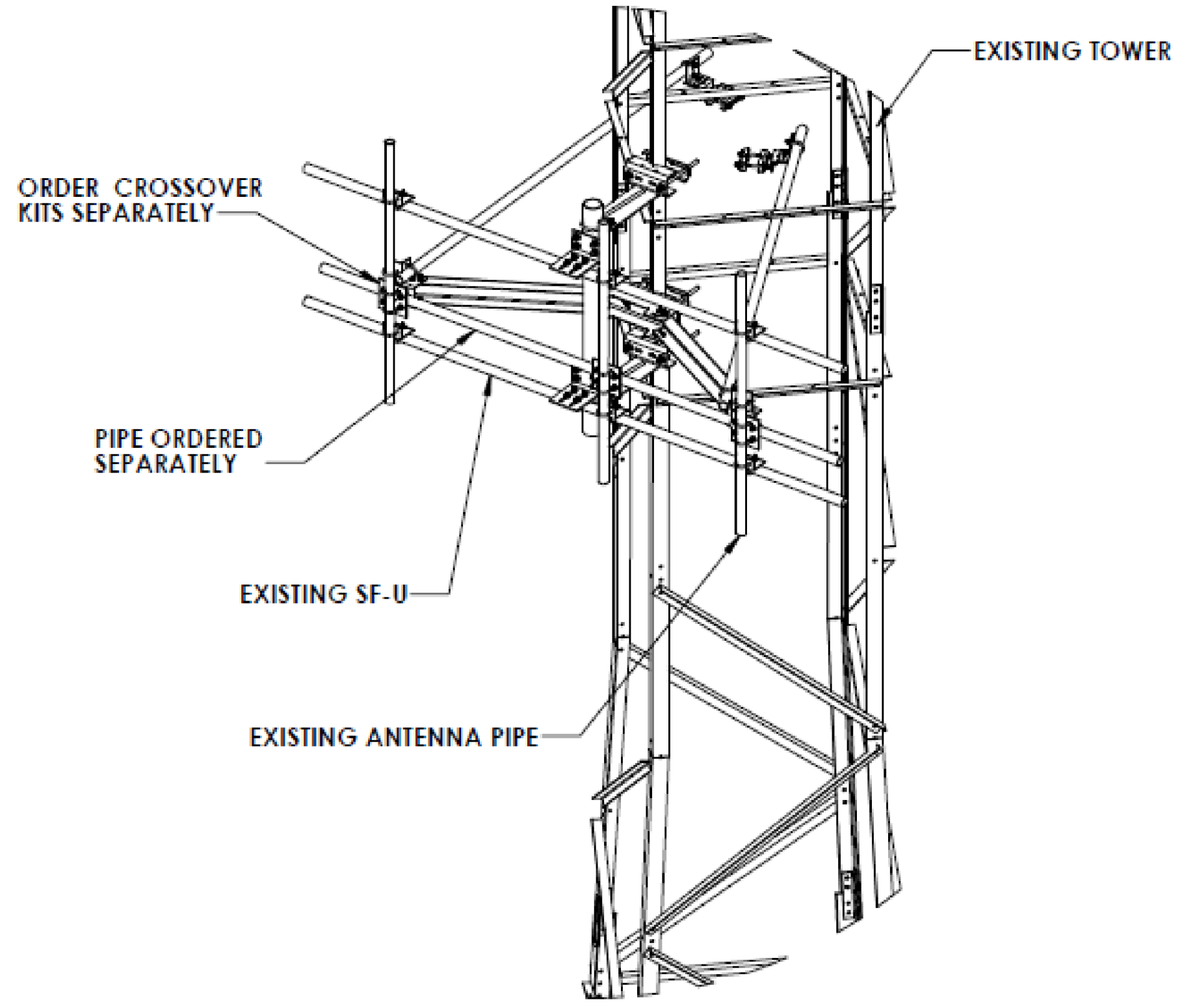
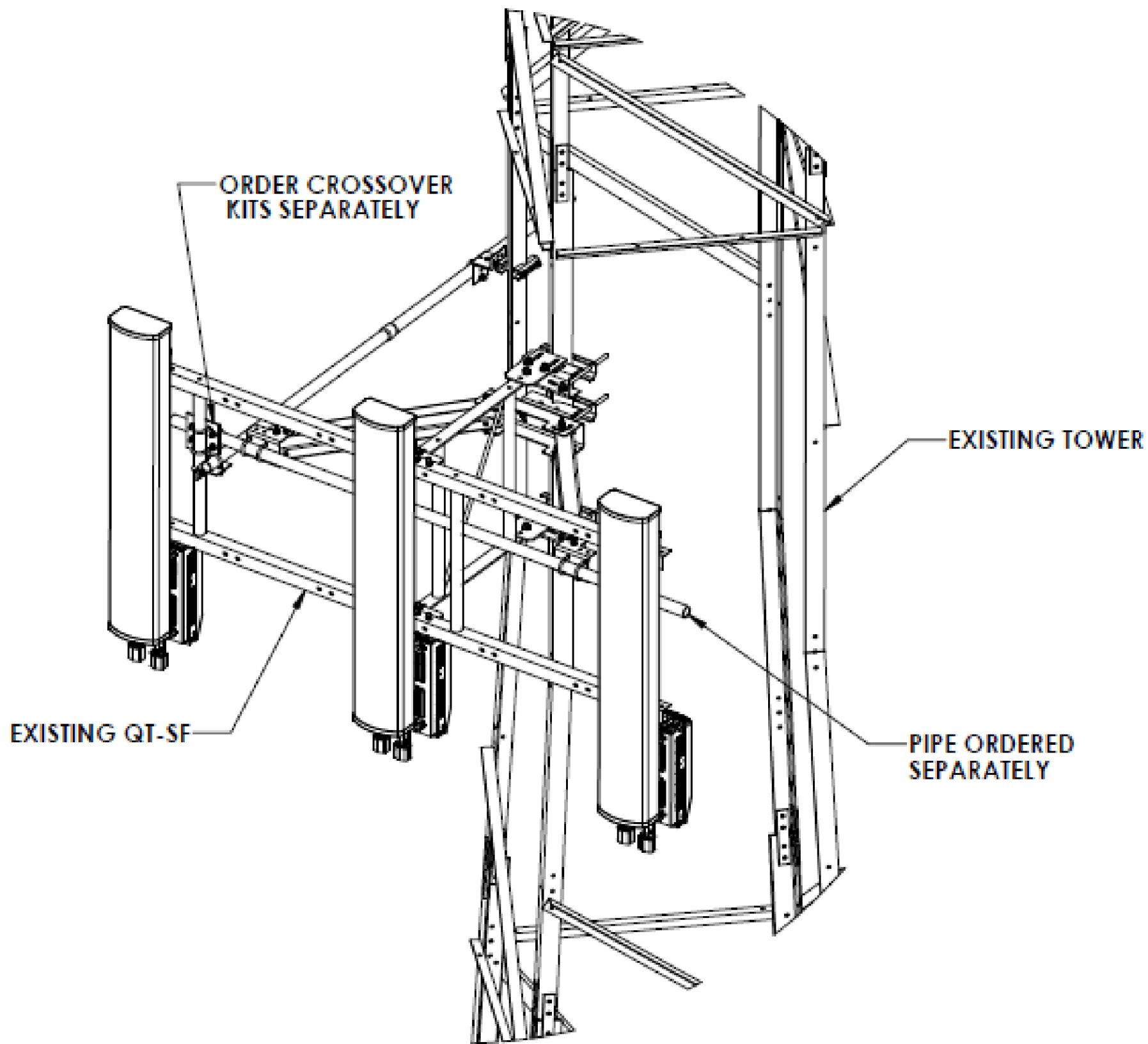
3

2

1

D

D



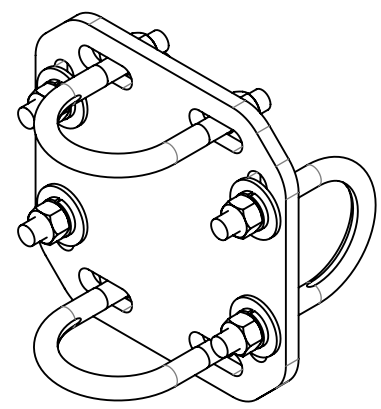
C

C

B

B

AVAILABLE CROSSOVER KITS



PART NUMBER	DESCRIPTION
XP-2020	CROSSOVER PLATE KIT, 2-3/8 OD X 2-3/8 OD
XP-2025	CROSSOVER PLATE KIT, 2-3/8 OD X 2-7/8 OD
XP-2030	CROSSOVER PLATE KIT, 2-3/8 OD X 3-1/2 OD
XP-2040	CROSSOVER PLATE KIT 2-3/8 OD X 4-1/2 OD

COMMSCOPE, INC. OF NORTH CAROLINA				
TITLE				
V-STABILIZER TOWER KIT				
SIZE	SCALE	DOCUMENT NO.		
C	1:16	VSR-TS-B		
		DRAWING		SHEET
		VERSION	STATUS	REVISION
		00	RE	B
				2 OF 2

4

3

2

1

A

A