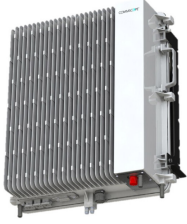


7830127-0002 | CAP MX F-DC



Carrier Access Point with 11-Band Support from 600 MHz to 2700 MHz for Medium Power Applications, Fiber Fed, DC Powered

Product Classification

Product Type	Access point
Product Brand	ERA®
Product Series	CAP MX

General Specifications

Fan Kit	Not included
Fed Type	Fiber fed
Note	Detailed Product Specifications are available. Please contact your local CommScope representative.
Powering Type	Internal DC powered

Electrical Specifications

License Band	AWS 1700 B 70 BRS 2500 CEL 850 LMR 750 PCS 1900 SMR 800 USA 600 USA 700 USA 700E USA 750 WCS 2300
Voltage Range	-60 to -36 Vdc

Regulatory Compliance/Certifications

Agency	Classification
CHINA-ROHS	Above maximum concentration value
ROHS	Compliant/Exempted
UK-ROHS	Compliant/Exempted

