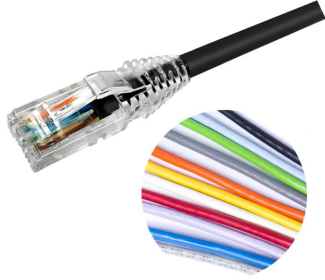


NPP06UZDB



NPP RJ45 Patch Cord, category 6, U/UTP, LSZH, Eco-packaging

- High-performance patch cords exceeding industry standards supporting NETCONNECT channel specifications
- Standardized transparent, slim-line boots provides consistent patch cord appearance and supports highest density applications
- Colored clips are available to fit the transparent boot, eliminating the need of multiple colors for matching every jacket color
- Colored pull latch tabs are available for easier plug release handling from the modular jack

Product Classification

Regional Availability	Asia EMEA Latin America
Portfolio	NETCONNECT®
Product Type	Twisted pair patch cord
Product Series	NPP
Ordering Note	Cords > 1 m are authorized for use in channels and are an effective standalone method used to connect active devices

General Specifications

ANSI/TIA Category	6
Cable Type	U/UTP (unshielded)
Conductor Type	Stranded
Interface, Connector A	RJ45 plug
Interface Feature, connector A	Standard
Interface, Connector B	RJ45 plug
Interface Feature, connector B	Standard
Jacket Color	Black Blue Green Orange Red Slate White Yellow
Pairs, quantity	4
Transmission Standards	IEEE 802.3bt Type 4
Wiring	T568B

Dimensions

Cable Assembly Length Range (m)	1 – 30
Cable Assembly Length Range (ft)	4 – 100
Cable Assembly Length Range (cm)	100 – 999

NPP06UZDB

Cable Assembly Length Range (in)	48 – 999
Diameter Over Jacket	7.01 mm 0.276 in
Compatible Conductor Gauge, stranded	24 AWG 26 AWG

Ordering Tree

NPP - ¹⁰ ¹² ¹¹

Jacket Color

10	BK	Black
	BL	Blue
	GN	Green
	GY	Gray
	OR	Orange
	PK	Pink
	RD	Red
	WT	White
	YL	Yellow

UOM

11	F	Foot
	M	Meter
	N	Inch
	C	Centimeter

Length

12	XXX
----	-----

Notes

- Cords > 1m are authorized for use in channels and are an effective standalone method used to connect active devices
- Cords < 1m are also valid elements for use in a channel or as an equipment interconnect but due to their limited length are not guaranteed to meet component compliance requirements that were developed to assess the quality of longer cords

Mechanical Specifications

Plug Insertion Life, minimum	750 times
-------------------------------------	-----------

Environmental Specifications

Operating Temperature	-20 °C to +60 °C (-4 °F to +140 °F)
Relative Humidity	Up to 93%, non-condensing
Environmental Space	Low Smoke Zero Halogen (LSZH)
Safety Standard	UL 1863

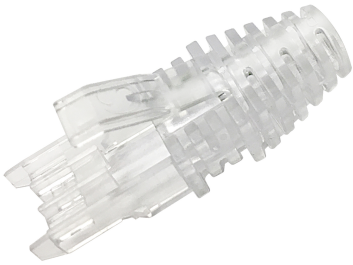
Packaging and Weights

Packaging Material	Eco-friendly, single-use plastics-free
Packaging quantity	1

Included Products

2843020-3 MP-6AU-Boot-59-1	-	Integrated Boot and Pair Manager for MP-6AU, size 59, transparent
6-2843007-1 MP-6AU-Plug-A-1	-	Modular Plug, Category 6A/6, Unshielded, Cond Insulation OD - 0.99mm, 100 pcs

2843020-3 | MP-6AU-Boot-59-1



Integrated Boot and Pair Manager for MP-6AU, size 59, transparent

Product Classification

Regional Availability	Asia Australia/New Zealand EMEA Latin America North America
Portfolio	CommScope®
Product Type	Modular plug boot

General Specifications

Boot Feature	Color-clip compatible Pull-tab compatible Slimline Snagless
Color	Clear
Compatible Plug Type	Cat 6 Cat 6A

Dimensions

Compatible Cable Diameter, maximum	6.2 mm 0.244 in
Compatible Cable Diameter, minimum	5.6 mm 0.22 in

Packaging and Weights

Included	Strain relief
Packaging quantity	100
Packaging Type	Bag Box

Regulatory Compliance/Certifications

Agency	Classification
CHINA-ROHS	Below maximum concentration value
REACH-SVHC	Compliant as per SVHC revision on www.commscope.com/ProductCompliance
ROHS	Compliant
UK-ROHS	Compliant



6-2843007-1 | MP-6AU-Plug-A-1



Modular Plug, Category 6A/6, Unshielded, Cond Insulation OD - 0.99mm, 100 pcs

Product Classification

Regional Availability

Asia | Australia/New Zealand | EMEA | Latin America | North America

Portfolio

CommScope®

Product Type

Modular plug

General Specifications

ANSI/TIA Category

6 | 6A

Cable Type

Round, unshielded

Conductor Type

Solid | Stranded

Interface

RJ45

Positions/Loaded Contacts

8/8

Termination Type

IDC

Dimensions

Compatible Insulated Conductor Diameter, maximum

1.09 mm | 0.043 in

Compatible Insulated Conductor Diameter, minimum

0.89 mm | 0.035 in

Contact Plating Thickness

1.27 µm

Compatible Conductor Gauge, solid

26–23 AWG

Compatible Conductor Gauge, stranded

26–23 AWG

Electrical Specifications

Current Rating, maximum

0.75 A

Insulation Resistance, minimum

500 mOhm

Safety Voltage Rating

150 Vac

Material Specifications

Contact Base Material

Phosphor Bronze

6-2843007-1 | MP-6AU-Plug-A-1

Contact Plating Material	Gold
Material Type	Glass filled polycarbonate

Mechanical Specifications

Plug Insertion Life, minimum	750 times
-------------------------------------	-----------

Environmental Specifications

Operating Temperature	-10 °C to +60 °C (+14 °F to +140 °F)
Relative Humidity	Up to 93%, non-condensing
Safety Standard	UL 1863

Packaging and Weights

Packaging quantity	100
Packaging Type	Bag Box Carton

Regulatory Compliance/Certifications

Agency	Classification
CHINA-ROHS	Below maximum concentration value
REACH-SVHC	Compliant as per SVHC revision on www.commscope.com/ProductCompliance
ROHS	Compliant
UK-ROHS	Compliant

