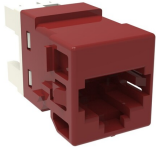


760237772 | UNJ500-RD



M-Series Modular Jack, RJ45, Cat5e Unshielded, Red

This product will be discontinued on: October 31, 2024

Replaced By:

760257302
UNJ500-RD

M-Series Modular Jack, RJ45, Cat5e Unshielded, Red

Product Classification

Regional Availability	North America
Portfolio	CommScope®
Product Type	Modular jack
Product Series	UNJ Series

General Specifications

ANSI/TIA Category	5e
Cable Type	Unshielded
Color	Red
Conductor Type	Solid Stranded
Integrated Dust Cover Type	None
Mounting	M Series faceplates and panels
Outlet Feature	Inverted jack face
Outlet Type	Standard
Termination Tool	SL Termination tool
Termination Type	IDC
Transmission Standards	ANSI/TIA-568-C.2 ISO/IEC 11801 Class D
Wiring	T568A T568B

Dimensions

Panel Thickness, recommended	1.6 mm 0.063 in
-------------------------------------	-------------------

760237772 | UNJ500-RD

Compatible Insulated Conductor Diameter, maximum	1.45 mm 0.057 in
Contact Plating Thickness	1.27 µm
Compatible Conductor Gauge, solid	24–22 AWG
Compatible Conductor Gauge, stranded	26–24 AWG

Electrical Specifications

Remote Powering	Fully supports the safe delivery of power over LAN cabling described by IEEE 802.3bt (Type 4) and complies with the unmating under electrical load requirements prescribed by IEC 60512-99-002
PoE Durability	Supports IEEE 802.3bt Type 4 (90 W) applications after 3000 plug to jack mating cycles

Material Specifications

Contact Base Material	Beryllium copper
Contact Plating Material	Gold

Mechanical Specifications

Plug to Jack Mating Cycles	Complies to IEC 60603-7 series
-----------------------------------	--------------------------------

Environmental Specifications

Flammability Rating	UL 94 V-0
----------------------------	-----------

Packaging and Weights

Packaging quantity	1
Packaging Type	Bag

Regulatory Compliance/Certifications

Agency	Classification
CHINA-ROHS	Below maximum concentration value
REACH-SVHC	Compliant as per SVHC revision on www.commscope.com/ProductCompliance
ROHS	Compliant
UK-ROHS	Compliant

