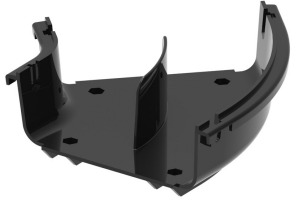


FGSB-MH4E-G



FiberGuide® 45° Horizontal Elbow, 2x6in, Black

Product Classification

Regional Availability	Asia Australia/New Zealand EMEA Latin America North America
Portfolio	CommScope®
Product Type	Elbow
Product Brand	FiberGuide®
Product Series	FGS

General Specifications

Angle/Bend Direction	45° down
Color	Black
Orientation	Horizontal
Section Type	Elbow section

Dimensions

System Dimensions	51 mm x 152 mm (2 in x 6 in)
--------------------------	------------------------------

Ordering Tree



Section Color

9	empty	yellow
	B	black

Section Size

10	A	4 x 4 in
	B	4 x 6 in
	F	4 x 12 in
	G	2 x 6 in
	H	4 x 24 in
	H-VS	4 x 24 in, variable support bracket

* Support brackets only come in black

FGSB-MH4E-G

Material Specifications

Material Type Engineering Thermoplastic

Environmental Specifications

Flammability Rating CSA S143 | UL 2024 | UL 94 V-0

Halogen Characteristics Blue Angel | TCO '99 | WEEE

Safety Standard CSA | UL

Packaging and Weights

Weight, net 0.321 kg | 0.708 lb

Regulatory Compliance/Certifications

Agency	Classification
CHINA-ROHS	Below maximum concentration value
REACH-SVHC	Compliant as per SVHC revision on www.commscope.com/ProductCompliance
ROHS	Compliant
UK-ROHS	Compliant

