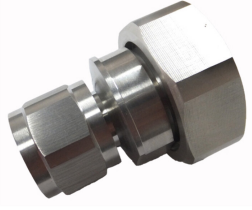


TA-NMDM



Type N Male to 7-16 DIN Male Low-PIM Adapter

Product Classification

Product Type Adapter

General Specifications

Body Style Straight
Inner Contact Plating Silver
Interface N Male
Interface 2 7-16 DIN Male
Mounting Angle Straight
Outer Contact Plating Trimetal
Pressurizable No

Dimensions

Width 34.6 mm | 1.362 in
Length 42.73 mm | 1.682 in
Diameter 34.6 mm | 1.362 in

Electrical Specifications

3rd Order IMD at Frequency -159 -dBc @ 1800 MHz
Average Power at Frequency 600.0 W @ 900 MHz
Connector Impedance 50 ohm
dc Test Voltage 2500 V
Inner Contact Resistance, maximum 1.5 mOhm
Insulation Resistance, minimum 5000 MOhm
Operating Frequency Band 0 – 6000 MHz
Outer Contact Resistance, maximum 0.4 mOhm
Peak Power, maximum 10 kW
RF Operating Voltage, maximum (vrms) 707 V

TA-NMDM

VSWR/Return Loss

Frequency Band	VSWR	Return Loss (dB)
0–3000 MHz	1.041	33.94
3000–6000 MHz	1.119	25.01

Mechanical Specifications

Coupling Nut Proof Torque	1.7 N-m 15.046 in lb
Coupling Nut Proof Torque Method	IEC 61169-16:9.3.6
Coupling Nut Retention Force	450 N 101.164 lbf
Coupling Nut Retention Force Method	IEC 61169-16:9.3.11
Insertion Force	200 N 44.962 lbf
Insertion Force Method	IEC 61169-16:9.3.5
Interface Durability	500 cycles
Interface Durability Method	IEC 61169-16:9.5 IEC 61169-4:17
Mechanical Shock Test Method	IEC 60068-2-27

Environmental Specifications

Operating Temperature	-55 °C to +85 °C (-67 °F to +185 °F)
Storage Temperature	-65 °C to +125 °C (-85 °F to +257 °F)
Attenuation, Ambient Temperature	20 °C 68 °F
Average Power, Ambient Temperature	40 °C 104 °F
Average Power, Inner Conductor Temperature	100 °C 212 °F
Climatic Sequence Test Method	IEC 60068-1
Corrosion Test Method	IEC 60068-2-11
Damp Heat Steady State Test Method	IEC 60068-2-3
Immersion Depth	1 m
Immersion Test Mating	Mated
Immersion Test Method	IEC 60529:2001, IP68
Thermal Shock Test Method	IEC 60068-2-14
Vibration Test Method	IEC 60068-2-6

Packaging and Weights

TA-NMDM

Weight, net

115.79 g | 0.255 lb

Regulatory Compliance/Certifications

Agency	Classification
CHINA-ROHS	Below maximum concentration value
ISO 9001:2015	Designed, manufactured and/or distributed under this quality management system
REACH-SVHC	Compliant as per SVHC revision on www.commscope.com/ProductCompliance
ROHS	Compliant
UK-ROHS	Compliant/Exempted



* Footnotes

Immersion Depth Immersion at specified depth for 24 hours