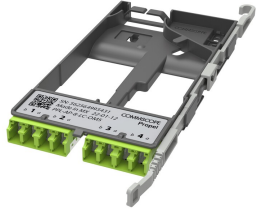


760252361 | PPL-AP-8-LC-OM5



Propel pass-through adapter pack, multimode OM5, 4 duplex LC ports

- Can be installed and removed from front or rear of panel
- QR code provides easy access to product documentation
- 8f, 12f, 16f or 24f sizes are interchangeable within Propel panels or blades
- This component requires 2 of the 12 lanes on the Propel Panel blade

Product Classification

| | |
|------------------------------|---|
| Regional Availability | Asia Australia/New Zealand EMEA Latin America North America |
| Portfolio | SYSTIMAX® |
| Product Type | Fiber adapter pack |
| Product Brand | Propel |
| Product Series | PPL |

General Specifications

| | |
|------------------------------|-------------------------------|
| Adapter Color | Lime green |
| Interface | LC/UPC |
| Interface Feature | Dust caps Internal shutters |
| Total Ports, quantity | 4 |

Dimensions

| | |
|---------------|-------------------|
| Height | 11 mm 0.433 in |
| Width | 65 mm 2.559 in |
| Depth | 170 mm 6.693 in |

Optical Specifications

| | |
|-------------------|-----------|
| Fiber Mode | Multimode |
|-------------------|-----------|

Environmental Specifications

| | |
|------------------------|---------|
| Safety Standard | c-UL-us |
|------------------------|---------|

Packaging and Weights

| | |
|---------------------------|---|
| Packaging quantity | 1 |
|---------------------------|---|

Regulatory Compliance/Certifications

| Agency | Classification |
|---------------|--|
| CHINA-ROHS | Below maximum concentration value |
| REACH-SVHC | Compliant as per SVHC revision on www.commscope.com/ProductCompliance |
| ROHS | Compliant |
| UK-ROHS | Compliant |

