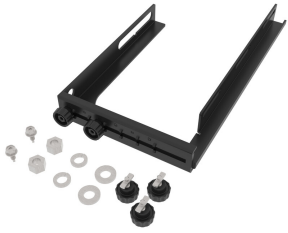


# FGS-HNTS-F-5/8-A

---



FiberGuide® Top Support Adjustable C-Bracket Kit, 5/8in for 4x12in System

## Product Classification

|                              |   |
|------------------------------|---|
| <b>Regional Availability</b> | Asia   Australia/New Zealand   EMEA   Latin America   North America |
| <b>Portfolio</b>             | CommScope®  |
| <b>Product Type</b>          | Support mounting kit  |
| <b>Product Brand</b>         | FiberGuide®   |
| <b>Product Series</b>        | FGS   |

## General Specifications

|                                  |                   |
|----------------------------------|-------------------|
| <b>Product Feature</b>           | Adjustable Height |
| <b>Color</b>                     | Black             |
| <b>Orientation</b>               | Horizontal        |
| <b>Section Type</b>              | Bracket           |
| <b>Bracket Type</b>              | C-bracket         |
| <b>Bracket Installation Type</b> | No Brackets       |
| <b>Attachment Type</b>           | Threaded rod      |

## Dimensions

|                          |                                |
|--------------------------|--------------------------------|
| <b>Height</b>            | 304.8 mm   12 in               |
| <b>Width</b>             | 41.148 mm   1.62 in            |
| <b>Length</b>            | 384.048 mm   15.12 in          |
| <b>Thread Size</b>       | 5/8 in                         |
| <b>System Dimensions</b> | 102 mm x 305 mm (4 in x 12 in) |

## Ordering Tree

# FGS-HNTS-F-5/8-A

FGS -  -  -  -  -  -  -

## For Section Size

|   |                                    |                    |
|---|------------------------------------|--------------------|
| 9 | <input type="text" value="empty"/> | 4 x 4 in, 4 x 6 in |
|   | <input type="text" value="F"/>     | 4 x 12 in          |

## For Threaded Rod Size

|    |                                      |                     |
|----|--------------------------------------|---------------------|
| 10 | <input type="text" value="1/2"/>     | 1/2 in              |
|    | <input type="text" value="1/2-LP"/>  | 1/2 in, low profile |
|    | <input type="text" value="12MM"/>    | 12 mm               |
|    | <input type="text" value="12MM-LP"/> | 12 mm, low profile  |
|    | <input type="text" value="14MM"/>    | 14 mm               |
|    | <input type="text" value="14MM-LP"/> | 14 mm, low profile  |
|    | <input type="text" value="16MM"/>    | 16 mm               |
|    | <input type="text" value="16MM-LP"/> | 16 mm, low profile  |
|    | <input type="text" value="5/8"/>     | 5/8 in              |
|    | <input type="text" value="5/8-LP"/>  | 5/8 in, low profile |

|    |                                |            |
|----|--------------------------------|------------|
| 11 | <input type="text" value="A"/> | Adjustable |
|----|--------------------------------|------------|

## Material Specifications

**Material Type** Carbon steel

## Packaging and Weights

**Included** Hardware

**Packaging quantity** 1

**Weight, net** 2.517 kg | 5.55 lb

## Regulatory Compliance/Certifications

### Agency

CHINA-ROHS

REACH-SVHC

ROHS

UK-ROHS

### Classification

Below maximum concentration value

Compliant as per SVHC revision on [www.commscope.com/ProductCompliance](https://www.commscope.com/ProductCompliance)

Compliant

Compliant

