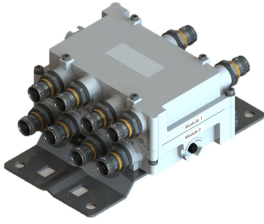


CDX1726Q-DL-43 | E14F06P72



Quad Diplexer 1350-2200/2300-2700 MHz, DC bypass on 1350-2200 ports, 4.3-10 connectors

Product Classification

Product Type Diplexer

General Specifications

Color Gray

Common Port Label COMM

Modularity 4-Quad

Mounting Pole | Wall

Mounting Pipe Hardware Band clamps (2)

RF Connector Interface 4.3-10 Female

RF Connector Interface Body Style Medium neck

Dimensions

Height 114 mm | 4.488 in

Width 167 mm | 6.575 in

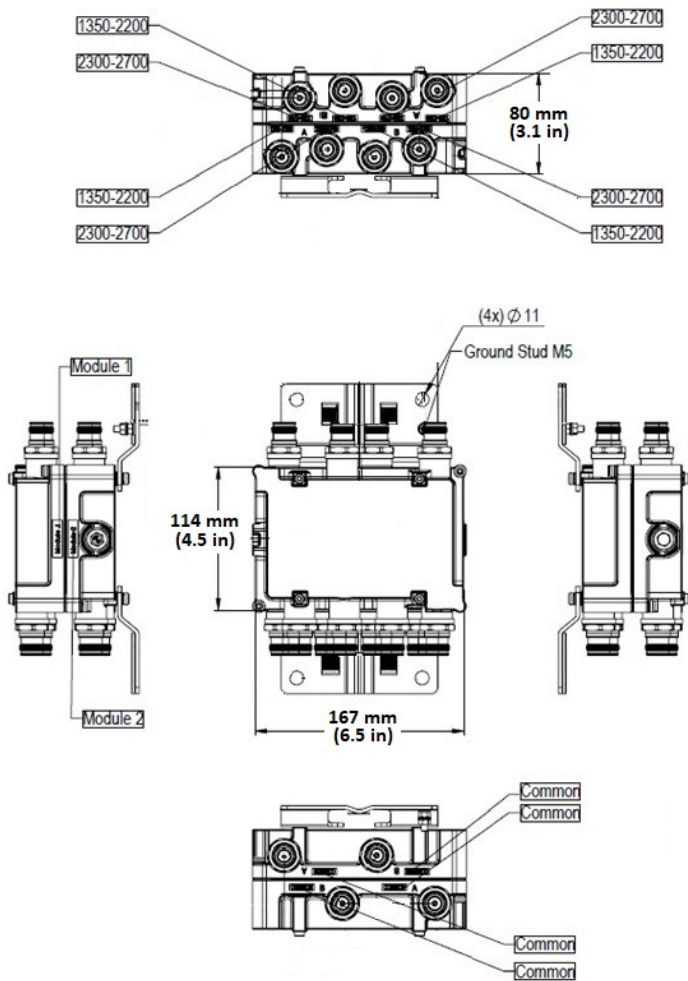
Depth 80 mm | 3.15 in

Ground Screw Diameter 5 mm | 0.197 in

Mounting Pipe Diameter Range 42.6–122 mm

Outline Drawing

CDX1726Q-DL-43 | E14F06P72



Electrical Specifications

Impedance	50 ohm
License Band, Band Pass	AWS 1700 DCS 1800 IMT 2100 IMT 2600 PCS 1900 TDD 1900 TDD 2000 TDD 2300 TDD 2600 WCS 2300

Electrical Specifications, dc Power/Alarm

dc/AISG Pass-through, combiner	Branch 1
dc/AISG Pass-through, demultiplexer	Branch 1
Lightning Surge Current	5 kA
Lightning Surge Current Waveform	8/20 waveform

Electrical Specifications

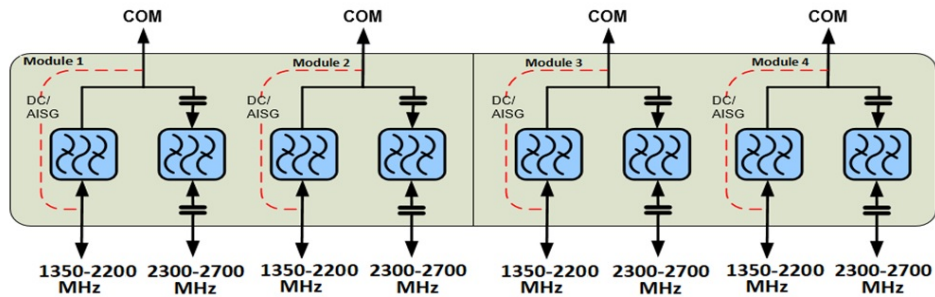
CDX1726Q-DL-43 | E14F06P72

Sub-module	1 2 3 4	1 2 3 4
Branch	4	4
Port Designation	1350-2200 MHz	2300-2700 MHz
License Band	AWS 1700, Band Pass DCS 1800, Band Pass IMT 2100, Band Pass PCS 1900, Band Pass TDD 1900, Band Pass TDD 2000, Band Pass	IMT 2600, Band Pass WCS 2300, Band Pass TDD 2300, Band Pass TDD 2600, Band Pass

Electrical Specifications, Band Pass

Frequency Range, MHz	1350–2200	2300–2700
Insertion Loss, maximum, dB	0.35	0.3
Insertion Loss, typical, dB	0.15	0.15
Total Group Delay, maximum, ns	10	15
Return Loss, minimum, dB	18	18
Isolation, minimum, dB	50	50
Input Power, RMS, maximum, W	150	150
Input Power, PEP, maximum, W	2000	2000
3rd Order PIM, typical, dBc	-161	-161
3rd Order PIM Test Method	2 x 20 W CW tones	2 x 20 W CW tones

Block Diagram



Environmental Specifications

Operating Temperature	-40 °C to +60 °C (-40 °F to +140 °F)
Relative Humidity	Up to 100%
Corrosion Test Method	IEC 60068-2-11, 30 days
Ingress Protection Test Method	IEC 60529:2001, IP67

CDX1726Q-DL-43 | E14F06P72

Packaging and Weights

Included	Mounting hardware
Volume	1.55 L
Weight, with mounting hardware	3.6 kg 7.937 lb