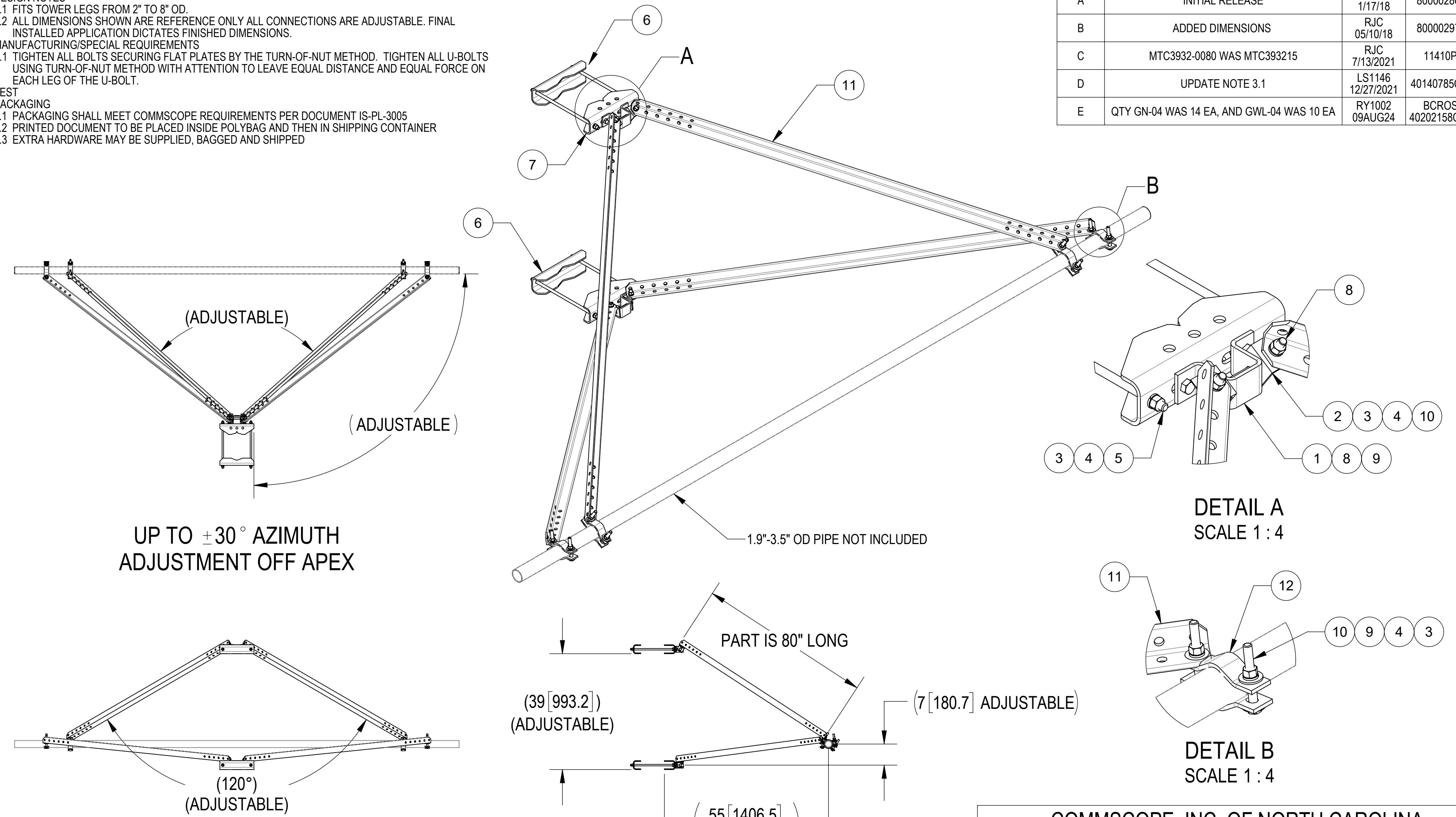


- 1.0 GENERAL NOTES
  - 1.1 ALL METRIC DIMENSIONS ARE IN BRACKETS [X.X]
  - 1.2 FOR PATENT INFO: <https://www.cs-pat.com>
- 2.0 DESIGN NOTES
  - 2.1 FITS TOWER LEGS FROM 2" TO 8" OD.
  - 2.2 ALL DIMENSIONS SHOWN ARE REFERENCE ONLY ALL CONNECTIONS ARE ADJUSTABLE. FINAL INSTALLED APPLICATION DICTATES FINISHED DIMENSIONS.
- 3.0 MANUFACTURING/SPECIAL REQUIREMENTS
  - 3.1 TIGHTEN ALL BOLTS SECURING FLAT PLATES BY THE TURN-OF-NUT METHOD. TIGHTEN ALL U-BOLTS USING TURN-OF-NUT METHOD WITH ATTENTION TO LEAVE EQUAL DISTANCE AND EQUAL FORCE ON EACH LEG OF THE U-BOLT.
- 4.0 TEST
- 5.0 PACKAGING
  - 5.1 PACKAGING SHALL MEET COMMSCOPE REQUIREMENTS PER DOCUMENT IS-PL-3005
  - 5.2 PRINTED DOCUMENT TO BE PLACED INSIDE POLYBAG AND THEN IN SHIPPING CONTAINER
  - 5.3 EXTRA HARDWARE MAY BE SUPPLIED, BAGGED AND SHIPPED

REVISIONS			
REV.	DESCRIPTION	DATE	APPROVED
A	INITIAL RELEASE	RDLS 1/17/18	8000028066
B	ADDED DIMENSIONS	RJC 05/10/18	8000029765
C	MTC3932-0080 WAS MTC393215	RJC 7/13/2021	11410PC
D	UPDATE NOTE 3.1	LS1146 12/27/2021	40140785CMO
E	QTY GN-04 WAS 14 EA, AND GWL-04 WAS 10 EA	RY1002 09AUG24	BCROSS 40202158CMO



UP TO  $\pm 30^\circ$  AZIMUTH ADJUSTMENT OFF APEX

COMPONENT PART NUMBERS PROVIDED FOR ASSEMBLY PURPOSES; INDIVIDUAL COMPONENTS MAY BE SHIPPED AS PARTS WITHIN AN INCLUDED KIT.

ITEM	PART NO.	DESCRIPTION	QTY.	WEIGHT	NOTE NO.
1	MTC393216	BRACKET, PIVOT ATTACHMENT	2	1.41 LBS	
2	MTC393211	BRACKET, PIVOT	4	0.37 LBS	
3	GN-04	1/2" GALV HEX NUT	22	0.04 LBS	
4	GWL-04	1/2" GALV LOCK WASHER	18	0.01 LBS	
5	MT37916	1/2" X 16" GALV THREADED ROD	4	0.88 LBS	
6	MTC397531	BACK BRACKET, SM-U2080LD	2	5.15 LBS	
7	MTC397532	FRONT BRACKET, SM-U2080LD	2	5.97 LBS	
8	GB-04145	1/2" X 1-1/2" GALV BOLT KIT	8	0.13 LBS	
9	GWV-04	1/2" GALV FLAT WASHER	20	0.04 LBS	
10	1204FTB	1/2" X 4" FULL THREAD GALV. BOLT	10	0.26 LBS	
11	MTC3932-0080	ANGLE, 80" SUPPORT ARM	4	20.55 LBS	
12	ACP10	1.5" - 3.5" O.D. CLAMP HALF	8	0.61 LBS	

DENSITY	195.93	lbs/in <sup>3</sup>
MASS	691.76	lbs
VOLUME	8143.77	in <sup>3</sup>
SURFACE AREA		in <sup>2</sup>
HEIGHT		
LENGTH		
WIDTH		

**COMMSCOPE, INC. OF NORTH CAROLINA**

TOLERANCES  
 0 PLACE .X[X] ± 0.25[6.4]    2 PLACE .XX[X] ± 0.06[1.5]  
 1 PLACE .X[X] ± 0.12[3.0]    ANGLES ± 2°

SAP MATERIAL MASTER  
**VSRDUALAL-TS-B**

FINISH: \_\_\_\_\_ MATERIAL: \_\_\_\_\_

NAME	DATE	TITLE
CE RJC	07/13/21	V-STABILIZER, ADJUSTABLE, DUAL, LARGE
RW RY1002	08/14/2024	
AD BCROSS	08/21/2024	
RE RY1002	09/05/2024	

SCALE: **1:12** DOCUMENT NO.: **VSRDUALAL-TS-B**

ECN 40202158CMO

SIZE	Auth Group	INSL	MODEL	DRAWING			SHEET		
<b>C</b>			VERSION	STATUS	REVISION	VERSION	STATUS	REVISION	1 OF 1
			01	RE	D	02	RE	E	