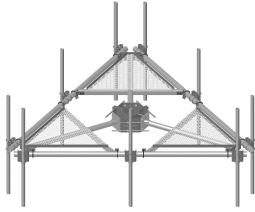


# MC-PK14L-12-72



Low-Profile Co-location Platform Kit, 14 ft face, 30 in to 60 in OD, includes pipe

## OBSOLETE

This product was discontinued on: August 18, 2022

### Replaced By:

MC-PK14M-12-96

Low-Profile Co-location Platform Kit, 14 ft face, 12 in to 50 in OD, includes pipe

## Product Classification

**Product Type** Monopole platform kit

## General Specifications

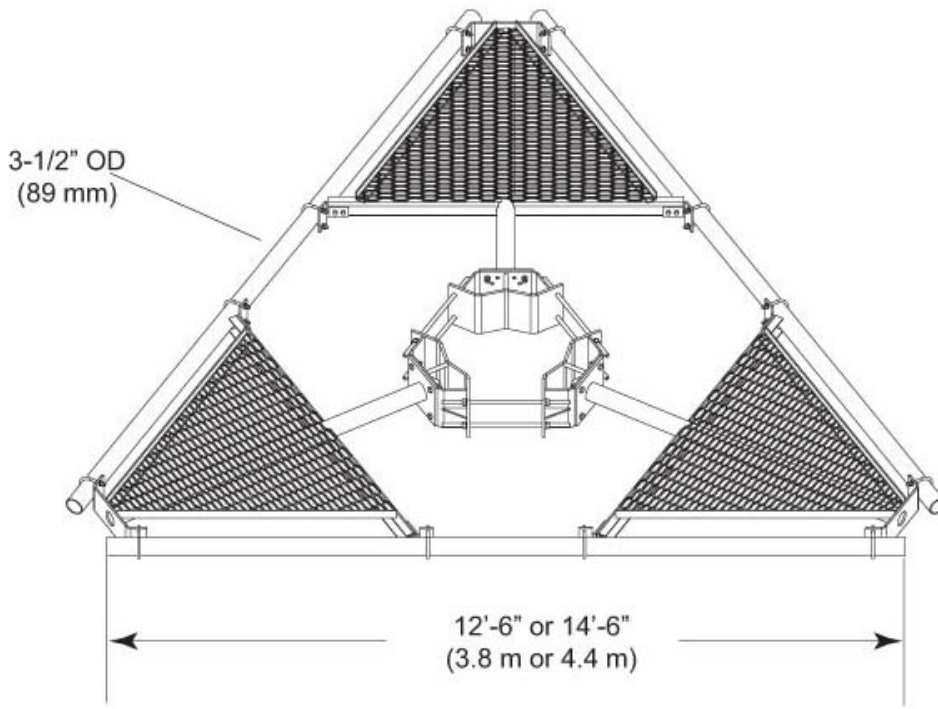
**Mounting** Monopole, 762–1524 mm (30–60 in) OD  
**Pipe, quantity** 12  
**Sectors, quantity** 3

## Dimensions

**Height** 1,828.8 mm | 72 in  
**Face Width** 4.42 m | 14.5 ft  
**Width** 4,419.6 mm | 174 in  
**Length** 914.4 mm | 36 in  
**Pipe Length** 1,828.8 mm | 72 in  
**Face Support Pipe Diameter** 88.9 mm | 3.5 in  
**Mounting Diameter, maximum** 1524 mm | 60 in  
**Mounting Diameter, minimum** 762 mm | 30 in  
**Pipe Outer Diameter** 60.325 mm | 2.375 in  
**Mounting Circumference, maximum** 4,785.36 mm | 188.4 in  
**Mounting Circumference, minimum** 2,392.68 mm | 94.2 in

# MC-PK14L-12-72

## Outline Drawing



## Material Specifications

**Material Type** Hot dip galvanized steel

## Mechanical Specifications

**Wind Rating** 120 mph (BWS) at 150 ft AGL | 140 mph (3-second gust) at 150 ft AGL using Exposure D per FBC

**Wind Rating Criteria** Four 72 in x 8 in panel antennas per sector

**Wind Rating Test Method** TIA/EIA-222

## Environmental Specifications

**EPA with 1/2 in (12 mm) radial ice** 1.217 m<sup>2</sup> | 13.1 ft<sup>2</sup>

**EPA without ice** 0.948 m<sup>2</sup> | 10.2 ft<sup>2</sup>

## Packaging and Weights

**Included** Pipe mounts | Platform | Ring mount

# MC-PK14L-12-72

---

**Packaging quantity** 1  
**Weight, net** 863.685 kg | 1,904.1 lb

## Regulatory Compliance/Certifications

Agency	Classification
ISO 9001:2015	Designed, manufactured and/or distributed under this quality management system



## Included Products

- |            |   |  |
|------------|---|--|
| MC-PK14L-B | - | Low-Profile Co-location Platform Kit, 14 ft face, 30 in to 60 in OD, pipe ordered separately |
| MT-219-H   | - | Pipe Mount Kit - 2-3/8" TO 3-1/2" PIPE - pipe not included                                   |
| MT-651     | - | Plain End Pipe, 2-3/8 in OD x 72 in .120" A500C 46Ksi  |

## \* Footnotes

<b>Wind Rating</b>	BWS—Base Wind Speed; FBC—Florida Building Code
<b>EPA with 1/2 in (12 mm) radial ice</b>	EPA—Effective Projected Area
<b>EPA without ice</b>	EPA—Effective Projected Area