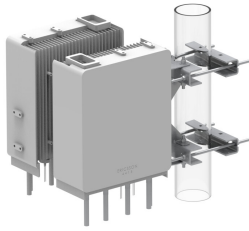


RR-FA4



RRU Mount Kit for Back-to-Back Mounting of (2) RRUs on up to 5.6" Round, 6" 60 degree or 4.5" 90 Degree Angle

Accommodates a wide variety of radios.

Features integrated lifting points for safe and efficient hoisting of radios to the mounting location

Supports all typical RRH units from Ericsson, ERS and RRUS

Product Classification

Portfolio	CommScope®
Product Type	Remote radio head unit mount
Ordering Note	CommScope® standard product with terms
Warranty	One year

General Specifications

Mounting	Round and angle legs
Radio Compatibility, Ericsson	(2) RRUS11/12/32, 2212, 4415, 4426, 4478 4426 4435 4449 4455 4460 4467 4478 4480 4490 4890 8843 8863
Tower Taper	Non-tapered Tapered

Dimensions

Height	388.62 mm 15.3 in
Width	215.9 mm 8.5 in
Length	650.24 mm 25.6 in
Mounting Diameter 2, maximum	152.4 mm 6 in
Mounting Diameter 2, minimum	38.1 mm 1.5 in
Mounting Diameter, maximum	142.24 mm 5.6 in
Mounting Diameter, minimum	60.96 mm 2.4 in

Material Specifications

Material Type	Hot dip galvanized steel
----------------------	--------------------------

RR-FA4

Packaging and Weights

Included	Clamps Hardware
Packaging quantity	1
Weight, net	21.913 kg 48.31 lb

Regulatory Compliance/Certifications

Agency	Classification
CHINA-ROHS	Above maximum concentration value
ROHS	Compliant/Exempted
UK-ROHS	Compliant/Exempted



* Footnotes

Warranty	For more information, please consult our Product Warranty guidelines
-----------------	--