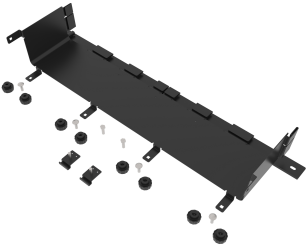


# FGS-ACC158

---



FiberGuide® to PANDUIT Solid Transition Adapter, 4x24in, Black

## Product Classification

|                              |   |
|------------------------------|---|
| <b>Regional Availability</b> | Asia   Australia/New Zealand   EMEA   Latin America   North America |
| <b>Portfolio</b>             | CommScope®  |
| <b>Product Type</b>          | Adapter   |
| <b>Product Brand</b>         | FiberGuide®   |
| <b>Product Series</b>        | FGS   |

## General Specifications

|                        |                    |
|------------------------|--------------------|
| <b>Product Feature</b> | Transition         |
| <b>Color</b>           | Black              |
| <b>Orientation</b>     | Horizontal         |
| <b>Section Type</b>    | Transition Adapter |

## Dimensions

|                          |                                |
|--------------------------|--------------------------------|
| <b>Height</b>            | 165.1 mm   6.5 in              |
| <b>Width</b>             | 215.9 mm   8.5 in              |
| <b>Length</b>            | 755.65 mm   29.75 in           |
| <b>System Dimensions</b> | 102 mm x 305 mm (4 in x 12 in) |

## Material Specifications

|                      |       |
|----------------------|-------|
| <b>Material Type</b> | Steel |
|----------------------|-------|

## Packaging and Weights

|                    |                     |
|--------------------|---------------------|
| <b>Weight, net</b> | 2.495 kg   5.501 lb |
|--------------------|---------------------|

## Regulatory Compliance/Certifications

| <b>Agency</b> | <b>Classification</b> |
|---------------|-----------------------|
|---------------|-----------------------|

# FGS-ACC158

---

|            |  |
|------------|--|
| CHINA-ROHS | Below maximum concentration value  |
| REACH-SVHC | Compliant as per SVHC revision on <a href="http://www.commscope.com/ProductCompliance">www.commscope.com/ProductCompliance</a> |
| ROHS       | Compliant  |
| UK-ROHS    | Compliant  |

