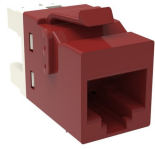


2291217-RD



KJ-Series Modular Jack, RJ45, Cat5e Unshielded, Red

Product Classification

Regional Availability

Asia | Australia/New Zealand | EMEA | Latin America | North America

Portfolio

CommScope®

Product Type

Modular jack

Product Series

KJ Series

General Specifications

ANSI/TIA Category

5e

Cable Type

Unshielded

Color

Red

Conductor Type

Solid | Stranded

Integrated Dust Cover Type

None

Mounting

Hubbell® faceplates | Leviton® faceplates | Panduit® faceplates

Mounting Note

Color matches with KJ-style Red Faceplates

Outlet Type

Keystone

Termination Tool

110 Punchdown tool | SL Termination tool

Termination Type

IDC

Transmission Standards

ANSI/TIA-568-C.2 | ISO/IEC 11801 Class D

Wiring

T568A | T568B

Dimensions

Panel Cutout, recommended

14.79 x 19.31 mm (0.58 x 0.76 in)

Panel Thickness, recommended

1.6 mm | 0.063 in

Height

16.13 mm | 0.635 in

Width

16.48 mm | 0.649 in

Depth

30.48 mm | 1.2 in

2291217-RD

Compatible Insulated Conductor Diameter, maximum	1.27 mm 0.05 in
Contact Plating Thickness	1.27 µm
Compatible Conductor Gauge, solid	24–22 AWG
Compatible Conductor Gauge, stranded	26–24 AWG

Electrical Specifications

Remote Powering	Fully supports the safe delivery of power over LAN cabling described by IEEE 802.3bt (Type 4) and complies with the unmating under electrical load requirements prescribed by IEC 60512-99-002
PoE Durability	Supports IEEE 802.3bt Type 4 (90 W) applications greater than 3000 plug to jack mating cycles

Material Specifications

Contact Base Material	Beryllium copper
Contact Plating Material	Gold
Material Type	PC+ABS

Mechanical Specifications

Plug to Jack Mating Cycles	Complies to IEC 60603-7 series
-----------------------------------	--------------------------------

Environmental Specifications

Flammability Rating	UL 94 V-0
----------------------------	-----------

Packaging and Weights

Packaging quantity	1
Packaging Type	Bag

Regulatory Compliance/Certifications

Agency	Classification
CHINA-ROHS	Below maximum concentration value
REACH-SVHC	Compliant as per SVHC revision on www.commscope.com/ProductCompliance
ROHS	Compliant
UK-ROHS	Compliant

